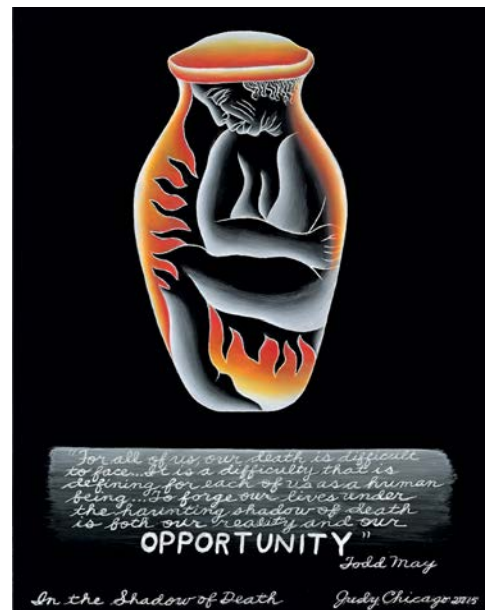
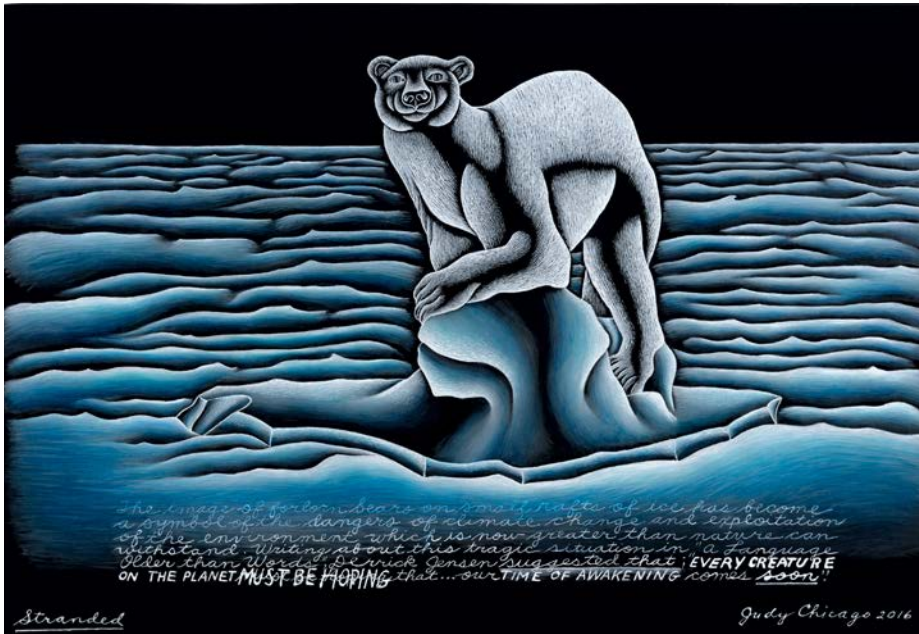
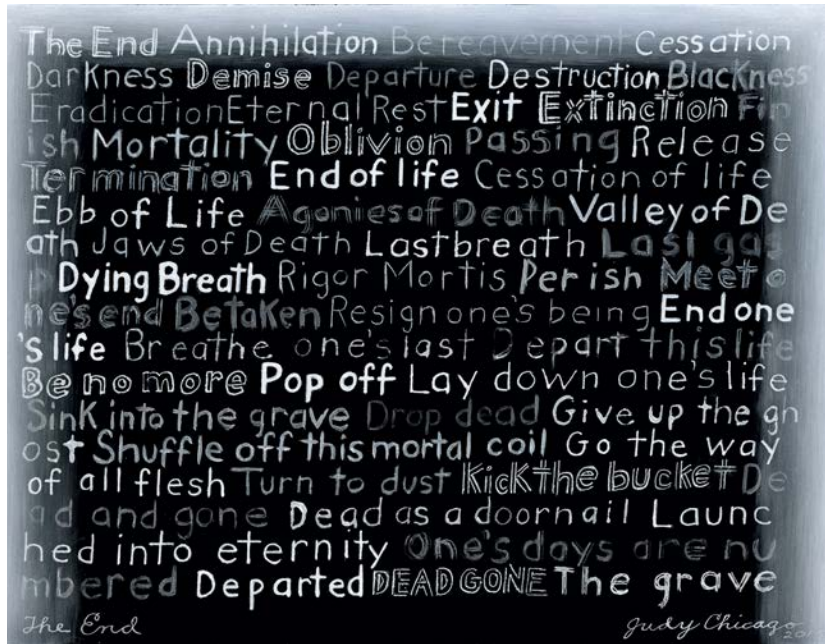
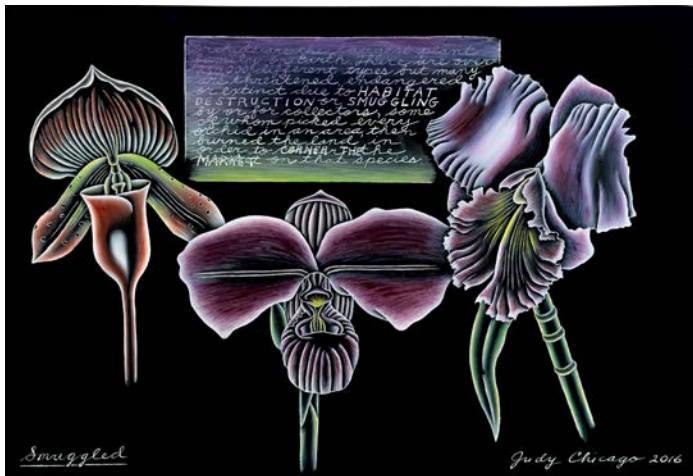
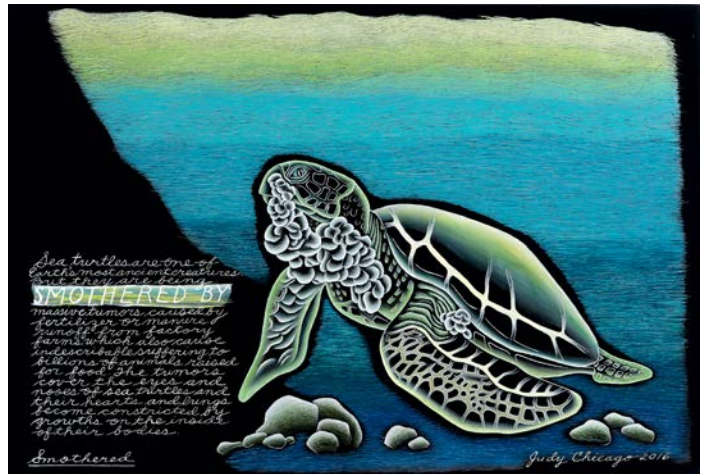


Press Images

Judy Chicago—*The End: A Meditation on Death and Extinction*
National Museum of Women in the Arts | Sept. 19, 2019–Jan. 20, 2020







Conditions for reproduction:

- Images may not be cropped or bled off the page;
- No text may appear over the images;
- Images must be published with required caption directly under the reproduction, or on the page facing the reproduction;
- All reproductions must be printed in full-tone black and white or full color; and
- Reproductions of a specific detail require advance approval and must be properly noted.

Media Contact:

Amy Mannarino, (202) 783-7373, amannarino@nmwa.org



Judy Chicago, *Stranded*, from *The End: A Meditation on Death and Extinction*, 2016; Kiln-fired glass paint on black glass, 12 x 18 in.; Courtesy of the artist; Salon 94, New York; and Jessica Silverman Gallery, San Francisco; © Judy Chicago/Artists Rights Society (ARS), New York; Photo © Donald Woodman/ARS, NY



Judy Chicago, *Mortality Relief*, from *The End: A Meditation on Death and Extinction*, 2018; Patinated bronze, 36 x 20 x 7 1/2 in.; Courtesy of the artist; Salon 94, New York; and Jessica Silverman Gallery, San Francisco; © Judy Chicago/Artists Rights Society (ARS), New York; Photo © Donald Woodman/ARS, NY



Judy Chicago, *Stages of Dying 5/6: Depression*, from *The End: A Meditation on Death and Extinction*, 2015; China paint on porcelain, 12 x 16 in.; Courtesy of the artist; Salon 94, New York; and Jessica Silverman Gallery, San Francisco; © Judy Chicago/Artists Rights Society (ARS), New York; Photo © Donald Woodman/ARS, NY



Judy Chicago, *In the Shadow of Death*, from *The End: A Meditation on Death and Extinction*, 2015; Kiln-fired glass paint on black glass, 12 x 9 in.; Courtesy of the artist; Salon 94, New York; and Jessica Silverman Gallery, San Francisco; © Judy Chicago/Artists Rights Society (ARS), New York; Photo © Donald Woodman/ARS, NY



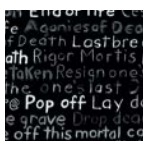
Judy Chicago, *Stages of Dying 6/6: Acceptance*, from *The End: A Meditation on Death and Extinction*, 2015; China paint on porcelain, 16 x 12 in.; Courtesy of the artist; Salon 94, New York; and Jessica Silverman Gallery, San Francisco; © Judy Chicago/Artists Rights Society (ARS), New York; Photo © Donald Woodman/ARS, NY



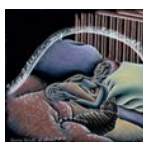
Judy Chicago, *Title Panel: The End: A Meditation on Death and Extinction*, 2015; China paint, pen work, and luster on porcelain, 12 x 16 in.; Courtesy of the artist; Salon 94, New York; and Jessica Silverman Gallery, San Francisco; © Judy Chicago/Artists Rights Society (ARS), New York; Photo © Donald Woodman/ARS, NY



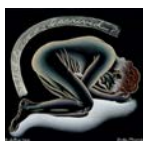
Judy Chicago, *How Will I Die? #8*, from *The End: A Meditation on Death and Extinction*, 2015; Kiln-fired glass paint on black glass, 9 x 12 in.; Courtesy of the artist; Salon 94, New York; and Jessica Silverman Gallery, San Francisco; © Judy Chicago/Artists Rights Society (ARS), New York; Photo © Donald Woodman/ARS, NY



Judy Chicago, *Title Panel: Mortality*, from *The End: A Meditation on Death and Extinction*, 2015; Kiln-fired glass paint on black glass, 9 x 12 in.; Courtesy of the artist; Salon 94, New York; and Jessica Silverman Gallery, San Francisco; © Judy Chicago/Artists Rights Society (ARS), New York; Photo © Donald Woodman/ARS, NY



Judy Chicago, *How Will I Die? #9*, from *The End: A Meditation on Death and Extinction*, 2015; Kiln-fired glass paint, Liquid Bright, and oil paint on black glass, 9 x 12 in.; Courtesy of the artist; Salon 94, New York; and Jessica Silverman Gallery, San Francisco; © Judy Chicago/Artists Rights Society (ARS), New York; Photo © Donald Woodman/ARS, NY



Judy Chicago, *How Will I Die? #2*, from *The End: A Meditation on Death and Extinction*, 2015; Kiln-fired glass paint on black glass, 9 x 12 in.; Courtesy of the artist; Salon 94, New York; and Jessica Silverman Gallery, San Francisco; © Judy Chicago/Artists Rights Society (ARS), New York; Photo © Donald Woodman/ARS, NY



Judy Chicago, *Collected*, from *The End: A Meditation on Death and Extinction*, 2015–16; Kiln-fired glass paint on black glass, 12 x 18 in.; Courtesy of the artist; Salon 94, New York; and Jessica Silverman Gallery, San Francisco; © Judy Chicago/Artists Rights Society (ARS), New York; Photo © Donald Woodman/ARS, NY



Judy Chicago, *Smothered*, from *The End: A Meditation on Death and Extinction*, 2016; Kiln-fired glass paint on black glass, 12 x 18 in.; Courtesy of the artist; Salon 94, New York; and Jessica Silverman Gallery, San Francisco; © Judy Chicago/Artists Rights Society (ARS), New York; Photo © Donald Woodman/ARS, NY



Judy Chicago, *Smuggled*, from *The End: A Meditation on Death and Extinction*, 2016; Kiln-fired glass paint on black glass, 12 x 18 in.; Courtesy of the artist; Salon 94, New York; and Jessica Silverman Gallery, San Francisco; © Judy Chicago/Artists Rights Society (ARS), New York; Photo © Donald Woodman/ARS, NY



Judy Chicago, *Bleached*, from *The End: A Meditation on Death and Extinction*, 2017; Kiln-fired glass paint on black glass, 12 x 18 in.; Courtesy of the artist; Salon 94, New York; and Jessica Silverman Gallery, San Francisco; © Judy Chicago/Artists Rights Society (ARS), New York; Photo © Donald Woodman/ARS, NY