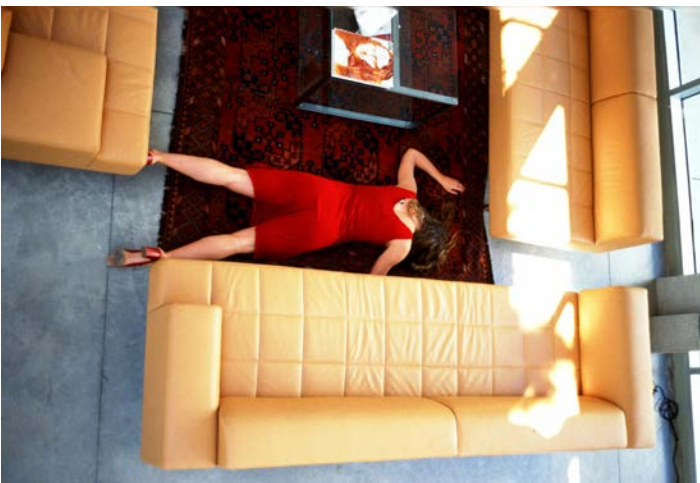


Press Images

Live Dangerously

National Museum of Women in the Arts | Sept. 19, 2019–Jan. 20, 2020







Conditions for reproduction:

- Images may not be cropped or bled off the page;
- No text may appear over the images;
- Images must be published with required caption directly under the reproduction, or on the page facing the reproduction;
- All reproductions must be printed in full-tone black and white or full color; and
- Reproductions of a specific detail require advance approval and must be properly noted.

Media Contact:

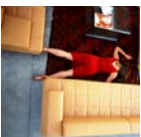
Amy Mannarino, (202) 783-7373, amannarino@nmwa.org



Janaina Tschäpe, *Frick Park*, from the series "100 Little Deaths," 2000; Chromogenic color print, 31 x 47 in.; National Museum of Women in the Arts, Gift of Heather and Tony Podesta Collection; © Janaina Tschäpe; Image courtesy of Janaina Tschäpe studio



Janaina Tschäpe, *Weimar*, from the series "100 Little Deaths," 1998; Chromogenic color print, 31 x 47 in.; National Museum of Women in the Arts, Gift of Heather and Tony Podesta Collection; © Janaina Tschäpe; Image courtesy of Janaina Tschäpe studio



Janaina Tschäpe, *Living Room*, from the series "100 Little Deaths," 2002; Chromogenic color print, 31 x 47 in.; National Museum of Women in the Arts, Gift of Heather and Tony Podesta Collection; © Janaina Tschäpe; Image courtesy of Janaina Tschäpe studio



Janaina Tschäpe, *Moais*, from the series "100 Little Deaths," 2002; Chromogenic color print, 31 x 47 in.; National Museum of Women in the Arts, Gift of Heather and Tony Podesta Collection; © Janaina Tschäpe; Image courtesy of Janaina Tschäpe studio



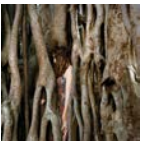
Janaina Tschäpe, *Fiji*, from the series "100 Little Deaths," 2002; Chromogenic color print, 31 x 47 in.; National Museum of Women in the Arts, Gift of Heather and Tony Podesta Collection; © Janaina Tschäpe; Image courtesy of Janaina Tschäpe studio



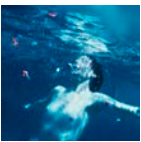
Janaina Tschäpe, *Angervat*, from the series "100 Little Deaths," 2002; Chromogenic color print, 31 x 47 in.; National Museum of Women in the Arts, Gift of Heather and Tony Podesta Collection; © Janaina Tschäpe; Image courtesy of Janaina Tschäpe studio



Ana Mendieta, *Volcán*, 1979; Six chromogenic color prints, each 13 1/4 x 20 in.; National Museum of Women in the Arts, Promised Gift of Steven Scott, Baltimore, in memory of Hollis Sigler; © The Estate of Ana Mendieta Collection, LLC; Courtesy of Galerie Lelong, New York



Rania Matar, *Yara, Cairo, Egypt*, 2019; Archival pigment print, 44 x 37 in.; Courtesy of the artist and Robert Klein Gallery; © Rania Matar



Laurie Simmons, *Water Ballet (Vertical)*, 1981; Chromogenic print, 20 x 16 in.; National Museum of Women in the Arts, Gift of Heather and Tony Podesta Collection; © 2019 Laurie Simmons



Justine Kurland, *Jungle Gym*, 2001; Chromogenic color print, 30 x 40 in.; National Museum of Women in the Arts, Gift of Heather and Tony Podesta Collection; © Justine Kurland; Image courtesy of the artist and Mitchell-Innes & Nash, New York



Justine Kurland, *Slumber Party*, 2000; Chromogenic color print, 30 x 40 in.; National Museum of Women in the Arts, Gift of Heather and Tony Podesta Collection; © Justine Kurland; Image courtesy of the artist and Mitchell-Innes & Nash, New York



Graciela Iturbide, *Mujer Ángel, Desierto de Sonora (Angel Woman, Sonoran Desert)*, 1979 (printed 2014); Gelatin silver print, 16 x 20 in.; National Museum of Women in the Arts, Gift of Cindy Jones; © Graciela Iturbide; Image courtesy of Throckmorton Fine Art, New York



Louise Dahl-Wolfe, *California Desert*, 1948; Gelatin silver print, 14 x 11 in.; National Museum of Women in the Arts, Gift of Helen Cumming Ziegler; © 1989 Center for Creative Photography, Arizona Board of Regents