



NATIONAL MUSEUM  
*of WOMEN in the ARTS*

---

1250 NEW YORK AVENUE, NW  
WASHINGTON, DC 20005-3970  
TEL·202 783 5000  
FAX·202 393 3234  
WWW.NMWA.ORG

**FOR IMMEDIATE RELEASE**

January 9, 2017

**Media Contacts:**

Stacy Meteer, (202) 783-7377

[smeteer@nmwa.org](mailto:smeteer@nmwa.org)

Amy Mannarino, (202) 783-7373

[amannarino@nmwa.org](mailto:amannarino@nmwa.org)

*National Museum of Women in the Arts Presents Violinist Catherine Manoukian, Feb. 8  
as part of Shenson Chamber Music Concerts*

WASHINGTON—The National Museum of Women in the Arts ([NMWA](http://www.nmwa.org)) presents a line-up of acclaimed performers as part of the annual [Shenson Chamber Music Concerts](#) under the artistic direction of Gilan Tocco Corn. Through these concerts, the museum carries out its mission of recognizing and supporting women in all areas of the arts. Women musicians performing in the museum's free concert series have been impressing audiences for 19 years. The series was named in honor of Drs. Ben and A. Jess Shenson, who were longtime supporters of the museum and lovers of music.

Join NMWA in welcoming Armenian violinist Catherine Manoukian accompanied by pianist Leonie Rettig on Wednesday, February 8, 7:30–9:30 p.m., for a program featuring selections from Beethoven, Brahms and Franck.

Catherine Manoukian began violin studies with her father Heratch Manoukian—a renowned Armenian violinist—and made her first stage appearance at the age of four. She has been performing professionally since the age of 12, when she made her orchestral debut with the Vancouver Symphony. From 1994 to 2000, Catherine studied with the late violin pedagogue Dorothy DeLay in New York City.



Praised for her innate musicality and imaginative artistry on orchestral, chamber music and recital stages, Manoukian's impressive accomplishments include guest performances with many major North American and international orchestras, such as the Toronto Symphony, the Boston Pops, the Calgary and Fresno Philharmonics, and the Manitoba Chamber and CBC Radio Orchestras, as well as the Tokyo Philharmonic, Osaka Century Orchestra, the Armenian Philharmonic, the Helsingborg Symphony, the Norrköping Symphony, the Turku Philharmonic Orchestra, the Staatskapelle Weimar and the Duisburg Philharmoniker. As a recitalist, she has appeared on major stages in New York, Boston, Los Angeles, Toronto, Paris, Tokyo and Osaka, and as a chamber musician at the Aspen, Caramoor and Newport International festivals. She has collaborated with such esteemed conductors as Mario Bernardi, Jukka-Pekka Saraste, Keith Lockhart, Roy Goodman, Peter Oundjian and Stefan Solyom.

Manoukian maintains an extensive discography. Recent releases include a live performance of the Elgar Violin Concerto, with the Staatskapelle Weimar and Stefan Solyom (2013), and the Brahms Sonatas with Gunilla Süßmann (2014), both on the Berlin Classics label. She most recently recorded the Brahms Violin and Double Concertos with the Helsingborg Symphony and with cellist Jakob Koranyi, with an anticipated release date of early 2017.

**CATHERINE MANOUKIAN, violin**

**LEONIE RETTIG, piano**

**Sonata for Violin and Piano in C Minor**

Ludwig van Beethoven

*Allegro con brio*

*Adagio cantabile*

*Scherzo. Allegro – Trio*

*Finale. Allegro*

**Sonata for Violin and Piano in D Minor**

Johannes Brahms

*Allegro*

*Adagio*

*Un poco presto e con sentimento*

*Presto agitato*

**Sonata for Violin and Piano in A Major**

César Franck

*Allegretto ben moderato*

*Allegro*

*Recitativo-Fantasia: Ben moderato*

*Allegretto poco mosso*

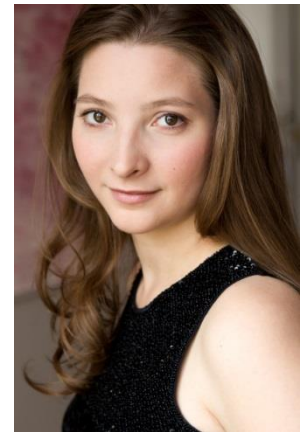
Over the years, the series has welcomed emerging and established artists, including the Ahn Trio, Sara Daneshpour, Sara Davis Buechner, Simone Dinnerstein, the Eroica Trio, Ingrid Fliter, Sharon Isbin, Olga Kern, Valentina Lisitsa, Anne Akiko Meyers, Mary Millben and Eugenia Zukerman.

**All Shenson Chamber Music Concerts are FREE with reservations. Please note, space is limited. Seating is first-come, first-served.** Visit [nmwa.org/shenson](http://nmwa.org/shenson) to register. NMWA is located at 1250 New York Avenue, NW, Washington, D.C. 20005—two blocks north of Metro Center. NMWA has partnered with Parking Panda, the nationwide leader in online parking reservations, to allow visitors to purchase guaranteed parking in advance at nearby parking garages. Visit <https://www.parkingpanda.com/national-museum-of-women-in-the-arts-parking>.

*The Shenson Chamber Music Concert Series is made possible by support from Fred M. Levin and Nancy Livingston and The Shenson Foundation in memory of Drs. Ben and A. Jess Shenson.*

### **Leonie Rettig, piano**

Rettig made her orchestral debut at the age of fourteen, playing Edvard Grieg's Piano Concerto. She holds second prize from the Nikolai Rubinstein competition in Paris (2003) as well as several awards from the IBLA Grand Prize in Sicily. As a soloist, Rettig has appeared with Symphony Nova Scotia under the baton of Bernhard Gueller, the Nuremberg Symphony Orchestra under Lancelot Fuhry and the Landeskappelle Eisenach under Carlos Chamorro Moreno. She has also appeared extensively in both recital and as a chamber musician, and she plays regularly in Germany, Austria, Portugal, South Africa, Ukraine and Switzerland.



### **National Museum of Women in the Arts**

The National Museum of Women in the Arts (NMWA) is the world's only major museum solely dedicated to celebrating the creative contributions of women. The museum champions women through the arts by collecting, exhibiting, researching and creating programs that advocate for equity and shine a light on excellence. NMWA highlights remarkable women artists of the past while also promoting the best women artists working today. The museum's collection includes over 5,000 works by more than

1,000 women artists from the 16th century to the present, including Mary Cassatt, Frida Kahlo, Alma Thomas, Lee Krasner, Louise Bourgeois, Chakaia Booker and Nan Goldin.

NMWA is located at 1250 New York Avenue, NW, Washington, D.C., in a landmark building near the White House. It is open Monday–Saturday, 10 a.m.–5 p.m. and Sunday, noon–5 p.m. For information, call 202-783-5000 or visit [nmwa.org](http://nmwa.org). Admission is \$10 for adults, \$8 for visitors 65 and over and students, and free for NMWA members and youths 18 and under. Free Community Days take place on the first Sunday of each month. For more information about NMWA, visit [nmwa.org](http://nmwa.org), [Broad Strokes Blog](#), [Facebook](#), [Twitter](#) or [Instagram](#).

###

**Photo credit:**

Photo by Tony Briggs

Photo © Christine Schneider