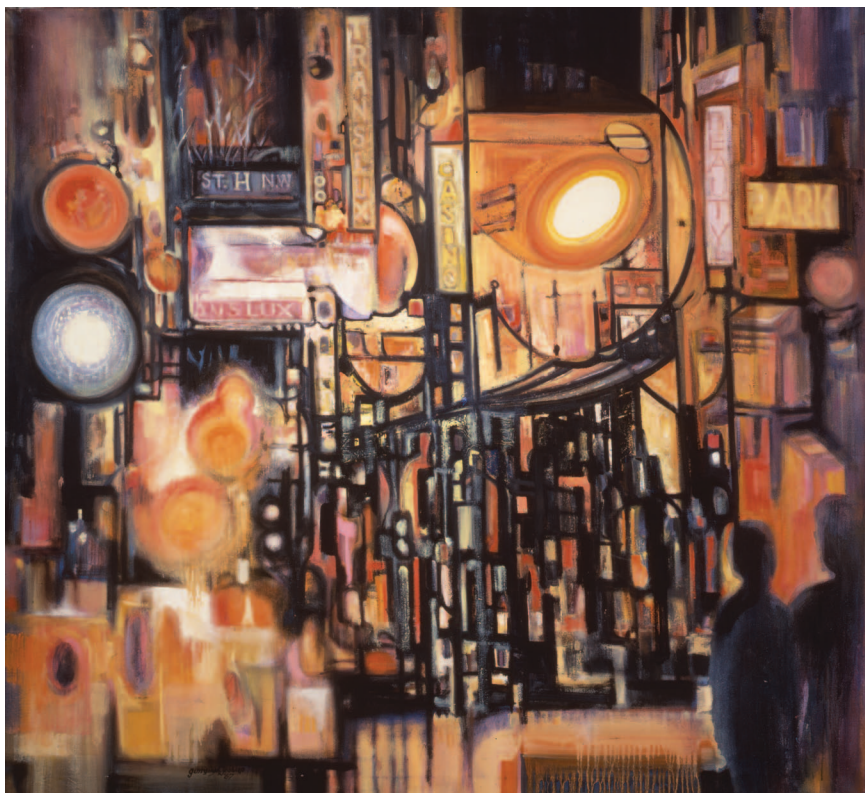


## Rainy Night, Downtown



### Bright Lights, Big City

Georgia Mills Jessup said *Rainy Night Downtown* could represent a night scene in any U.S. city. Yet, the signs for the “Trans-Lux Theater” and “St. H N.W.” identify the location as Washington, D.C., the artist’s hometown.



## Rainy Night, Downtown, 1967

### Take a closer look

**Georgia Mills Jessup (1926–2016)** used abstraction, vivid colors, and dramatic contrasts of light and shadow to create a particular mood and energy in this scene. Her approach encourages us to imagine the sights and sounds that would greet us if we stepped through the frame.

### Something to talk about

The Trans-Lux Theatre, one of the landmarks featured in Jessup’s painting, was located on the west side of 14th Street, NW, between New York Avenue and H Street, from 1937 to 1975. That means the scene depicted was about a block from where you are standing.

### Who knew?

Jessup, who described herself as a “melting pot,” was particularly proud of her American Indian heritage. As a descendent the Pamunkey tribe of Virginia the great Powhatan is her ancestral chief.

Georgia Mills Jessup, *Rainy Night, Downtown*, 1967; Oil on canvas; 44 x 48 inches; National Museum of Women in the Arts, Gift of Savanna M. Clark; © Georgia Mills Jessup, artist

