



Contemporary artist Janaina Tschäpe speaks with visitors;  
Photo by Laura Hoffman, NMWA

## MUSEUM

The National Museum of Women in the Arts is the only major museum in the world solely dedicated to championing women through the arts. With its collections, exhibitions, programs, and online content, the museum seeks to inspire dynamic exchanges about art and ideas. NMWA advocates for better representation of women artists and serves as a vital center for thought leadership, community engagement, and social change.

## BUILDING

The museum is located in a 1908 Classical Revival style building that was constructed as a temple for the Masons, an organization that did not allow women members. Masonic symbols can still be seen on the exterior. In 1983, the museum's founders purchased the building and, after extensive renovations, opened to the public on April 7, 1987, as the National Museum of Women in the Arts.

CHAMPION  
WOMEN  
THROUGH  
THE  
ARTS

## INFORMATION

**WEBSITE** [nmwa.org](http://nmwa.org)

**PHONE** 800-222-7270, 202-783-5000

**HOURS** Mon.–Sat., 10 a.m.–5 p.m.; Sun., noon–5 p.m.;  
Closed Thanksgiving Day, Christmas Day, New Year's Day

**ADMISSION** NMWA Members free, Adults \$10,  
Seniors 65 and over \$8, Students \$8, 18 and under free.  
Free Community Days are on the first Sunday of each month.

**MUSEUM SHOP** Open during museum hours;  
202-783-7994

**MEZZANINE CAFÉ** Mon.–Fri., 11 a.m.–2 p.m.

**LIBRARY & RESEARCH CENTER**

Mon.–Fri., 10 a.m.–noon and 1–5 p.m.; 202-266-2835

**GROUP TOURS** [nmwa.org/visit/book-tour](http://nmwa.org/visit/book-tour);  
[reservations@nmwa.org](mailto:reservations@nmwa.org)

**PUBLIC PROGRAMS** [freshtalk@nmwa.org](mailto:freshtalk@nmwa.org)

**FACILITY RENTAL** 202-783-7367

**MEMBERSHIP** 866-875-4627; [member@nmwa.org](mailto:member@nmwa.org)

**BLOG** [nmwa.org/blog](http://nmwa.org/blog)

   @WomenInTheArts

National Museum of Women in the Arts  
1250 New York Avenue, NW  
Washington, DC 20005-3970

Cover: Alma Woodsey Thomas, *Iris, Tulips, Jonquils, and Crocuses*, 1969; Gift of Wallace and Wilhelmina Holladay; © Estate of Alma Woodsey Thomas; Photo by Lee Stalworth



Photo by Kevin Allen



## MUSEUM MAP AND INFORMATION

NATIONAL  
MUSEUM  
OF WOMEN  
IN THE ARTS



# CHAMPION WOMEN THROUGH THE ARTS



Photo by Tom Field

## FIFTH FLOOR

Performance Hall  
(Open for scheduled programs)

## FOURTH FLOOR

Open M–F

Betty Boyd Dettre Library &  
Research Center, Eulabee Dix Gallery

## THIRD FLOOR

Collection Highlights

## SECOND FLOOR

Special Exhibition Galleries

## MEZZANINE

Collection Highlights,  
Mezzanine Café

## GROUND FLOOR

Collection Highlights,  
Teresa Lozano Long Gallery,  
Information Desk, Museum Shop

## COLLECTIONS

Explore the museum's collections, which highlight connections between historical and contemporary works of art. The galleries delve into topics explored by women artists through time and around the world.

## EXPLORE THE THEMES

[Herstory](#) | [Domestic Affairs](#) | [Body Language](#)  
[Natural Women](#) | [Construction Zone](#)

Restrooms are located in the Great Hall, Mezzanine, and near the passenger elevators on floors 2–5.

The accessible elevator is located behind the security desk.

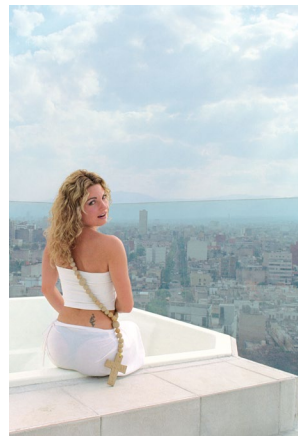
## HIGHLIGHTS



Amy Sherald, *It Made Sense ... Mostly In Her Mind*, 2011; Promised Gift of Steven Scott, Baltimore, in Honor of the Artist and the 25th Anniversary of the National Museum of Women in the Arts; © Amy Sherald



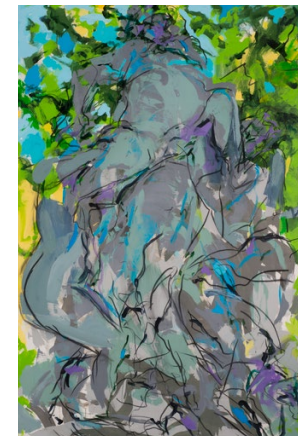
Clara Peeters, *A Still Life of Lilies, Roses, Iris, Pansies, Columbine, Love-in-a-Mist, Larkspur, and Other Flowers in a Glass Vase on a Table Top, Flanked by a Rose and a Carnation*, 1610; Gift of Wallace and Wilhelmina Holladay



Daniela Rossell, *Michelle Jacuzzi—Untitled (#7)* (detail) from the series "Ricas y Famosas," 1999; Gift of the Heather and Tony Podesta Collection, Washington, D.C.; © Daniela Rossell; Courtesy of the artist and Greene Naftali, New York



Sarah Bernhardt, *Après la tempête* (*After the Storm*), ca. 1876; Gift of Wallace and Wilhelmina Holladay



Elaine de Kooning, *Bacchus #3*, 1978; Gift of Wallace and Wilhelmina Holladay; © Elaine de Kooning



Élisabeth Louise Vigée-LeBrun, *Portrait of Princess Belozersky*, 1798; Gift of Rita M. Cushman in memory of George A. Rentschler