

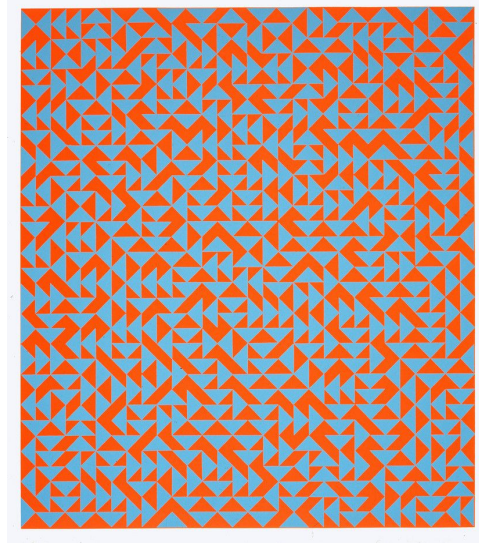
# National Museum of Women in the Arts Coloring Book



## Featured Artworks



Alison Saar, *Washtub Blues*, 2000; Woodcut on paper, 30 3/8 x 22 1/2 in.; National Museum of Women in the Arts, Gift of the Harry and Lea Gudelsky Foundation, Inc.; © Alison Saar



Anni Albers, *Untitled*, 1969; Serigraph on paper, 24 x 22 1/2 in.; National Museum of Women in the Arts, Gift of Wallace and Wilhelmina Holladay; © Anni Albers



Loïs Mailou Jones, *Arreau, Hautes-Pyrénées*, 1949; Oil on canvas, 19 1/2 x 23 5/8 in.; National Museum of Women in the Arts, Gift of Gladys P. Payne; © Loïs Mailou Jones; Photo by Lee Stalsworth



Polly Apfelbaum, *Night Flowering*, 2009; Woodblock print on handmade paper, 15 x 15 in.; Gift of Steven Scott, Baltimore, in Honor of National Museum of Women in the Arts Chief Curator Kathryn A. Wat and the 25th Anniversary of NMWA; Photo by Lee Stalsworth; © Polly Apfelbaum





Amy Lamb, *Vase of Flowers I*, 1999 (printed 2011); pigment print, 35 x 35 in.; National Museum of Women in the Arts, Gift of the artist and Steven Scott Gallery, Baltimore, in honor of the 25th Anniversary of the National Museum of Women in the Arts; © 1999 Amy Lamb, all rights reserved



Beatriz Milhazes, *Bibi*, 2003; Screen print, 22 1/2 x 22 1/2 in.; National Museum of Women in the Arts, Gift of Heather and Tony Podesta Collection; © Beatriz Milhazes



Maria Sibylla Merian, *Plate 12* (from "Dissertation in Insect Generations and Metamorphosis in Surinam", second edition), 1719; Hand-colored engraving on paper, 20 1/2 x 14 1/2 in.; National Museum of Women in the Arts, Gift of Wallace and Wilhelmina Holladay



Maria Sibylla Merian, *Plate 55* (from "Dissertation in Insect Generations and Metamorphosis in Surinam", second edition), 1719; Hand-colored engraving on paper, 20 1/2 x 14 1/2 in.; National Museum of Women in the Arts, Gift of Wallace and Wilhelmina Holladay



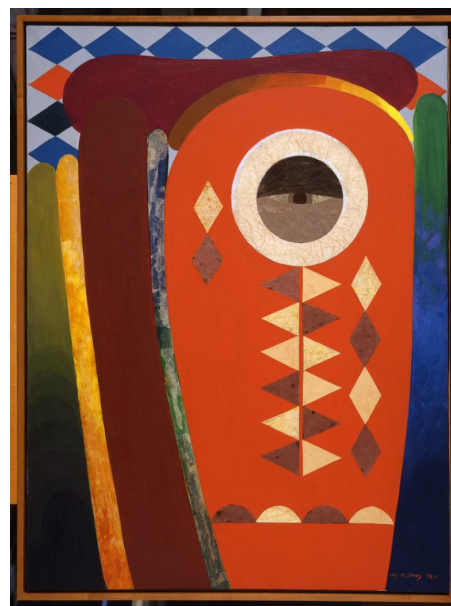
Marina Abramović, *The Hero*, 2001; Chromogenic color print, 49 1/2 x 49 1/2 in.; National Museum of Women in the Arts, Gift of Heather and Tony Podesta Collection; © Marina Abramović, Courtesy the Marina Abramović Archives



Judy Chicago, *Marie Antoinette* from "The Great Ladies Series", 1973/2016; Four color stone lithograph on cotton paper, 25 x 25 in.; National Museum of Women in the Arts, Museum purchase: Members' Acquisition Fund; Courtesy the artist and Art+Culture Projects, New York; © Judy Chicago/Artists Rights Society, New York; Photo by Cary Whittier



Kiki Kogelnik, *Superwoman*, 1973; Oil and acrylic on canvas, 99 x 60 x 2 in.; National Museum of Women in the Arts, Gift of the Honorable Joseph P. Carroll and Mrs. Carroll; © 1973 Kiki Kogelnik Foundation. All Rights reserved



Lois Mailou Jones, *Ode to Kinshasa*, 1972; Mixed media on canvas, 48 x 36 in.; National Museum of Women in the Arts, Gift of the artist; © Lois Mailou Jones





Bertha Boynton Lum, *May Night*, 1913; Wood engraving on paper, 13 1/4 x 14 1/4 in.; National Museum of Women in the Arts, Gift of Mrs. Jefferson Patterson



Grace Arnold Albee, *Edible*, 1972; Graphite on sketch paper, 5 1/2 x 8 1/2 in.; National Museum of Women in the Arts, Gift of P. Frederick Albee; © Grace Arnold Albee



Laure Tixier, *Plaid Houses (Maquettes)*: *Blue Japan House, Blue Art Deco House, Red Deconstructivist House, White Hut, Acid Green Dome House, Brown Usha Hut, Pink Tower, Turquoise Blue Colonial House (Barbados), Orange Breton House*, 2005–11; Wool, felt, and thread, dimensions variable; National Museum of Women in the Arts, Gift of Les Amis du NMWA, Paris, France; © Laure Tixier



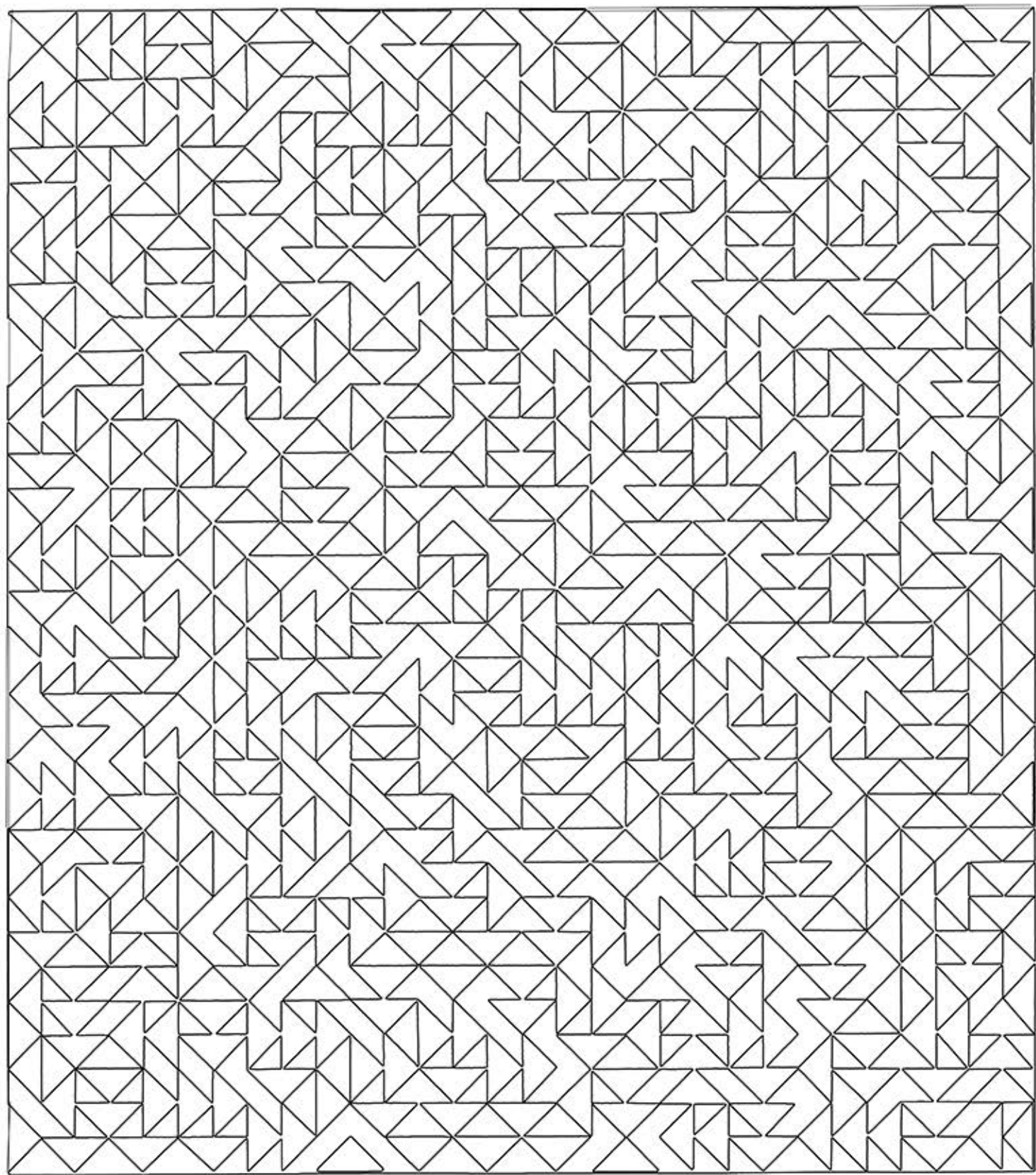
#### COVER IMAGE

Maria Sibylla Merian, *Plate 31* (from "Dissertation in Insect Generations and Metamorphosis in Surinam", second edition), 1719; Hand-colored engraving on paper, 20 1/2 x 14 1/2 in.; National Museum of Women in the Arts, Gift of Wallace and Wilhelmina Holladay



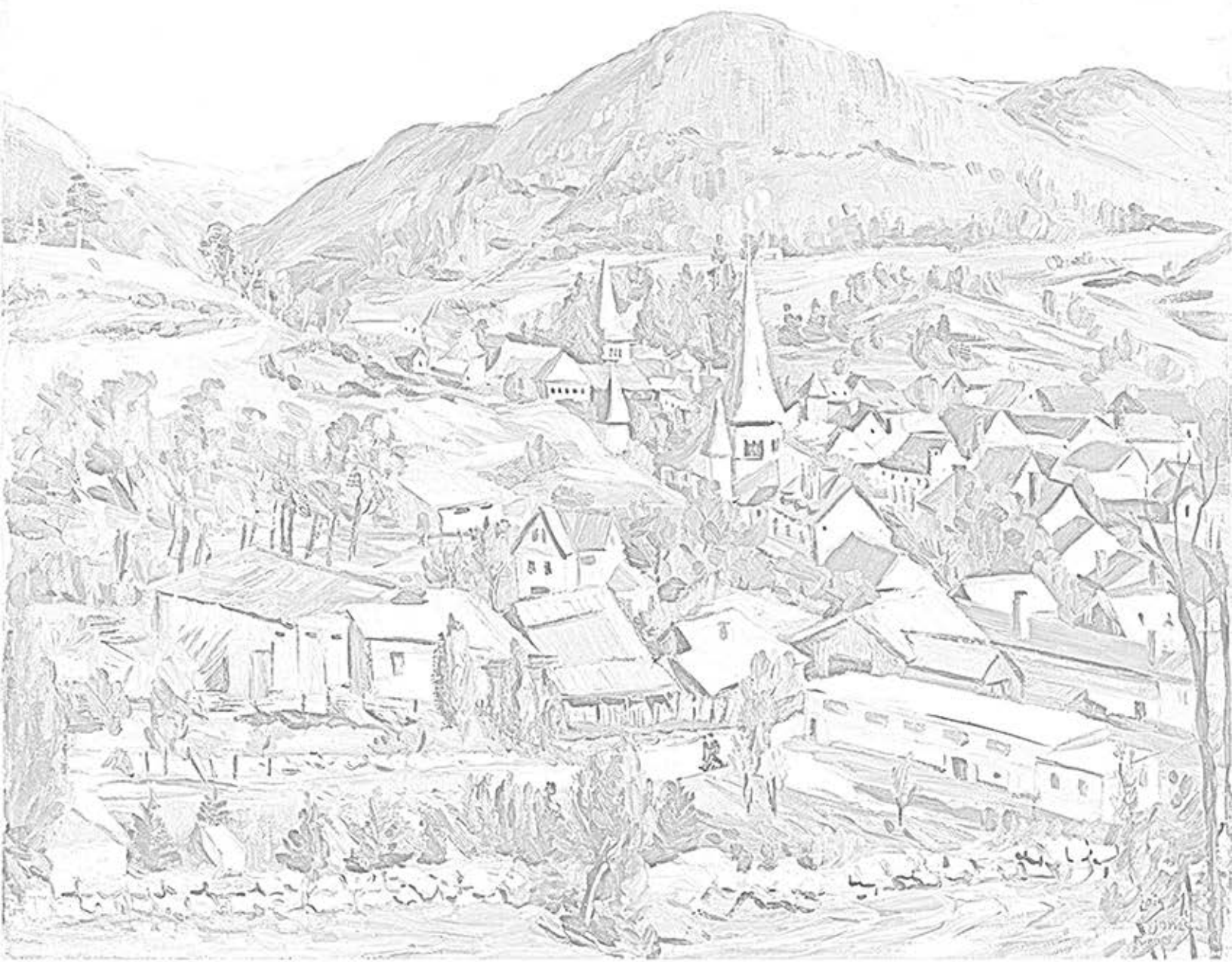
Alison Saar, *Washtub Blues*, 2000





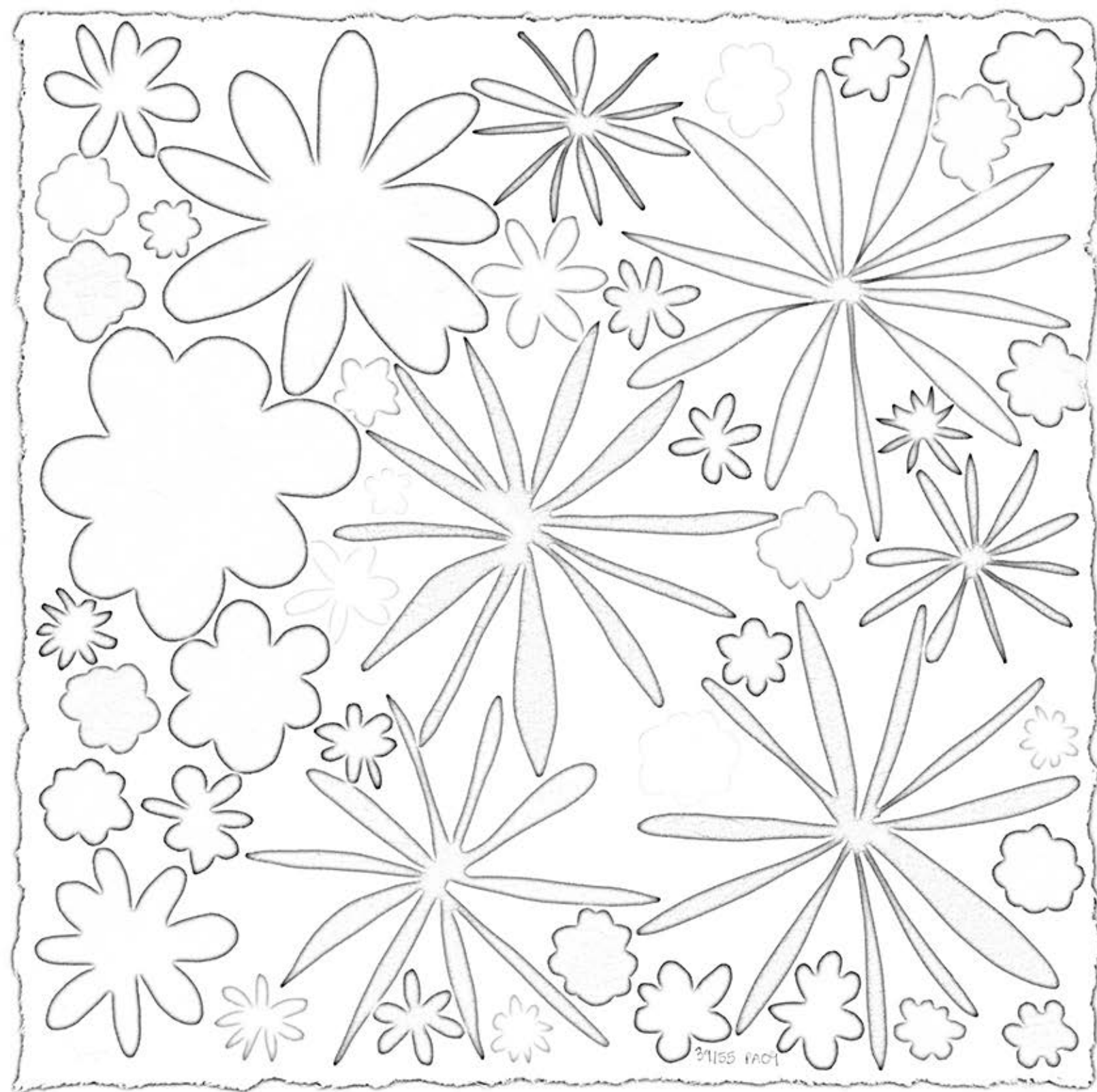
Anni Albers, *Untitled*, 1969





Loïs Mailou Jones, *Arreau, Hautes-Pyrénées*, 1949



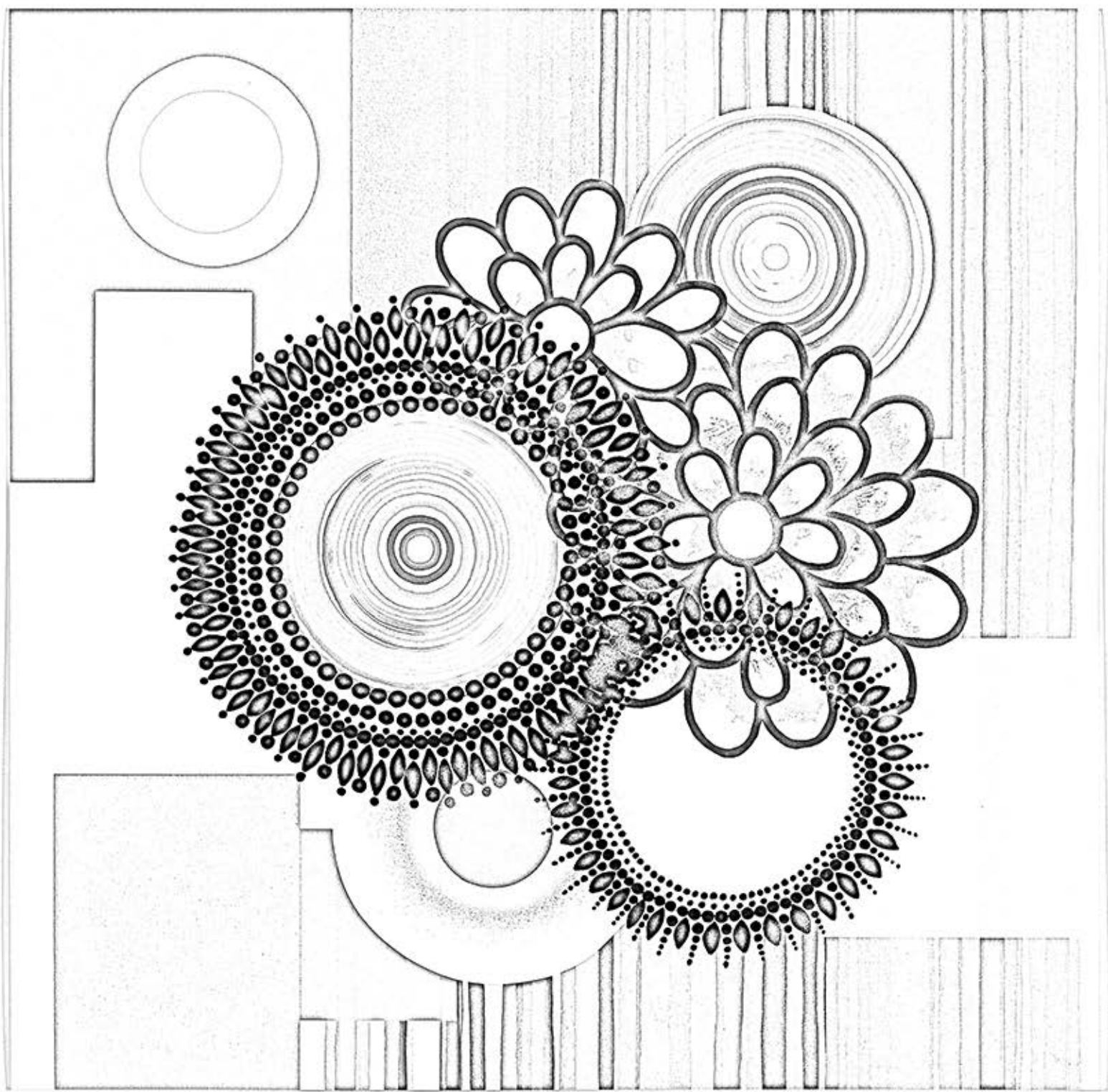


Polly Apfelbaum, *Night Flowering*, 2009



Amy Lamb, *Vase of Flowers I*, 1999





Beatriz Milhazes, *Bibi*, 2003

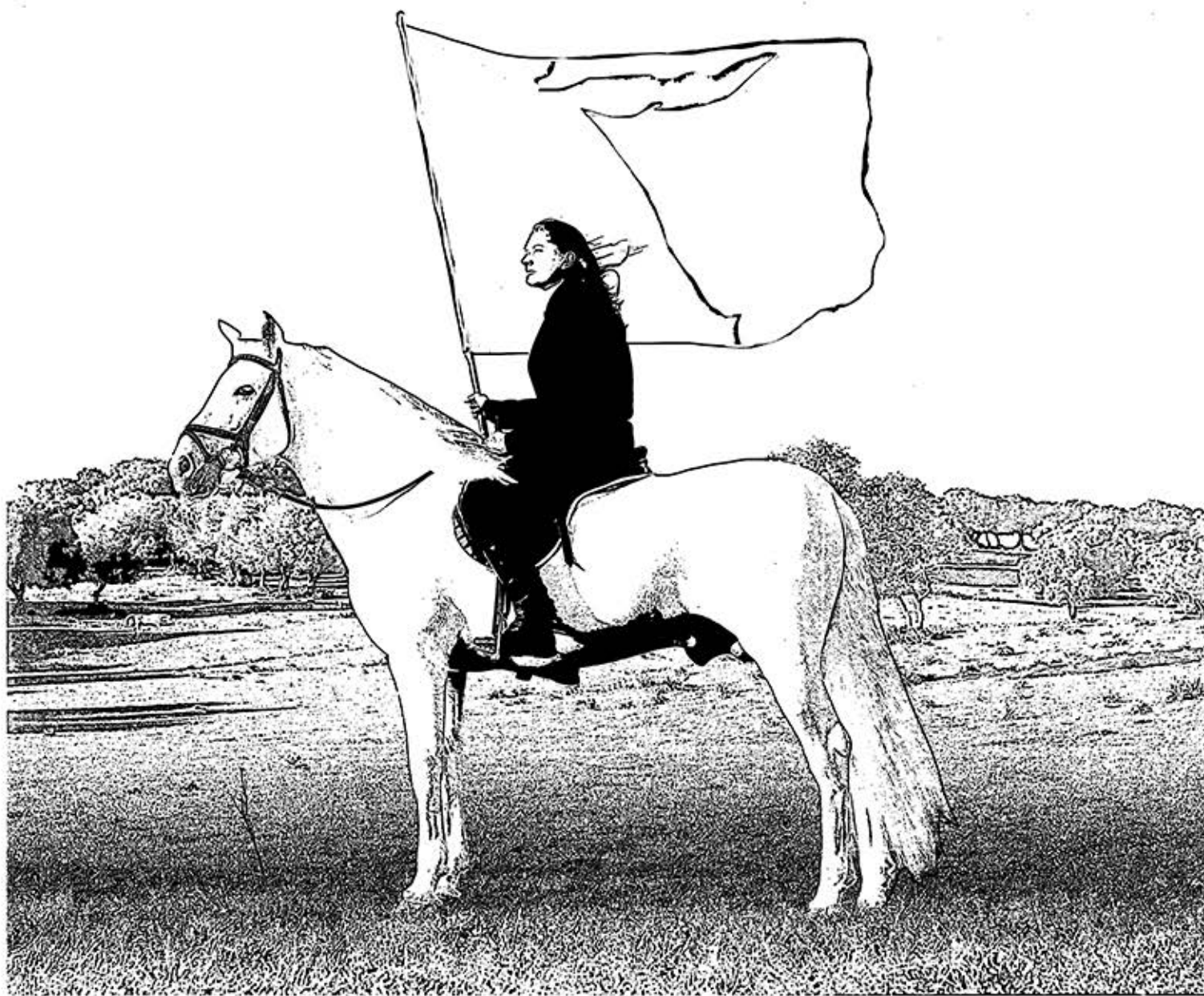


Maria Sibylla Merian, *Plate 12* (from "Dissertation in Insect Generations and Metamorphosis in Surinam", second edition), 1719



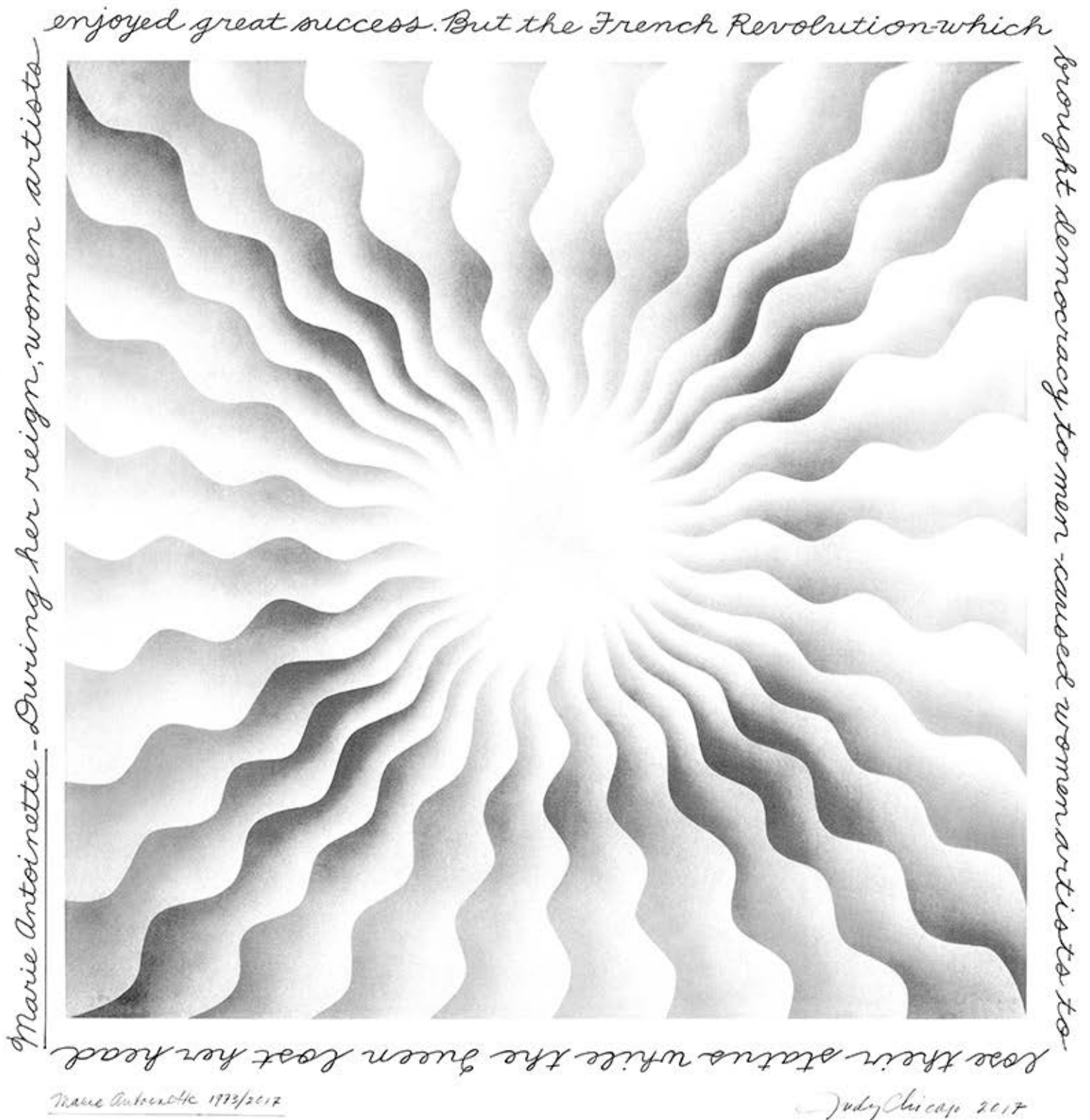


Maria Sibylla Merian, *Plate 55* (from "Dissertation in Insect Generations and Metamorphosis in Surinam", second edition), 1719

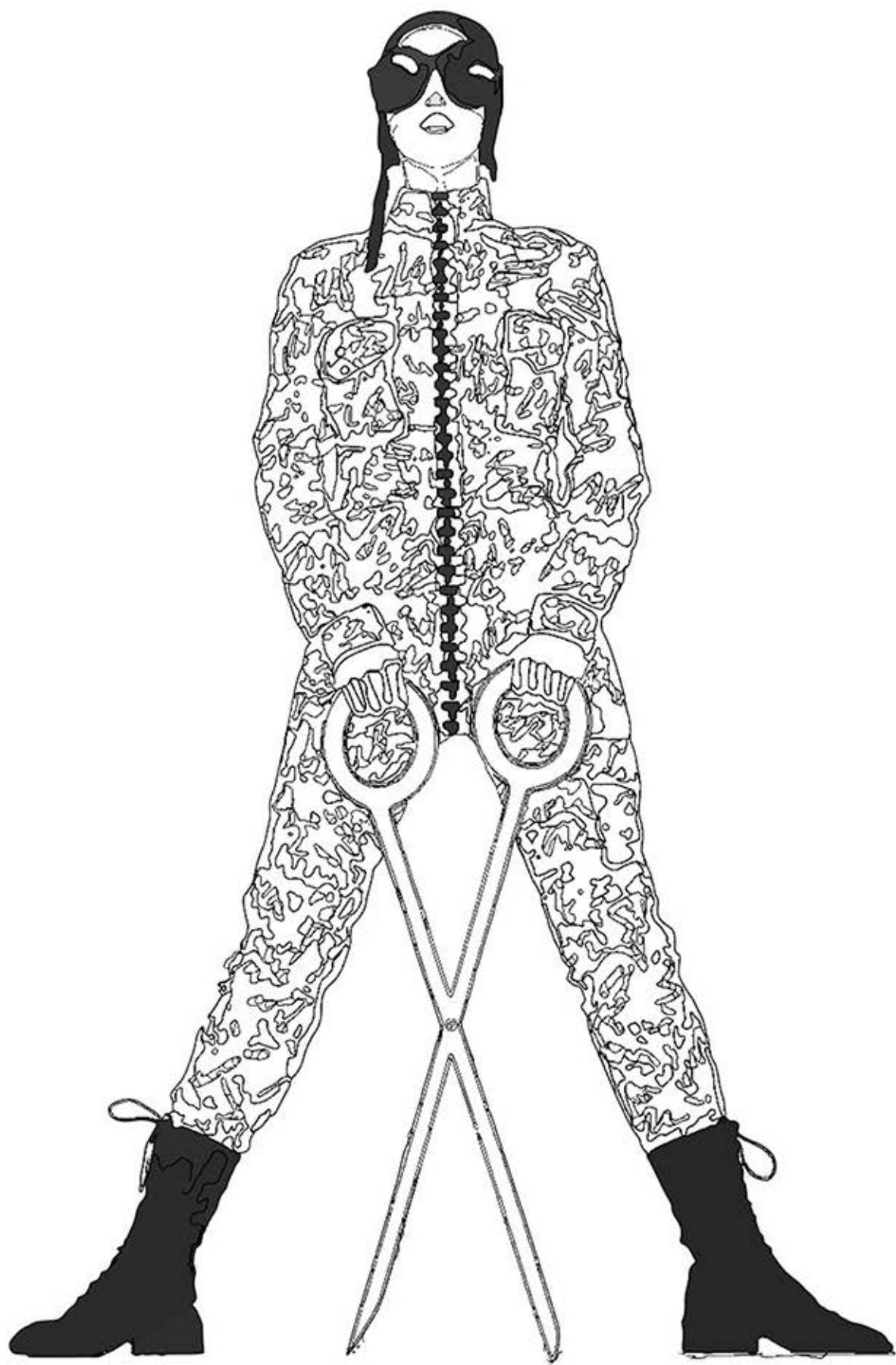


Marina Abramović, *The Hero*, 2001



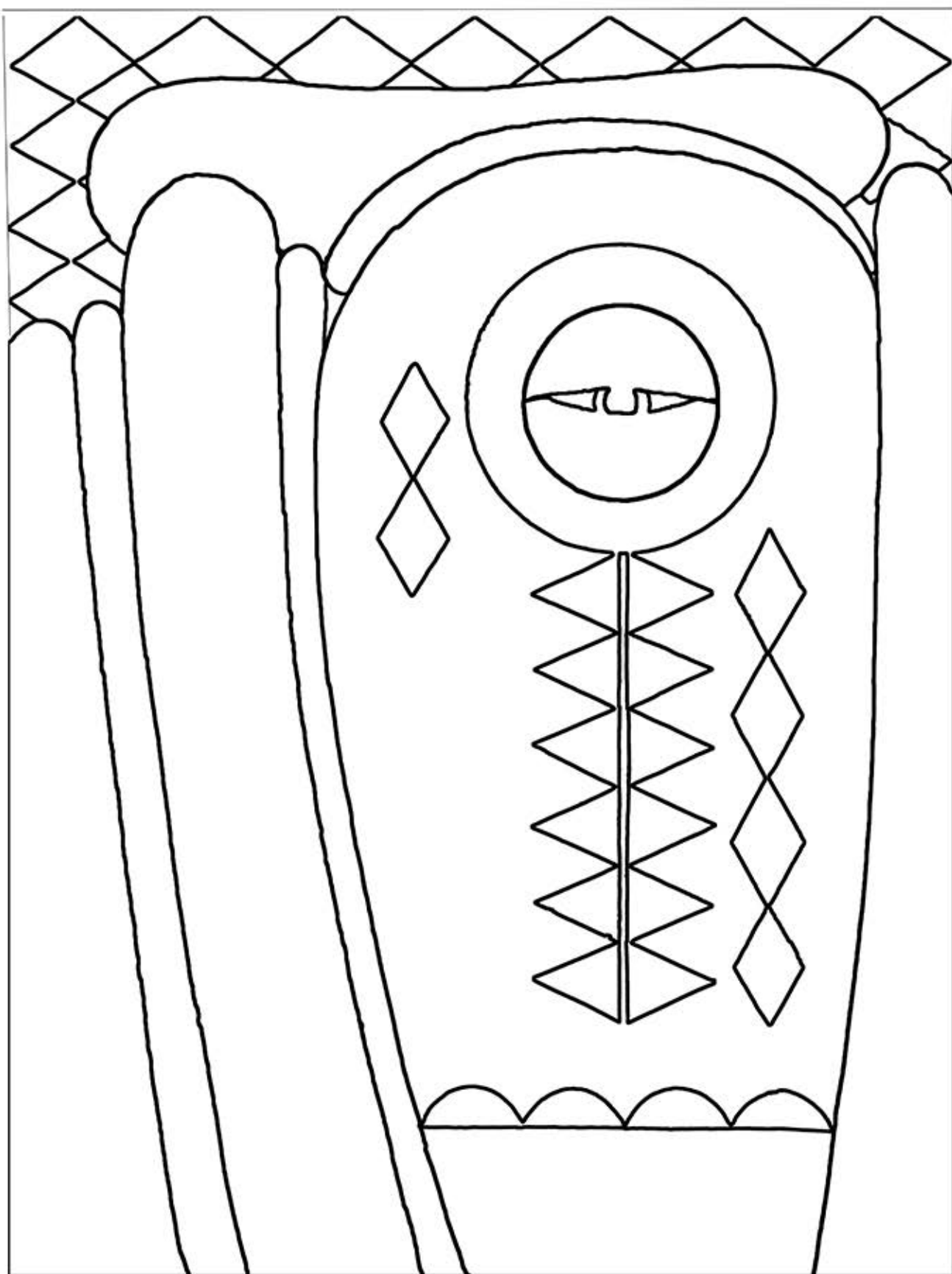


Judy Chicago, *Marie Antoinette* from "The Great Ladies Series", 1973/2016



Kiki Kogelnik, *Superwoman*, 1973





Lois Mailou Jones, *Ode to Kinshasa*, 1972



Bertha Boynton Lum, *May Night*, 1913





Grace Arnold Albee, *Edible*, 1972



Laure Tixier, *Plaid Houses (Maquettes)*, 2005-11