

## Press Images

*Mary Ellen Mark: Girlhood*

National Museum of Women in the Arts | January 16–April 18, 2021



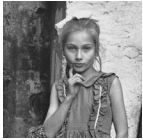
**Conditions for reproduction:**

- A single outlet may only print up to two images per piece. Request up to two hi-res files by email.
- Images may not be cropped or bled off the page;
- No text may appear over the images;
- Images must be published with required caption directly under the reproduction, or on the page facing the reproduction;
- All reproductions must be printed in full-tone black and white or full color; and
- Reproductions of a specific detail require advance approval and must be properly noted.

**Media Contact:**

Amy Mannarino, (202) 783-7373, amannarino@nmwa.org

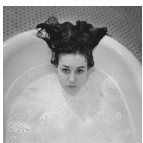
Emma Filar, (202) 783-7377, efilar@nmwa.org



Mary Ellen Mark, *Emine Dressed Up for Republic Day, Trabzon, Turkey*, 1965 (printed later); Gelatin silver print, 20 x 16 in.; NMWA, Gift of Frieder K. Hofmann; © Mary Ellen Mark/The Mary Ellen Mark Foundation



Mary Ellen Mark, *Girl Jumping over a Wall, Central Park, New York City*, 1967 (printed later); Gelatin silver print, 16 x 20 in.; NMWA, Gift of Jill and Jeffrey Stern; © Mary Ellen Mark/The Mary Ellen Mark Foundation



Mary Ellen Mark, *Laurie in the Bathtub, Ward 81, Oregon State Hospital, Salem, Oregon*, 1976 (printed later); Gelatin silver print, 20 x 24 in.; NMWA, Gift of Susan and Earl Cohen; © Mary Ellen Mark/The Mary Ellen Mark Foundation



Mary Ellen Mark, *Tashara and Tanesha Reese, Twins Days Festival, Twinsburg, Ohio*, 1998 (printed later); Gelatin silver print, 20 x 24 in.; NMWA, Gift of Robert and Kathi Steinke; © Mary Ellen Mark/The Mary Ellen Mark Foundation



Mary Ellen Mark, *J'Lisa Looks Through the Blinds, Streetwise Revisited*, 2014; Gelatin silver print, 11 x 14 in.; NMWA, Gift of Frieder K. Hofmann; © Mary Ellen Mark/The Mary Ellen Mark Foundation