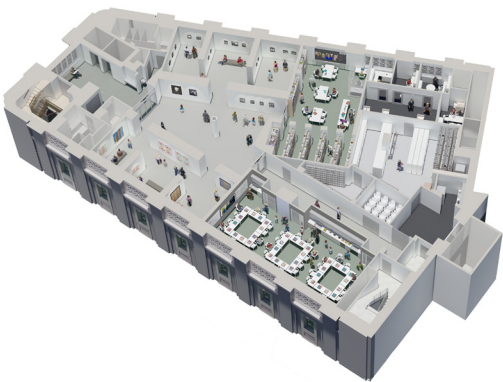
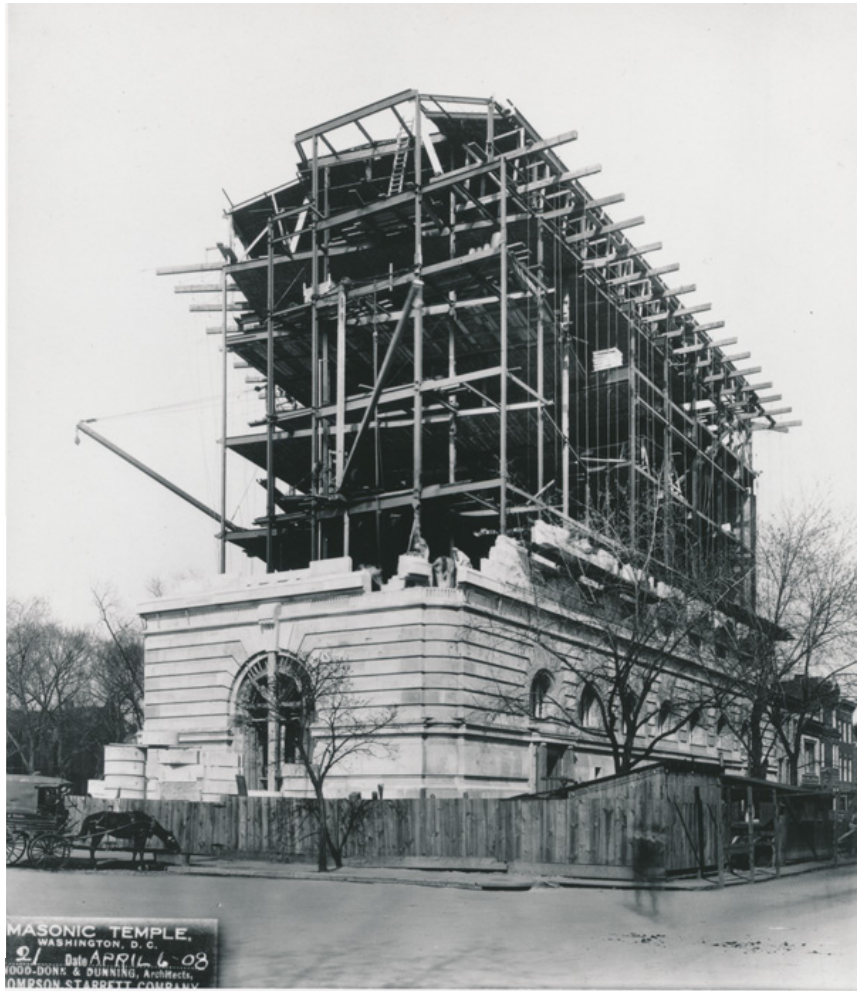


## Press Images

*National Museum of Women in the Arts Renovation 2021–23*



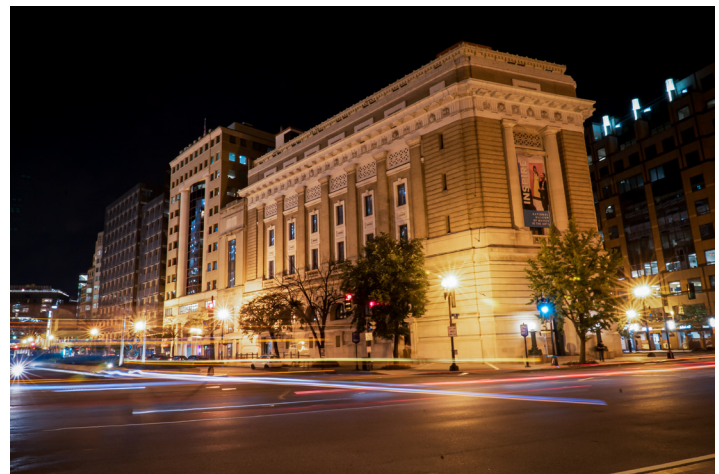








**Media Contacts:**  
 Amy Mannarino, [amannarino@nmwa.org](mailto:amannarino@nmwa.org)  
 Emma Filar, [efilar@nmwa.org](mailto:efilar@nmwa.org)



**Conditions for reproduction:**

- Images may not be cropped or bled off the page;
- No text may appear over the images;
- Images must be published with required caption directly under the reproduction, or on the page facing the reproduction;
- All reproductions must be printed in full-tone black and white or full color; and
- Reproductions of a specific detail require advance approval and must be properly noted.



National Museum of Women in the Arts, Exterior, 13th Street and New York Avenue sides; Photo by Thomas H. Field



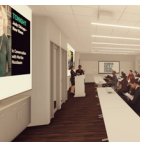
National Museum of Women in the Arts renovation project: exhibition gallery; Rendering by Sandra Vicchio & Associates, LLC, with Marshall Craft Associates, Inc.



National Museum of Women in the Arts renovation project: new education studio; Rendering by Sandra Vicchio & Associates, LLC, with Marshall Craft Associates, Inc.



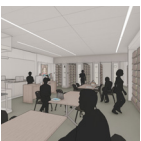
National Museum of Women in the Arts renovation project: entry lobby, concept sketch; Rendering by Sandra Vicchio & Associates, LLC, with Marshall Craft Associates, Inc.



National Museum of Women in the Arts renovation project: new education studio, configured for lecture; Rendering by Sandra Vicchio & Associates, LLC, with Marshall Craft Associates, Inc.



National Museum of Women in the Arts renovation project: Reading Room, concept sketch; Rendering by Sandra Vicchio & Associates, LLC, with Marshall Craft Associates, Inc.



National Museum of Women in the Arts renovation project: Reading Room, concept sketch; Rendering by Sandra Vicchio & Associates, LLC, with Marshall Craft Associates, Inc.



The Great Hall and Mezzanine of the National Museum of Women in the Arts under renovation in 1986



National Museum of Women in the Arts renovation project: Learning Commons; Rendering by Sandra Vicchio & Associates, LLC, with Marshall Craft Associates, Inc.



Construction of the National Museum of Women in the Arts building (formerly Masonic Temple), 1908; Courtesy of the Columbia Historical Society



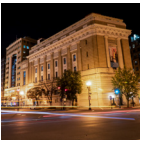
National Museum of Women in the Arts renovation project: entrance lobby, rotunda, grand stair, and Teresa Lozano Long Gallery; Rendering by Sandra Vicchio & Associates, LLC, with Marshall Craft Associates, Inc.



Wallace F. Holladay, Anne-Imelda Radice, and Coke Florance looking at building



National Museum of Women in the Arts renovation project: west elevation; Rendering by Marshall Craft Associates, Inc., with Sandra Vicchio & Associates, LLC



National Museum of Women in the Arts, Exterior, 13th Street and New York Avenue sides, evening; Photo by Cameron Robison