

Winter / Year in Review 2023

Women in the Arts

NATIONAL
MUSEUM
OF WOMEN
IN THE ARTS





DEAR MEMBERS AND FRIENDS,

Welcome back! The museum's doors are open to the public once again, and we are delighted to see artists, members, campaign supporters, and crowds of enthusiastic visitors exploring the renewed building.

Celebration and ceremony marked our reopening—and, most of all, JOY! We were honored to host First Lady Jill Biden, who spoke at a gathering for supporters and friends who made the renovation possible. A longtime admirer of the museum, Dr. Biden spoke about women's lives and creativity, saying, "We deserve to tell our stories—to be a part of the history museums tell, and to have a place to come together, listen, and join in kinship and community. Inside these walls, women's art has space to breathe and shine." Grammy Award-winning soprano Ana María Martínez then offered a poignantly beautiful rendition of "Somewhere" as part of her commemorative performance that evening.

Just before the ribbon-cutting on October 21, poet Alexa Patrick read a new work inspired by NMWA. She honored the women whose art is on our walls:

"Thank you, Fede! / Thank you, Alice! / Thank you, Niki! / Thank you, Frida! / Thank you, Chakaia! / Thank you, Amy! . . . for carrying our culture, / giving us bricks to build / resistance, revolution, / renaissance."

Our new special exhibitions and collection installation are being lauded by the public and press. One journalist described the museum as "a revelation."

In this issue of *Women in the Arts*, you will find the annual report for fiscal year 2023. In it, you will see our laser focus on achieving our goals for NMWA's momentous reopening—years in the making. As we look ahead with great excitement, I want to share our warmest appreciation with you—NMWA's dedicated and inspiring members and friends—who have stood by the museum through this ambitious project.

Your support has made this possible! Our Space to Soar capital campaign continues just through the end of December. Thank you, and there is still time to join us in this once-in-a-generation project of renewal and reopening.

WITH GRATITUDE,

Susan Fisher Sterling
The Alice West Director

CHAMPION WOMEN THROUGH THE ARTS

MUSEUM INFORMATION
1250 New York Avenue NW
Washington, DC 20005

WEBSITE
<https://nmwa.org>
BROAD STROKES BLOG
<https://nmwa.org/blog>

MAIN
202-783-5000
TOLL FREE
800-222-7270
MEMBER SERVICES
866-875-4627; member@nmwa.org
SHOP
202-783-7994
LIBRARY AND RESEARCH CENTER
202-783-7365; lrc@nmwa.org
MAGAZINE SUBSCRIPTIONS
866-875-4627

HOURS
Tuesday–Sunday, 10 a.m.–5 p.m.;
Closed on Mondays and select
holidays

ADMISSION
NMWA Members free, Adults \$16,
D.C. residents \$13, Visitors 70 and
over \$13, Visitors 21 and under
free, Visitors with disabilities plus
one free

Free Community Days are the first
Sundays and second Wednesdays of
every month.

WOMEN IN THE ARTS
Winter/Year in Review 2023
Volume 41, no. 4

Women in the Arts is a publication
of the National Museum of
Women in the Arts®

DIRECTOR
Susan Fisher Sterling
EDITOR
Elizabeth Lynch
ASSISTANT EDITOR
Alicia Gregory
DESIGN
Studio A, Alexandria, VA

For advertising rates and
information, call 202-266-2814
or email elynych@nmwa.org.

Women in the Arts is published
four times a year as a benefit for
museum members by the National
Museum of Women in the Arts,
1250 New York Avenue, NW,
Washington, D.C. 20005-3970.
Copyright © 2023 National Museum
of Women in the Arts. National
Museum of Women in the Arts®,
The Women's Museum®,
#5WomenArtists™, and Women in
the Arts® are registered trademarks
of the National Museum of Women
in the Arts.

On the cover: Hung Liu, *Winter with
Cynical Fish* (detail), 2014; Oil on
canvas, 60 × 72 in.; NMWA, Gift of
Fred M. & Nancy Livingston Levin,
The Shenson Foundation in memory
of Ben & A. Jess Shenson; © 2023
Hung Liu Estate/Artists Rights
Society (ARS), New York

Director's photo: © Michele Mattei



fb.com/womeninthearts



[@womeninthearts](https://twitter.com/womeninthearts)



[@womeninthearts](https://www.instagram.com/womeninthearts)



Contents

"Liu was a tireless advocate
for women in history."

PAGE 4



// FEATURES

↑ 4

Hung Liu: Making History

A new exhibition of Liu's paintings and works on paper illuminates the role of photography in her life and art.

ORIN ZAHRA

→ 8

Impressive: Antoinette Bouzonnet-Stella

In the seventeenth century, Bouzonnet-Stella created an extraordinary series of prints in a family workshop at the Louvre.

VIRGINIA TREANOR



↑ 14

FY23 Year in Review: The Road to Reopening

During the recent year, NMWA's art and programs reached visitors near and far, while plans for the reopening kicked into high gear.

ALICIA GREGORY
AND NMWA STAFF

// DEPARTMENTS

2 Culture Watch

10 Calendar

20 Recent Acquisitions:
Highlights from the
Past Year

22 Space to Soar

26 Museum Events

29 Supporting Roles

33 Museum Shop



Culture Watch

2

// EXHIBITIONS

ARIZONA

The North Star Changes:
Works by Brenda Mallory
Heard Museum, Phoenix
Through February 5, 2024
<https://heard.org>

Mallory's art—sculptures and large-scale installations made from reclaimed and found objects—explores ideas of permanence and impermanence.

HAWAII

Lauren Hana Chai:
The Five Senses
Honolulu Museum of Art
Through January 14, 2024
<https://honolulumuseum.org>

Hana Chai's most recent paintings juxtapose traditional elements of Korean folk art and Buddhist temple architecture with reflections on contemporary identity.

ILLINOIS

Ruth Duckworth:
Life as a Unity
Smart Museum of Art, Chicago
Through February 4, 2024
<https://smartmuseum.uchicago.edu>

Duckworth's first retrospective since 2005 features nearly sixty of her sculptural works, including earthy vessels, large-scale murals, and porcelains.

MASSACHUSETTS

The Red Dress
Fuller Craft Museum, Brockton
February 17–May 19, 2024
<https://fullercraft.org>

Initiated by artist Kirstie Macleod, the Red Dress traveled the globe from 2009 to 2022, augmented by nearly 350 people telling their stories through embroidery.



ILLINOIS // Ruth Duckworth, *Untitled*, ca. 1974; Ceramic wall relief, 40 3/4 x 44 x 7 1/2 in.; On view at the Smart Museum of Art

SMART MUSEUM OF ART, THE UNIVERSITY OF CHICAGO, GIFT OF BARBARA BALKIN COTTLE AND ROBERT COTTLE, 1984.1; © ESTATE OF RUTH DUCKWORTH



MARTA MINUJÍN ARCHIVE, © MARTA MINUJÍN, COURTESY OF HENRIQUE FARIA, NEW YORK, AND HERLITZKA & CO., BUENOS AIRES

NEW YORK // Marta Minujín in her Paris studio with her first multicolored mattresses sculpture, 1963; On view at the Jewish Museum

MISSOURI

Hajra Waheed
Contemporary Art Museum
St. Louis
Through February 11, 2024
<https://camstl.org>

Featuring recent works on paper, video, and painting, Waheed's first major museum solo exhibition explores the legacies of colonial and state violence.

NEVADA

April Bey: Atlantica,
The Gilda Region
Nevada Museum of Art, Reno
Through February 4, 2024
<https://www.nevadaart.org>

Through an Afrofuturist lens, Bey reflects on queerness, feminism, and internet culture in vibrant multimedia tableaux.

NEW HAMPSHIRE

Homecoming:
Domesticity and Kinship
in Global African Art
Hood Museum, Hanover
Through May 25, 2024
<https://hoodmuseum.dartmouth.edu>

Emphasizing the role of women artists in African and African diaspora art histories, this exhibition explores themes of home, kinship, motherhood, femininity, and intimacy.

NEW JERSEY

Reciting Women:
Alia Bensliman &
Khalilah Sabree
Princeton University Art Museum
January 20–March 31, 2024
<https://artmuseum.princeton.edu>

Through their paintings, Bensliman and Sabree, two Muslim American artist educators, grapple with human rights struggles and the challenges of cultural belonging.

NEW YORK

Marta Minujín:
Arte! Arte! Arte!

Jewish Museum, New York City
Through March 31, 2024

<https://thejewishmuseum.org>

This survey exhibition features Minujín's mattress-based soft sculptures, fluorescent large-scale paintings, psychedelic drawings and performances, and vintage film footage.

International

UNITED KINGDOM

Women in Revolt!
Art and Activism in the UK
1970–1990

Tate Britain, London
Through April 7, 2024
<https://tate.org.uk>

Work by more than 100 feminist artists explores topics including the British Women's Liberation movement and the visibility of Black and South Asian women artists.

// BOOKS



Stuff: Instead of a Memoir

This is an idiosyncratic memoir, which feminist art writer Lucy R. Lippard begins by declaring, "I have never had any interest in writing one, spilling the dramas and all the ups and downs."

In **Stuff: Instead of a Memoir** (New Village Press, 2023), Lippard acts as curator and docent of her home, leading readers on an exhibition tour through her life, an eventful eighty-six years. The book's compact, cluttered aesthetic echoes the rooms of her modest New Mexico house. "I'm a packrat," she writes, surveying the objects on view—pets' photographs, protest buttons, book covers, desert stones, and art, but not the art she already gave to the New Mexico Museum of Art—to tell stories of family and career. "The mid 1970s was a time when I couldn't sit down at a kitchen table with co-conspirators without another group being formed." In that era, she co-founded the artists' bookstore Printed Matter and the magazine *Heresies: A Feminist Publication on Art and Politics*, among other projects. Lippard writes, "I've always been an advocate, not an adversary." Her "stuff" enables her to pay homage to good friends, revisit past enthusiasms, and reflect on an inspirational life.

// Elizabeth Lynch



Shelley Niro: 500 Year Itch

"One of the most defining characteristics of the artist Shelley Niro...[is] her resolute assuredness...to define herself, for herself," writes Indigenous artist and curator Greg Hill in **Shelley Niro: 500 Year Itch** (Art Gallery of Hamilton, 2023), a sweeping catalogue accompanying Niro's first retrospective. The prolific four-decade career of the Mohawk artist spans paintings, prints, photographs, films, and multimedia installations as well as sculptural beadwork, photo collage, and more. Here they're organized not chronologically but as a constellation—images lead us to essays, and essays lead us to images. This format speaks to enduring links, both thematically and materially, throughout the artist's practice. Across decades, we watch Niro define herself and address common preconceptions about gender, culture, and Indigenous peoples. She does so with signature humor, subversion, irony, wit, and confidence. Eleven essays by curators and scholars offer intimate looks into the artist's biography and practice. Ultimately, as the exhibition's co-curator Melissa Bennet observes, all of Niro's works are "sites of optimism, and they represent the artist's extraordinary effort to reconcile trauma and colonization through a lens of hopefulness."

// Alicia Gregory

COURTESY OF TATE BRITAIN; © SEE RED WOMEN'S WORKSHOP (1974–1990)



UNITED KINGDOM // See Red Women's Workshop, *7 Demands*, 1974; On view at Tate Britain

COURTESY OF THE HOOD MUSEUM OF ART, DARTMOUTH; GIFT OF ROBERT J. GREY



NEW HAMPSHIRE // J. D. 'Okhai Ojeikere, *Abebe*, 1975; Gelatin silver print; On view at the Hood Museum of Art

Hung Liu

making history

through october 20, 2024

Corn Carrier, 1999;
Oil on canvas, 80 × 70 in.;
NMWA, Promised gift of
Patti and Jerry Sowalsky

Orin Zahra

Nine paintings and works on paper by Hung Liu (b. 1942, Changchun, China; d. 2021, Oakland, California) greet visitors to one of NMWA's new fourth-floor galleries. Alongside this special presentation, a digital resource delves deeper into the images and objects that served as Liu's lifelong source material and inspiration. Viewing the artist's profound and layered work alongside her photographic archives provides insight into Liu's life and art.



Unidentified photographer, Woman seated on prop balustrade (inspiration for *Shui-Water*), ca. 1900; Artist's photograph of archival image, Collection of Hung Liu and Jeff Kelley

Shui-Water, 2012; Color aquatint etching with gold leaf on paper, 47 × 36 in.; NMWA, Gift of Steven Scott, Baltimore, in memory of the artist and in honor of the thirty-fifth anniversary of the National Museum of Women in the Arts



© 2023 HUNG LIU ESTATE/ARTISTS RIGHTS SOCIETY (ARS), NEW YORK



© 2023 HUNG LIU ESTATE/ARTISTS RIGHTS SOCIETY (ARS), NEW YORK; PHOTO BY LEE STALS WORTH

HUNG LIU WAS ONE OF TEN MILLION URBAN YOUTHS sent to re-education camps in the Chinese countryside during Mao Zedong's Cultural Revolution. She labored in rice and wheat fields in Dadu Lianghe, a village approximately fifty miles outside of Beijing. This experience influenced her deeply, inspiring her to view the working classes, the vulnerable and oppressed, and the voiceless with the utmost empathy—and to represent them with dignity in her art.

Liu was drawn to images of individuals as well as symbols which, layered into her works, suffuse them with meaning. Photography played a critical role in the artist's life and career, ranging from candid shots that she took of villagers working alongside her to nineteenth-century portraits of women that became the source imagery for her own art.

Photographs from the Archives

Preparing this exhibition with the support of the Hung Liu Estate, I studied numerous physical photographs of courtesans in Liu's archive, which the artist discovered on a research trip to Beijing in the 1990s. It was surreal to hold the objects in my hands, realizing that Liu must have held them countless times in her studio. The framing of many images was slightly off-center: the photographs I held were snapshots that Liu took of existing historical images, objects that could not leave China. These gave me a new understanding of Hung Liu as a researcher and an inquisitive student of history.

In Liu's archive, the black-and-white images of women and young girls were haunting. It was easy to see the compassion that Liu felt for them. Questions immediately came to mind, perhaps similar to the artist's own ruminations—Who

were these women? What were their lives like? How might they have felt seeing their faces memorialized in paint?

There were moments of gleeful discovery whenever I chanced upon a face that Liu had later captured in her art. Some were direct borrowings, as seen in the photograph that inspired NMWA's work on paper *Shui-Water* (2012). While the source photograph shows the woman posed on a prop balustrade like a stage set, Liu placed the woman in a timeless, otherworldly setting inspired by traditional Chinese woodcuts, whose reproductions form another part of the artist's archive.

Poetic Interpretations

Liu's adaptations from the photographs are captivating, as are the elements that she added to make each image her own. Her works frequently include signs and symbols: Buddhist and other spiritual figures; lotus blossoms and floral motifs; and birds such as cranes, which symbolize serenity and blessings, and Song Dynasty ducks for love and devotion. Liu incorporated these symbols as a way to guide and protect the subjects of her works.

In *Winter with Cynical Fish* (2014), one of a series of four diptych paintings—each representing a season—Liu layered the woman's body with painted leaves of white bamboo, a plant noted for its hardiness. The fish imagery references the paintings of the eminent Chinese artist Bada Shanren (born Zhu Da, ca. 1625–1705). Bada is known for his satirical images of birds and fish, which reflected moods or temperaments such as sadness or bemusement, although Liu's own interpretations of the fish are decidedly more expressive.

This work exemplifies art historian Lucy R. Lippard's observation of Liu's practice as one that "focuses on the redemption of marginalized women through what might be called the body politic."¹ Indeed, after the museum acquired *Winter with Cynical Fish* and *Summer with Cynical Fish* (2014) in 2019, Liu told me that she wanted the fish to accompany the women throughout the seasons. It was the artist's poetic effort to honor these figures, who perhaps went unvalued in their own lifetimes, and further elevate their status through images that were esteemed in Chinese cultural history.

Liu was also inspired by Dorothea Lange's photographs of migrants in the American Dust Bowl. In *Corn Carrier* (1999), a promised gift to the museum, she explored the effects of displacement and economic depression on Chinese migrant workers. Here, she depicts a young woman who wears a loose shirt, khaki pants, and sneakers. On her back, a large cluster of thick brushstrokes resembles corn stalks. As this woman is burdened under the weight of crops on her back, her face shows anguish and fatigue. Liu's signature drip marks, which she called "weeping realism," heighten the emotion of the scene.

Legacy

Dorothy Moss, director of the Hung Liu Estate, describes Liu's conceptual approach to revisiting the past: "She often said that 'history is a verb,' and her use of archives to reinsert buried histories into museum spaces was radical when she first began doing this work in the early 1990s." The estate plans to expand the use of the artist's archives for public

audiences. Describing Liu's expansive records, Moss says, "I have been amazed at how careful she was about saving everything, going back to her middle school sketches from China. Her papers also include journals, letters, and sketches she made while she was in her 20s during the Cultural Revolution. Once digitized and accessible, this incredibly rich material will undoubtedly change the course of American art history."

The artist's death in 2021 is felt sorely by those of us who knew her and are moved by her art. Liu was a tireless advocate for women in history. Looking through just a portion of her archives and thinking about her legacy, I am exhilarated to discover just how much more there is to learn—and share—from the keenly intelligent, sensitive, and intrepid Hung Liu.

// Orin Zahra is associate curator at the National Museum of Women in the Arts.

Note:

1. Lippard quoted in *Hung Liu: Portraits of Promised Lands*, 2021 (National Portrait Gallery, Smithsonian Institution, Washington, D.C., in association with London and New Haven: Yale University Press), 83.

Hung Liu: Making History is organized by the National Museum of Women in the Arts and generously supported by Stephanie Sale and the members of NMWA.

LEARN MORE

To view the online exhibition and see more archival photographs from Liu's practice, visit <https://nmwa.org/exhibition-hung-liu>.



Above: Photograph of Hung Liu, ca. 1970–72

Winter with Cynical Fish, 2014; Oil on canvas, 60 × 72 in.; NMWA, Gift of Fred M. & Nancy Livingston Levin, The Shenson Foundation in memory of Ben & A. Jess Shenson



Impressive

Antoinette Bouzonnet-Stella

Through October 20, 2024

Virginia Treanor

Researching historical women artists is often fraught. Archival documentation may be sparse or even nonexistent, but records about artists' relatives or associates can yield insights or clues.¹ This is the case with Antoinette Bouzonnet-Stella (b. 1641, Lyon, France; d. 1676, Paris), the seventeenth-century French artist who executed the print series *The Entrance of the Emperor Sigismund into Mantua* (*L'Entrée de L'Empereur Sigismund a Mantoue*, 1675), now on view in NMWA's redesigned fourth-floor galleries. While art historians today know little about the details of Bouzonnet-Stella's life, glimpses of her existence and work are visible in research on her family members.

Life at the Louvre

Bouzonnet-Stella's uncle Jacques Stella (1596–1657) was an artist from Lyon, France, who studied painting in Rome. Upon his return to France, he was granted lodging and studio space in the Louvre, which at that time was a royal palace with space dedicated to housing and studios for prestigious artists. There, Stella continued his painting career until the deaths of his major patrons, Cardinal Richelieu (1585–1642) and King Louis XIII (1601–1643); he then established a printing workshop in the Louvre. In 1654, Stella moved to larger apartments in the palace, presumably to accommodate this new enterprise and the additional workers it required. For these workers, Stella turned to his sister's children: Claudine, Antoinette, Françoise, and their brother, Antoine. He gave the siblings a robust artistic education, focusing on print design and printmaking.

Just three years after the Bouzonnet-Stella siblings arrived, their uncle died, but the workshop was apparently already so successful that Claudine, only twenty-one, became its head. Jointly with her brother Antoine, she was named as the heir of Stella's apartments in the Louvre. For Claudine, this inheritance came with a condition: if she ever wished to marry, she would have to obtain the king's permission. She never married, indicating that such a change could have jeopardized her claim to the apartments and possibly the workshop as well.

In this environment, Antoinette Bouzonnet-Stella lived and worked with her siblings. As head of the family workshop after their uncle's death, Claudine was granted a special privilege that allowed her to publish prints of Jacques Stella's designs. The sisters also took on individual commissions for work, such as Bouzonnet-Stella's series. Executed just one

This extraordinary print series demonstrates Bouzonnet-Stella's mastery of skill and technique.

year before her tragically early death at about age thirty-five, *The Entrance of the Emperor Sigismond into Mantua* reproduces a Renaissance stucco frieze at the Palazzo del Te in Mantua, Italy. Bouzonnet-Stella was commissioned to create this series by Jean-Baptiste Colbert, advisor to King Louis XIV and "Vice-protecteur" of the Royal Academy of Painting and Sculpture.

Colbert hoped to foster a national art embodying the ideals of ancient Greek and Roman iconography: political strength, military prowess, and intellectual refinement. Prints were an ideal format to circulate this new artistic style throughout France. The first print of the series bears the inscription, "This frieze was made in stucco under the guidance and on the designs of Giulio Romano at the Palazzo del Te in Mantua, engraved by Anthoinette [sic] B. Stella." Just below this inscription is the note, "In Paris at the galleries of the Louvre with the king's privilege."²

Many questions remain about this series. How would the prints have been displayed? And why was the edition in the museum's collection not published until 1787, more than one hundred years after its creation by Bouzonnet-Stella? It was published by François Etienne Joubert, who presumably

acquired the plates from Jacques-François Chéreau, who sold his collection of prints and plates to Joubert in 1787. Upon her death in 1697, Claudine willed the plates and prints that she and her sisters created to a cousin, Michel de Masso. How the plates, Bouzonnet-Stella's *Entrance of the Emperor Sigismond into Mantua* presumably among them, later ended up with Chéreau is not entirely clear.

Impressed?

With much unknown, Bouzonnet-Stella's mastery of skill and technique are nonetheless evident in this extraordinary print series. The clarity of line, articulation of anatomy—both human and equine—and gradations of shade all testify to this artist's abilities, which are as clear today as they must have been in the seventeenth century.

// Virginia Treanor is senior curator at the National Museum of Women in the Arts.

Notes:

1. See Jamie Mulherron, "Claudine Bouzonnet, Jacques Stella and the Pastorales," *Print Quarterly*, vol. 25, no. 4 (December 2008), 393–407; and Anthony Blunt, "Jacques Stella, the de Masso Family and Falsifications of Poussin," *Burlington Magazine*, vol. 116, no. 861, 1974, 745–51.

2. Author's translation.

Impressive: Antoinette Bouzonnet-Stella is organized by the National Museum of Women in the Arts. The exhibition is generously supported by Stephanie Sale and the members of NMWA.



Opposite: Antoinette Bouzonnet-Stella, Plate 25 from *The Entrance of the Emperor Sigismond into Mantua*, 1675 (published by Chez Chéreau et Joubert, Paris, ca. 1787); Engraving on paper, 9 × 19 ½ in.; NMWA, Gift of Chris Petteys

Left: Installation view of *Impressive: Antoinette Bouzonnet-Stella* in NMWA's newly renovated galleries

Calendar

10

// EXHIBITIONS

The Sky's the Limit

Through February 25, 2024

In Focus: Artists at Work

Through September 22, 2024

Hung Liu: Making History

Through October 20, 2024

Impressive: Antoinette Bouzonnet-Stella

Through October 20, 2024

Holding Ground: Artists' Books for the National Museum of Women in the Arts

Through October 20, 2024

Online exhibitions:

Revisit favorite NMWA exhibitions and more at <https://nmwa.org/whats-on/exhibitions/online>.

// KEY

- F** Free
- M** Free for members
- +** Free for members and one guest
- A** Free with admission
- R** Reservations required at <https://nmwa.org>
- O** No reservations required
- E** Exhibition-related program
- V** Virtual/online program (Please note that the time zone for all online programs is Eastern Time)

Automated speech-to-text transcription is enabled during most virtual programs. To request additional access services, please check the online calendar for contact information or email accessibility@nmwa.org. Two weeks' notice is appreciated but not required.

Daily / Weekly / Monthly

For museum admission, advance reservations are strongly suggested. Reserve online at <https://nmwa.org>. Limited walk-up availability.

Free Community Day

FIRST SUNDAYS & SECOND WEDNESDAYS 10 A.M.–5 P.M. // **FMR**

The first Sunday and second Wednesday of each month, NMWA offers free admission to the public. Enjoy current exhibitions and the collection galleries. Please note: advance registration is required, and there is limited walk-up availability.

Open Studio

FIRST SUNDAYS & SECOND WEDNESDAYS 11 A.M.–4 P.M. // **FMOE**

On the first Sunday and second Wednesday of each month during Free Community Days, visit the museum's new studio for drop-in art-making activities inspired by works on view. All ages welcome; children twelve and younger require adult supervision.

Collection Highlights Tour

MOST SUNDAYS, TUESDAYS, & FRIDAYS 2–2:45 P.M. // **MAO**

During these interactive, docent- or staff-led talks, look closely and discuss artworks from the museum's collection. Join as often as you like—tour content varies.

Gallery Talk

MOST WEDNESDAYS 12–12:30 P.M. // **FMOE**

Conversational, thematic, staff-led talks highlight several works on view. Join as often as you like—content varies.

The Bigger Picture

SUNDAYS 2–3:30 P.M. // **R**

Fourth Sundays beginning in January. This new lecture and conversation series shakes up the traditional art historical narrative by exploring art from the sixteenth century to today through the lens of the museum's collection.

NMWA Nights

WEDNESDAYS 5:30–8 P.M. // **R**

Join us on the third Wednesday of each month from January to May for a creative and engaging after-hours experience! Peruse the galleries, grab a cocktail, listen to a performance, join a talk, or participate in art-making activities.

Art Chat @ Five

FRIDAYS 5–5:45 P.M. // **FMREV**

Select Fridays. Jump-start your weekend with art! Join NMWA educators online for informal 45-minute art chats about selected artworks from NMWA's collection.



Visitors enjoy Beatriz Milhazes's *Marola* (2015) in *The Sky's the Limit*

December

- 12/15 Collection Highlights Tour**
FRI 2-2:45 P.M. // **MAO**
- 12/15 Art Chat @ Five**
FRI 5-5:45 P.M. // **FMRV**
- 12/20 Gallery Talk: Collection Sampler**
WED 12-12:30 P.M. // **FMO**
- 12/27 Gallery Talk: Collection Sampler**
WED 12-12:30 P.M. // **FMO**
- 12/29 Collection Highlights Tour**
FRI 2-2:45 P.M. // **MAO**

January

- 1/3 Gallery Talk: *The Sky's the Limit***
WED 12-12:30 P.M. // **FMOE**
- 1/7 Free Community Day**
SUN 10 A.M.-5 P.M. // **FMR**
- 1/7 Open Studio**
SUN 11 A.M.-4 P.M. // **FMOE**
- 1/7 Collection Highlights Tour**
SUN 2-2:45 P.M. // **MAO**
- 1/9 Collection Highlights Tour**
TUE 2-2:45 P.M. // **MAO**
- 1/10 Free Community Day**
WED 10 A.M.-5 P.M. // **FMR**
- 1/10 Open Studio**
WED 11 A.M.-4 P.M. // **FMOE**
- 1/10 Gallery Talk: *Hung Liu: Making History***
WED 12-12:30 P.M. // **FMOE**
- 1/12 Collection Highlights Tour**
FRI 2-2:45 P.M. // **MAO**
- 1/14 Collection Highlights Tour**
SUN 2-2:45 P.M. // **MAO**
- 1/16 Collection Highlights Tour**
TUE 2-2:45 P.M. // **MAO**
- 1/17 New Worlds: Ecology and the Nature of Art**
WED 12-1 P.M. // **MREV**
Join us for a special members-only virtual event: artists in the upcoming exhibition *New Worlds: Women to Watch 2024* discuss how their creative practices respond to themes of ecology, climate change, and sustainability.
- 1/17 Gallery Talk: Collection Sampler**
WED 12-12:30 P.M. // **FMO**



Suzanne Coley, *In Bloom*, 2023; Silkscreen printing, cloth, thread, and plastic, 13 × 10 × 6 in.; NMWA, Gift made possible through the generosity of the artist and a bequest from Marjorie B. Rachlin; On view in *Holding Ground*

- 1/17 NMWA Nights**
WED 5:30-8 P.M. // **R**
Enjoy the first late-hours event in NMWA's renovated building with cocktails, art-making, and more.
\$25 general/\$22 students, seniors, D.C. residents/\$20 members.
- 1/19 Collection Highlights Tour**
FRI 2-2:45 P.M. // **MAO**
- 1/21 Collection Highlights Tour**
SUN 2-2:45 P.M. // **MAO**
- 1/23 Collection Highlights Tour**
TUE 2-2:45 P.M. // **MAO**
- 1/24 Gallery Talk: *The Sky's the Limit***
WED 12-12:30 P.M. // **FMOE**
- 1/26 Collection Highlights Tour**
FRI 2-2:45 P.M. // **MAO**
- 1/26 Art Chat @ Five**
FRI 5-5:45 P.M. // **FMRV**
- 1/28 The Bigger Picture: "Why Have There Been No Great Women Artists?"**
SUN 2-3:30 P.M. // **R**
With a nod to Linda Nochlin's landmark 1971 essay, explore some of the social and political systems that defined the place of women in the history of art for centuries. \$25 general/\$22 students, seniors, D.C. residents/\$20 members.
- 1/28 Collection Highlights Tour**
SUN 2-2:45 P.M. // **MAO**
- 1/30 Collection Highlights Tour**
TUE 2-2:45 P.M. // **MAO**
- 1/31 Gallery Talk: *Holding Ground***
WED 12-12:30 P.M. // **FMOE**

// KEY

F Free	O No reservations required
M Free for members	E Exhibition-related program
+ Free for members and one guest	V Virtual/online program
A Free with admission	(Please note that the time zone for all online programs is Eastern Time)
R Reservations required at https://nmwa.org	

February

- 2/2 Collection Highlights Tour**
FRI 2-2:45 P.M. // **MAO**
- 2/4 Free Community Day**
SUN 10 A.M.-5 P.M. // **FMR**
- 2/4 Open Studio**
SUN 11 A.M.-4 P.M. // **FMOE**
- 2/4 Collection Highlights Tour**
SUN 2-2:45 P.M. // **MAO**
- 2/6 Collection Highlights Tour**
TUE 2-2:45 P.M. // **MAO**
- 2/7 Gallery Talk: Collection Sampler**
WED 12-12:30 P.M. // **FMO**
- 2/9 Collection Highlights Tour**
FRI 2-2:45 P.M. // **MAO**
- 2/10 Firsthand Experience Workshop: Recipe Comics**
SAT 10 A.M.-3 P.M. // **R**
Robin Ha, writer/illustrator of the graphic memoir *Almost American Girl* (2020), teaches participants (ages thirteen and up) the process of selecting and refining personal recipes, drawing them, and creating comic-inspired art. Reservations required. \$25 general/\$22 seniors, students, D.C. residents/\$20 members.
- 2/11 Collection Highlights Tour**
SUN 2-2:45 P.M. // **MAO**
- 2/13 Collection Highlights Tour**
TUE 2-2:45 P.M. // **MAO**
- 2/14 Free Community Day**
WED 10 A.M.-5 P.M. // **FMR**
- 2/14 Open Studio**
WED 11 A.M.-4 P.M. // **FMOE**
- 2/14 Gallery Talk: Impressive: Antoinette Bouzonnet-Stella**
WED 12-12:30 P.M. // **FMOE**



PHOTO BY ELYSE COSGROVE/ASTICO PHOTO

On the first Sunday and second Wednesday of each month, visit NMWA's new studio for art-making activities

- 2/14 New Worlds: Historicisms and Futurisms**
WED 12-1 P.M. // **MREV**
Join us for a special members-only virtual event: artists in the upcoming exhibition *New Worlds: Women to Watch 2024* discuss how they rethink history and imagine the future in their work.
- 2/16 Collection Highlights Tour**
FRI 2-2:45 P.M. // **MAO**
- 2/18 Collection Highlights Tour**
SUN 2-2:45 P.M. // **MAO**
- 2/20 Collection Highlights Tour**
TUE 2-2:45 P.M. // **MAO**
- 2/21 Gallery Talk: Collection Sampler**
WED 12-12:30 P.M. // **FMO**
- 2/21 NMWA Nights**
WED 5:30-8 P.M. // **R**
Enjoy NMWA's new late-hours series with cocktails, art-making, and more. \$25 general/\$22 students, seniors, D.C. residents/\$20 members.
- 2/23 Collection Highlights Tour**
FRI 2-2:45 P.M. // **MAO**
- 2/23 Art Chat @ Five**
FRI 5-5:45 P.M. // **FMRV**
- 2/25 The Bigger Picture: Face to Face**
SUN 2-3:30 P.M. // **R**
Who is present and who is absent from the history of portraiture? Consider portrait artists and their subjects from multiple centuries and discover contemporary artists who engage, disrupt, and extend that legacy. \$25 general/\$22 students, seniors, D.C. residents/\$20 members.
- 2/25 Collection Highlights Tour**
SUN 2-2:45 P.M. // **MAO**
- 2/27 Collection Highlights Tour**
TUE 2-2:45 P.M. // **MAO**
- 2/28 Gallery Talk: Collection Sampler**
WED 12-12:30 P.M. // **FMO**

March

3/1 Collection Highlights Tour

FRI 2-2:45 P.M. // **MAO**

3/3 Free Community Day

SUN 10 A.M.-5 P.M. // **FMR**

3/3 Open Studio

SUN 11 A.M.-4 P.M. // **FMOE**

3/3 Collection Highlights Tour

SUN 2-2:45 P.M. // **MAO**

3/5 Collection Highlights Tour

TUE 2-2:45 P.M. // **MAO**

3/6 Gallery Talk: *Hung Liu: Making History*

WED 12-12:30 P.M. // **FMOE**

3/8 Collection Highlights Tour

FRI 2-2:45 P.M. // **MAO**

3/10 Collection Highlights Tour

SUN 2-2:45 P.M. // **MAO**

3/10 Creative's Keynote: Cecilia Alemani

SUN 4-7 P.M. // **R**

Join us for a conversation with Cecilia Alemani, curator of the 2022 Venice Biennale, who placed women and nonbinary artists at its center. Alemani will reflect on women in the art world, curatorial practices that uplift underrepresented voices, and more. Followed by Sunday Supper. Reservations required. \$40 general/\$37 students, seniors, D.C. residents/\$35 members.

3/12 Collection Highlights Tour

TUE 2-2:45 P.M. // **MAO**

3/13 Free Community Day

WED 10 A.M.-5 P.M. // **FMR**

3/13 Open Studio

SUN 11 A.M.-4 P.M. // **FMOE**

3/13 Gallery Talk: *Holding Ground*

WED 12-12:30 P.M. // **FMOE**

3/13 New Worlds: Technologies

WED 12-1 P.M. // **MREV**

Join us for a special members-only virtual event: artists in the upcoming exhibition *New Worlds: Women to Watch 2024* discuss technological realities and innovative possibilities in their work.

3/15 Collection Highlights Tour

FRI 2-2:45 P.M. // **MAO**

3/17 Collection Highlights Tour

SUN 2-2:45 P.M. // **MAO**

3/19 Collection Highlights Tour

TUE 2-2:45 P.M. // **MAO**

3/20 Gallery Talk: Collection Sampler

WED 12-12:30 P.M. // **FMO**

3/20 NMWA Nights

WED 5:30-8 P.M. // **R**

Enjoy NMWA's new late-hours series with cocktails, art-making, and more. \$25 general/\$22 students, seniors, D.C. residents/\$20 members.

3/22 Collection Highlights Tour

FRI 2-2:45 P.M. // **MAO**

3/22 Art Chat @ Five

FRI 5-5:45 P.M. // **FMRV**

3/24 The Bigger Picture: Object Lessons

SUN 2-3:30 P.M. // **R**

Learn how women helped pioneer the development of the still life genre and how they continue to create imagery that tells stories through the things that humans own, collect, consume, and value. \$25 general/\$22 students, seniors, D.C. residents/\$20 members.

3/24 Collection Highlights Tour

SUN 2-2:45 P.M. // **MAO**

3/26 Collection Highlights Tour

TUE 2-2:45 P.M. // **MAO**

3/27 Gallery Talk: *Hung Liu: Making History*

WED 12-12:30 P.M. // **FMOE**

3/29 Collection Highlights Tour

FRI 2-2:45 P.M. // **MAO**

3/31 Collection Highlights Tour

SUN 2-2:45 P.M. // **MAO**

// Education programming is made possible by the A. James & Alice B. Clark Foundation, with further support provided by the Leo Rosner Foundation and the William Randolph Hearst Foundation. Additional funding is provided by the Harriet E. McNamee Youth Education Fund and William and Christine Leahy.

The Women, Arts, and Social Change public programs initiative is made possible through leadership gifts from Denise Littlefield Sobel and the Davis/Dauray Family Fund, with additional support provided by Anne N. Edwards, the Revada Foundation of the Logan Family, and the Susan and Jim Swartz Public Programs Fund.



Cecilia Alemani will speak on March 10 about curating the 2022 Venice Biennale

FY23 Year in Review

The Road to Reopening

July 1, 2022–June 30, 2023

// FROM THE CHAIR OF THE BOARD & THE DIRECTOR

Dear Members and Friends of NMWA,

The moment has finally arrived! As you know, the museum is once again open to the public. Our top-to-bottom renovation is meeting with widespread acclaim: guests are enjoying the new exhibitions, new studio for art-making, and reimagined spaces including our Performance Hall, Library and Research Center, and Museum Shop. These amenities enhance our programming and provide more comfortable and accessible visitor experiences.

In this section, we invite you to join us in reflecting on the accomplishments and landmarks of the past year. We are truly proud of how much we have achieved in our efforts to champion women artists off-site, online, and even on the building façade. At the same time, we paved the way for reopening, working to prepare exhibitions, publications, events, and programs—and of course the building itself—to welcome you back.

We cannot thank you enough for your partnership. During the years of planning and implementing this renovation, you, our friends and advocates, have been steadfast in supporting the Space to Soar capital campaign as well as the daily operations and programs that make the museum what it is. Your support has enabled our success on all levels. We all feel pride in this moment.

There is still time—until December 31, 2023—to be part of our Space to Soar campaign, as we grow ever closer to completing our fundraising goal and securing the museum's future. We invite you to join us in supporting all that this renovation makes possible!

Winton S. Holladay
Chair of the Board

Susan Fisher Sterling
The Alice West Director

During the recent year, the museum focused on completing our top-to-bottom renovation and preparing to reopen—all while continuing our work to champion women artists. Staff offered popular virtual and in-person programs during the building closure. One highlight of our art offerings, an installation on the museum's façade by Katharina Cibulka, prompted passersby to think deeply about gender equity. After we announced a reopening date, plans for this long-awaited occasion kicked into high gear.

Year at a glance:

- Save the date! The announcement of the museum's reopening date—October 21, 2023—launched a wave of press coverage and public enthusiasm.
- Dozens of works of art from NMWA's collection remained available to the public, through extended loans to the National Gallery of Art and the Baltimore Museum of Art and in special exhibitions around the world.
- Virtual field trips for K–12 and college students reached 442 learners.
- The Library and Research Center began moving thousands of books and archival documents back into the freshly renovated and reconfigured library.

Art Without Walls

While the museum was closed, NMWA's art and programs continued to thrive. The second iteration of the museum's *Lookout* public art series transformed construction scaffolding into a large-scale canvas. On view from October 24, 2022, to April 30, 2023, *Lookout: Katharina Cibulka* presented one of the Austrian artist's monumental "SOLANGE" (German for "as long as") works, a series addressing gender-based inequity and power structures.



Katharina Cibulka stands in front of *SOLANGE #27* (2022), her *Lookout* installation at NWWA

“The construction site is in process. And society is under construction too, so it’s a nice canvas.”

KATHARINA CIBULKA, ON HER “SOLANGE”
WORK FOR NMWA

In vivid pink tulle on white mesh fabric, Cibulka and her team cross-stitched, “As long as generations change but our struggles stay the same, I will be a feminist.” NMWA’s installation marked the artist’s first in the U.S.; it was also her largest at nearly 7,000 square feet. Cibulka worked with NMWA to share her art, recording an audio guide and joining as a special guest on an episode of NMWA xChange. Two Instagram posts featuring the installation were the museum’s most popular of the year, amassing 10,875 likes cumulatively.

Through our **Collection on the Move** initiative, twenty-three artworks from the collection appeared at partner institutions in our region. At the National Gallery of Art and Baltimore Museum of Art, visitors could view NMWA favorites by Clara Peeters, Eva Hesse, Frida Kahlo, Amy Sherald, and many others. Notable works also toured the world in special exhibitions. Highlights included Alice Neel’s *T.B. Harlem* (1940) in two major special exhibitions on the artist, and Lavinia Fontana’s *Portrait of Costanza Alidosi* (ca. 1595) traveling to the National Gallery of Ireland, where it was part of the first exhibition on the artist in nearly thirty years.

Online and Off-site Engagement

Throughout the year, museum supporters connected with NMWA’s innovative programs and events both virtually and in person.

- Art Chat @ 5 reached nearly 1,100 participants over 38 events. Attendees hailed from 33 U.S. states, Washington, D.C., Puerto Rico, Canada, Bermuda, Brazil, Germany, Mexico, and England.
- NMWA xChange reached 300 viewers across eight episodes featuring artists and curators as well as women from NMWA’s renovation team.
- Book Club brought 25 readers together to discuss Natasha Gordon-Chipembere’s *Finding La Negrita* (2022), and 30 for Addie Tsai’s *Unwieldy Creatures* (2022).

Educators reached audiences virtually through collection highlights talks, Slow Art Day, and a month-long residency with Visual Thinking Strategies’ Look Club, in which they engaged 186 attendees. NMWA also held programs in partnership with

the Art Gallery of Ontario; Baltimore Museum of Art; Gadsden Arts Center & Museum, Florida; and National Gallery of Ireland.

At the third virtual Educator Summer Camp, educators gathered for professional development and fun:

- More than 300 educators attended from 26 states, Washington, D.C., and five other countries: Canada, Bermuda, Iran, Italy, and England.
- During eight sessions in July, educators discovered artists in NMWA’s collection and enjoyed hands-on workshops.

“The NMWA Residency was an absolute joy to be part of and one of the most robust VTS Look Club Online series in its 3+ year existence.”

EM MILLER, VISUAL THINKING STRATEGIES DIRECTOR

The **Women, Arts, and Social Change** (WASC) public programs initiative continued highlighting the power of women and the arts as catalysts for change. Participants connected through its signature Fresh Talk program, the musical meetup series The Tea, and more.

“Fresh Talk: Art and the Ecstatic” featured artists Asha Elana Casey, Oletha DeVane, and Consuelo Jimenez Underwood discussing their work documenting the divine. At “Fresh Talk: Work on the Walls,” NMWA hosted mural artist MISS CHELOVE, visual artist and filmmaker Michelle Angela Ortiz, and mixed-media artist Nekisha Durrett as they discussed their public art practices.

More than 130 attendees tuned in for “Cultural Capital: A Celebration of Black Girls’ Childhood,” a special partnership with the Georgetown Law Center on Poverty and Inequality’s Initiative on Gender Justice and Opportunity. It featured Marley Dias, founder of #1000BlackGirlBooks; poet Logan Green; and artist Scheherazade Tillet.

NMWA’s digital engagement helped our art and programs reach audiences near and far.

- The museum’s website garnered more than 1.3 million page views in 2023.
- NMWA’s social media accounts continued to gain followers, increasing by 20% on Facebook and 6% on Instagram.
- NMWA launched accounts on the platforms TikTok and Threads. Already, on TikTok, 19,600 people

PHOTO BY SANGHA MCBURNIE



PHOTO BY ADRIENNE L. GAYOSO, NMWA

Clockwise from top left: At "Fresh Talk: Work on the Walls," artist and filmmaker Michelle Angela Ortiz (left) discusses her practice along with mixed-media artist Nekisha Durrett, mural artist MISS CHELOVE, and NMWA Director of Public Programs Melani N. Douglass; Oletha DeVane discusses her work in "Fresh Talk: Art and the Ecstatic"; Docents joined NMWA educators in the new galleries for training; Dianne Smith discusses her work in "NMWA xChange: Past, Present, Future with Dianne Smith"

(and counting) have viewed our first nine videos. The museum has more than 14,200 followers on Threads.

The museum continued a strong partnership with Google Arts & Culture by producing two new multimedia stories for Google's thematic collections, including a spotlight on Jaune Quick-to-See Smith for Google's Native American Heritage Month feature. NMWA was also one of the first museums to create a virtual pocket gallery for the debut of the platform.

The 2023 theme for NMWA's **#5WomenArtists** social media campaign was "art+, fine arts and beyond." It focused on gender equity in arts-related fields such as architecture, design, and film. We highlighted figures within these disciplines on social media and the *Broad Strokes* blog, and #5WomenArtists reached 6.3 million people.

Ready, Set . . .

In the months before the grand reopening, we prepared to welcome and wow visitors. Collection works were readied for the spotlight, and as construction in the galleries neared completion, nearly 200 returned to the museum for installation.

The museum prepared to publish a new catalogue, *National Museum of Women in the Arts: Collection Highlights*,

in celebration of the reopening. Created in partnership with Hirmer Publishers, the hardcover volume features more than 180 works of art, including many recent acquisitions. With essays by nearly fifty artists, curators, and writers, along with a lively, thematic design, the book helps readers discover connections among great works by women artists.

A new class of docents busily prepared to greet visitors. NMWA educators engaged docents in fifty-four training sessions, covering topics such as Visual Thinking Strategies, verbal descriptions, improv at the museum, and Gender 101. These museum ambassadors will lead tours and introduce the new collection installation, in which nearly 40% of the works have never been on view at NMWA before.

Brick by Brick

The construction team made great strides in the museum's renovation work. While they preserved historic details, crews overhauled the building's technical systems and finishes, and the "new NMWA" began to emerge!

- Enlarged galleries—now 15% more space for art! Plus, galleries' new infrastructure can better accommodate multimedia installations as well as monumental sculptures like those on view in *The Sky's the Limit*.



NMWA Director Susan Fisher Sterling (center) with many of the women on the renovation project team in the museum's Performance Hall during construction

- Brand-new spaces: The Learning Commons features the new exhibition galleries; the Library and Research Center; and the new studio, which provides flexible space to host hands-on workshops, art-making sessions, and programs.
- Improved visitor experience through ADA accessibility and new amenities: The museum added a dedicated nursing lounge, an entrance ramp that provides an additional accessible path for visitors, and elevators that reach every floor.

In choosing architects, engineers, and other leaders on the renovation project, NMWA selected experienced partners—many of them women—across these stereotypically male-dominated professions. We celebrated some of these women when conservator Wendy Jessup and architects Cara Versace and Sandra Vicchio joined a special episode of NMWA xChange, “Women Building Better.”

In February, a hard-hat press tour of the building led to enthusiastic coverage in the *Art Newspaper*, *Washingtonian*, *Washington City Paper*, and other outlets. *People* magazine included NMWA’s reopening on its annual “100 Reasons to Love America” list.

Thank you!

As we progressed toward the finish line of our ambitious renovation, your support and partnership made an amazing impact. We welcomed more than 1,300 new members as we prepared for the museum’s reopening, all while keeping the support of over 3,000 charter members, who have been with us for more than thirty years.

Now, with the building reopened and an exciting slate of programs and exhibitions planned for the coming seasons, we invite you to help us shape NMWA’s future.

// Alicia Gregory is assistant editor at the National Museum of Women in the Arts. Staff from across the institution contributed to this report.

// NATIONAL AND INTERNATIONAL PROGRAMS

During the recent fiscal year, the museum’s thirty-one national and international outreach committees shared NMWA’s mission around the world. We welcomed the new Ireland Committee and began development of the South Korea Committee.

NMWA announced *New Worlds: Women to Watch 2024*, the next installment in the exhibition series that features emerging and underrepresented women artists from regions where NMWA has committees. Many groups held exhibitions, programs, and events as part of the initiative. Highlights include:

- **The Arkansas Committee** launched their traveling exhibition to Fort Smith, El Dorado, Pine Bluff, and Conway.
- **UK Friends of NMWA** opened their exhibition at Christie’s King Street.
- **San Francisco Advocacy for NMWA** opened their exhibition at the California College of the Arts.
- **The Massachusetts Committee** opened their exhibition at Gallery Kayafas in Boston. They also organized a youth art-making workshop and exhibition visit with Artward Bound, an organization that supports the next generation of creative professionals of color.
- **The Japan Committee** held a panel on gender equity in Japan and the U.S. art scenes at the Tokyo University of the Arts, which featured former Mori Museum curator Natsumi Araki, researcher and writer Hiroki Yamamoto, and NMWA Director Susan Fisher Sterling. The committee also opened a multi-venue exhibition of *Women to Watch* nominees’ work.
- **The Georgia Committee** opened their exhibition at the Atlanta Contemporary and hosted an artist talk.
- **El Capítulo Chileno** held an exhibition and artist talk in partnership with Corporación Cultural de Lo Barnechea.
- **Les Amis du NMWA** held an artist event at the 2022 Paris Photo fair.
- **The Wyoming Committee** commissioned a documentary film spotlighting their nominated artists (www.wynmwa.org/film) and held a film screening and artist panel.
- **The Canada Committee** organized a panel on gender inequity in the arts at the Art Gallery of Ontario (AGO) in partnership with AGO Women’s Art Initiative. AGO’s Michael and Sonja Koerner Director and CEO Stephan Jost and Susan Fisher Sterling discussed gender equity initiatives.

Financial Statements

Statements of Financial Position	FY23	FY22
<i>Assets</i>		
Cash	\$ 13,869,053	\$ 42,938,124
Other current	3,758,886	3,290,884
Total current assets	17,627,939	46,229,008
Net property and equipment	57,386,105	24,938,923
Investments	94,587,499	67,005,090
Net Pledges Receivable	2,464,030	5,726,039
<i>Total Assets</i>	<u>\$ 172,065,573</u>	<u>\$ 143,899,060</u>
<i>Liabilities and net assets</i>		
Payables accruals and deposits	\$ 6,795,201	\$ 4,445,745
Long term liabilities	11,006,064	2,784,560
Total liabilities	17,801,265	7,230,305
Net assets	154,264,308	136,668,755
<i>Total Liabilities and Net Assets</i>	<u>\$ 172,065,573</u>	<u>\$ 143,899,060</u>
Statements of Activities	FY23	FY22
<i>Support and revenue:</i>		
Grants and contributions	\$ 21,495,800	\$ 23,742,800
Membership Income	1,189,372	1,376,584
Earned Income	533,058	734,924
Net Investment Income	6,046,994	(6,019,369)
Total support and revenue	29,265,224	19,834,939
<i>Expenses:</i>		
Program services	7,190,729	5,587,111
Supporting services	3,775,244	2,881,734
Cost of sales and auxiliary activities	703,698	1,109,268
Total expenses	11,669,671	9,578,113
Change in net assets before other item	17,595,553	10,256,826
Forgiveness of Debt	-	-
Change in net assets	17,595,553	10,256,826
Net assets, beginning of year	136,668,755	126,411,929
Net assets, end of year	<u>\$ 154,264,308</u>	<u>\$ 136,668,755</u>
Statements of Cash Flows	FY23	FY22
<i>Cash flows from operating activities:</i>		
Cash received from donors	\$ 23,285,936	\$ 26,605,405
Cash received from program fees and earned income	329,970	439,617
Cash received from membership and dues	1,405,101	1,541,566
Cash payments to employees	(4,221,921)	(4,867,604)
Cash payments to vendors	(36,780,803)	(16,189,028)
Net cash (used) or provided by operating activities	<u>(15,981,717)</u>	<u>7,529,956</u>
<i>Cash flows from investing activities</i>		
Cash received from investment income	(21,316,664)	3,328,778
Cash payments for investment costs	(198,590)	(333,467)
Net cash (used) or provided by investing activities	<u>(21,515,254)</u>	<u>2,995,311</u>
<i>Cash flows from financing activities:</i>		
Cash received from borrowing	8,427,900	3,091,920
Cash payment of bond fees	-	(411,230)
Net cash (used) or provided by financing activities	<u>8,427,900</u>	<u>2,680,690</u>
Net increase in cash and cash equivalents	(29,069,071)	13,205,957
Cash and cash equivalents at beginning of the year	42,938,124	29,732,167
Cash and cash equivalents, end of year	<u>\$ 13,869,053</u>	<u>\$ 42,938,124</u>

*This information has been derived from the financial statements audited by GRF CPAs & Advisors

Highlights from the Past Year

// Kathryn Wat and
Virginia Treanor

During the fiscal year that ended in June 2023, major acquisitions enriched the museum's collection. New works include photographs by Jessie Tarbox Beals, Lois Greenfield, Erica Baum, Angèle Etoundi Essamba, and Ann Hamilton; a drawing by Julie Arriola; and sculpture and mixed-media works by Lara Favaretto. The museum also acquired works by artists featured in current exhibitions, including Hung Liu and Beatriz Milhazes. Curators are excited and inspired to spotlight these works, and the others highlighted here, in NMWA's newly renovated galleries in the coming months and years.

Lalla Essaydi

Twenty-one photographs by Lalla Essaydi (b. 1956) include prints from major bodies of work in the artist's oeuvre. The recently donated works illuminate Essaydi's conviction that artistic representation powerfully shapes identity—and identity politics. Her images of women's bodies covered in calligraphy and draped in tapestries made from brass bullet casings push against stereotypes of Muslim womanhood and Islamic culture as well as Orientalist fantasies. Born in Morocco and trained in France and the U.S., Essaydi developed a unique practice that involves costuming, body art, and the crafting of intricate tableaux.

Lalla Essaydi, *Dancer #1*, 2009;
Chromogenic color print, 30 × 24 in.;
NMWA, Gift from the collection
of Jeffrey Hugh Newman

In several of her series, women's skin, clothing, and the surfaces surrounding them are covered in calligraphy drawn with henna. Arabic calligraphy is traditionally taught only to males, while henna is conventionally regarded as a feminine craft. Essaydi's calligraphy composes

a poetic text that details the artist's and her models' experiences as women.

NMWA also owns a major triptych by Essaydi, *Bullets Revisited #3* (2012), currently on view. The museum acquired it after the artist was featured in the 2016 exhibition *She Who Tells a Story: Women*

Photographers from Iran and the Arab World.

Niki de Saint Phalle

Visitors to NMWA's renovated collection galleries are greeted by an exuberant, sixty-one-inch-high sculpture, *Pregnant Nana* (1995), by Niki de Saint Phalle (1930–2002). From the



Niki de Saint Phalle, *Tarot Garden*, 1991; Lithograph, 23 ¾ × 31 ½ in.; NMWA, Gift of the Niki Charitable Art Foundation

late 1960s onward, the prolific artist expanded her practice from sculpture, performance, and installation to include prints, books, films, clothing, jewelry, and even her own perfume. Saint Phalle often sold prints and multiples to help finance her grand installation projects, such as a sculpture garden that she constructed over many years in the hills of Tuscany.

An expansive gift of prints from the foundation that maintains the artist's estate reflects the socially conscious subjects that Saint Phalle explored, including women's rights, racial justice, the HIV/AIDS crisis, climate change, and gun control, as well as the twenty-two Major Arcana of the tarot deck. The artist wrote and drew continuously, and the prints in this donation feature Saint Phalle's words alongside her drawings, with her characteristic curving, looping lines and bright colors.

These prints join three sculptures and two multiples in NMWA's collection. The museum has long highlighted Saint Phalle's art, as several of her outdoor sculptures were featured in NMWA's inaugural



The museum's collection grew by 128 works during the recent year: 77 photographs, 41 prints, 4 sculptures, 3 mixed-media works, 1 video, 1 painting, and 1 drawing.

installation of the New York Avenue Sculpture Project (2008–10).

Goldschmied & Chiari

Contemporary art often references the art of the past. The Italian duo Goldschmied & Chiari (Sara Goldschmied, b. 1975, and Eleonora Chiari, b. 1971) created the photograph *Nymphaeas #12* (2007) as a pastiche of Claude Monet's paintings of water lilies, one of the most iconic series in Western art. They were interested in subverting

the Impressionist's idyllic representation of nature, as they question concepts such as "natural," "cultural," and "artificial." Goldschmied & Chiari present a natural riverscape where the prettiest elements are, upon inspection, pieces of litter crafted to resemble floating lilies, upending our notion of litter spoiling the scenery.

This photograph was featured in the NMWA exhibition *Organic Matters: Women to Watch 2015*, in which the duo represented the museum's committee in Italy. It was recently donated to NMWA's collection along with three lightbox works by Goldschmied & Chiari—together, these are the first works by the duo in NMWA's collection.

// Kathryn Wat is deputy director/chief curator and Virginia Treanor is senior curator at the National Museum of Women in the Arts.

Goldschmied & Chiari, *Nymphaeas #12*, 2007; Lambda print, 49 ¾ × 131 ¾ in.; NMWA, Gift of Tony Podesta Collection



Space to Soar

22



PHOTO BY ELYSE COSGROVE/ASTCO PHOTO

D.C. Mayor Muriel Bowser; NMWA Trustee Gina F. Adams; Board Chair Winton Holladay; Board President Susan Goldberg, NMWA Director Susan Fisher Sterling; and Larry Di Rita of Bank of America of Greater Washington, sponsor of the public Grand Reopening day, cut the ribbon to open NMWA to visitors

After years of preparation, planning, and construction, NMWA's doors reopened to the public on October 21, to wide acclaim and enthusiastic crowds. We thank the extraordinary friends of the museum whose donations and pledges made this historic project possible.

Space to Soar Capital Campaign

\$15 million+

Wilhelmina C. and
Wallace F. Holladay, Sr.*

\$5–\$14.9 million

Gloria and Dan Logan/Revada
Foundation
Jacqueline Badger Mars

\$2–\$4.9 million

Marcia Myers Carlucci
Betty Boyd Dettre*
Events DC
Ann M. Farley Trust
Denise Littlefield Sobel
MaryRoss Taylor

\$1–\$1.9 million

Winton and Hap Holladay
Clara M. Lovett
Marlene A. Malek

Estate of Evelyn B. Metzger
Sue J. Henry and Carter G. Phillips
J. Christopher and Anne N. Reyes
Foundation

San Francisco Advocacy Group
Dr. Alejandra Segura
Susan and Jim Swartz
The Texas Committee
Estate of Susan Wisherd

\$500,000–\$999,999

David Boies and Jonathan Schiller
Mary Lou Dauray
DC Commission on the Arts
and Humanities
Martha Lyn Dippell and Daniel L.
Korengold
Cindy and Evan Jones
Fred M. Levin in memory of Nancy
Livingston Levin
The Honorable Mary V. Mochary
Sarah and Ross Perot Jr.

Lucy S. Rhame
George and Patti White

\$250,000–\$499,999

Nancy and Marc Duber
Elva Ferrari-Graham
Jamie Gorelick and Richard Waldhorn
Institute of Museum and Library
Services
Gloria Pieretti* in honor of the Testolin
Pieretti Family
Linda Rabbitt and John Whalen Family
Foundation
Sheila and Rick Shaffer
Geri O'Toole Skirkanich
Christine Suppes
Alice and Gordon* West Jr.

\$101,000–\$249,999

M. A. Ruda and Peter J. P. Brickfield*
Charlotte Forster
Georgia Committee of NMWA
Anjali and Arun Gupta
Nancy Wood Moorman
Amanda and Curtis Polk
Laurel and John Rafter
Tara Rudman
Jayne Visser and Kristin Smith
Dana* and Jack Snyder
Susan and Scott Sterling

\$100,000

FedEx/Gina Adams
Janice and Harold L.* Adams
Arkansas State Committee
Amy and Bret Baier

Grace Bender
Charlotte Clay Buxton and Michael
Buxton
The Morris and Gwendolyn Cafritz
Foundation
Lorna Meyer Calas and Dennis Calas
Andrea and Richard Catania
Evonne C. and Robert T. Connolly, II
Ashley Davis and Joel Frushone
Lisa and Porter Dawson
Anne N. Edwards
Charles and Lisa Claudy Fleischman
Family Fund
Helen Frankenthaler Foundation
Belinda de Gaudemar
Pamela Gwaltney
Laurie Sands Harrison
The Hayes Foundation
Diane Casey-Landry and Brock Landry
Mary Ann and Allen Lassiter
Lugano Diamonds
Kristen and George Lund
Bonnie McElveen-Hunter
Morgan Stanley
Northern Trust Company
Ohio Advisory Group
Kay Woodward Olson
Tony T. and Trisja Malisoff Podesta
Lucretia Adymy Risoleo and Robert
Risoleo
Stephanie Wyndam Sale
Jordan Schnitzer Family Foundation in
Memory of Arlene Schnitzer
Karen and William Sonneborn
Kathleen Elizabeth Springhorn

Christoph and Pamela Stanger
Roger and Nancy Nelson Stevenson
Josephine L. and Thomas D.* Stribling
Leo Rosner Foundation/Bill Robbins
Judy and Charles Tate
Deborah Dunklin Tipton

\$50,000–\$99,999

Bank of America of Greater Washington
Deborah G. Carstens
Robin and Jay Hammer
Mr. and Mrs. Michael Reed Miller
Julie Packard
Jean Hall and Thomas D. Rutherford, Jr.
Beth W. Newburger Schwartz
Patti Amanda and Bruce Spivey
UK Friends of NMWA
Marichu C. Valencia and Donald J. Puglisi
Amy Weiss and Peter J. Kadzik

\$25,000–\$49,999

Gail D. Bassin
Joan Bialek and Louis Levitt
Deborah Buck
Marcy and Neil Cohen
Robyn D. Collins
Susan Goldberg and Geoffrey Etnire
Jan Jessup
Alice D. Kaplan
Mr. and Mrs. Jim C. Langdon
Marcia MacArthur
Priscilla W. and Joe R. Martin
Robin Rosa Laub
Bonnie Loeb
Angela LoRé
Lowe Foundation
Dee Ann McIntyre
Mid-Atlantic Committee of NMWA

Monica O'Neill
Laura Perkins
Margaret H. and Jim Perkins
Mary Poelzlbauer
Alice M. Starr
Brooke and Heyward Taylor
Frances Luessenhop Usher
Sara M. and Michelle Vance Waddell
Courtney Johnson Walker
Velda Warner
Daisy Sloan White
Emily Gay* and Neville Gay Williams
Carolyn and John Young

\$10,000–\$24,999

Anonymous (4)
Kathe Hicks Albrecht and Mark J. Albrecht
Jean and Clyde Alexander
Helen Brown Bechtel
Arlene Begelman
Katherine and David Bradley
Nancy Taylor Bubes and Alan Bubes
Lisa Cannon and Charles Edison Taylor
Rose Carter
Clark-Winchcole Foundation
Donna Paolino Coia and Arthur Coia in memory of Carol Lascaris
Constance M. Cooper Charitable Foundation
Lizette Corro
Mrs. and Mr. Barbara Cox
Elizabeth Crane
Lynn Finesilver Crystal
Liz and Tim Cullen
John and Brittain Damgard
Susan and Frank Dunley
Karyn Frist
Susan Gage

Marguerite F. Godbold
Carol Brown Goldberg and Henry Goldberg
Ann K. Gunn
Ilene and Jeffrey Gutman
Lorraine Gyauch
Adrienne and Bill Hanna
Madge Green Henry
Bob and Betsy Huffman
Japan Committee of NMWA
Sally L. Jones
Ellen Stirn Mavec
Cynthia Adler McKee
Amy Shelton McNutt Charitable Trust
Leila W. Mischer
Mary Mocas and Marvin Tseu
Elizabeth and Chuck Nash
Carol and Gerry Parker
The Mary Potishman Lard Trust
Mary Lynn Reese
Jocelyn Selig
Kathy Sierra
Dot and Ned Snyder
Sony Corporation of America Foundation
Sara Steinfeld
Jessica S. and Louis Sterchi
Annie Simonian Totah
Sarah Bucknell Treco
Charlotte and Paul Tripplehorn
Harriet L. Warm
Tamara White
Betty Bentsen Winn
Jean and Donald Wolf

\$1,000–\$9,999

Anonymous (3)
Ruth and Sam Alward
Susan and Ron Antinori
Alexandra Armstrong

Susan Ascher and Paul Kalb
Jaquita Ball
Virginia Banchoff
Cynthia Dahlin and Ron Barusch
Victoria and James Bell
Joan Benedetti
Elizabeth Birka-White
Kathryn Bonansinga
Leonie M. and John R. Brinkema
Terry Brosh
Laura Brouse-Long
Margaret C. Boyce Brown
Moyra Byrne
Kaaren Cabraja
Diana Carsey
Shelley Carton
Nancy Clark
Marian Cohen
Donna Collins
Beth Colocci
Valerie Corvin
Lorna Cowher
Loretta Dakin
Dr. Beverly Dale
Tommye Lou Davis
Alexis Deutsch-Adler
Marilena Disilvio
Helen DuBois
Elizabeth Duggal and Alain Taghipour
Kenneth P. Dutter
Doug and Joyce Eagles
Ricky Eatherly
Ginny Feldman
Maribeth Frazer and John B. Frazer, Jr.
Tracy Freedman
Kathryn Fritz Dixon
Michele Garside, PhD
Patricia Mast and Kenneth S. George



Left: NMWA Trustee and honorary campaign chair Jacqueline Badger Mars and NMWA Trustee and event chair Cindy Jones celebrate the Grand Reopening

Above: D.C. Mayor Muriel Bowser speaks to attendees at NMWA's ribbon-cutting ceremony on October 21

Kathleen A. Guinn
 Lillian Hagen
 June Hajjar
 Christine Hansen
 Fruzsina M. Harsanyi and Raymond Garcia*
 Elizabeth Hawthorne
 Adrienne Hensley
 Barbara Holdridge
 Marissa A. and James Huttinger
 Debra Bennett Jackson
 Derek and Gillian Jackson
 Marlene Johnson
 Pamela C. Johnson and Wesley King
 Martha Jones
 Ellen Jozoff
 Noriko Kashiwagi
 R. Sue Kaufman
 Susan Kennedy and Julie Hewitt
 Elizabeth and James Kiernan
 Arlene Fine Klepper and Martin Klepper
 Kay Lachter
 Jana Lawton
 William R. and Christine M. Leahy
 Arlene Leis
 Herbert and Wilda Lewis
 The Llellanie S. Orcutt Fdn. Trust
 Jeanne Loveland
 Joanne Lyman
 Nannette Maciejunes
 Frances MacIntyre
 Osborne Phinizy Mackie and Dr. Morgan D. Delaney
 Jane Maland
 Rebecca Matejcek-Chang
 Marsha Mateyka
 Houston Matthews
 Kate B. Maurras
 Iris McWilliams
 Toni Ratner Miller
 Joyce Henderson Mims
 Anu Mitra
 Irene Natividad
 Glenda Oakley
 James O'Donnell and Ann Okerson
 Karen Ross and John O. Oswalt
 Jill Over
 Jeanne Parham
 Pamela J. Parizek
 Joanne Pekarik
 Dede and Tom Petri
 Diane and Carolyn Plank
 Sue Plattner-Smith
 Phoebe Marlys Pollinger
 Dr. Michael and Mrs. Mahy
 Polymeropoulos
 Stanley Poss
 Amelia Preece
 Jacqueline L. Quillen*
 Hedy M. Ratner
 Elizabeth S. Ray
 Anne and Steve Reed
 Barbara Richter
 Sandra Riggs
 Mr. Markley Roberts
 Elizabeth Robinson
 Michaela and Robert Robinson
 Joy Roller
 Aleza and Joe Rosenberg

Elizabeth L. Rossman
 Kitty Rubenstein
 Genevieve McSweeney and Frederick Ryan
 Mary Jane Rynd
 Julie A. Sapone
 Barbara Satterfield
 Anikó G. Schott
 Bonnie Schwartz
 Pamela and Tom Sheffield
 Jennifer L. Sigler
 Lera Smith, Ph.D. and Steven Smith
 Linda Watkins Sorkin
 Alyssa K. Mertz and Susan K. Sovel
 Joanne Stringer
 Douglas K. Struck
 Kim and Sarah Baldwin Swig
 Sarah Shell Teague
 Mary and Charles Teeple
 Margaret Thorne
 Patricia and Ellen Tice
 Demara Titzer
 Krystyna Wasserman
 Tela Arrington Webb
 Tara Beauregard Whitbeck
 B. Joan White
 Marie Wilkie
 Pamela and George Willeford
 Mara Witzling
 Barbara Wolanin

Additional Supporters

Anonymous (2), Murray Abramsky, Susan Addiss, Eva Adler, Elaine and V. Agather, Eleanor Allen, Jennifer Allport-Anderson, Constance Allquist, Sandra Alstadt, Kate Amend, Vanessa Anderson, Ms. Khristie Andrus, R. Victoria Arana-Robinson, Kathleen Arleth, Charlotte and Walter L. Arnstein, Phyllis Asnien, Pam Augspurger, Diane Azzolin, R. Baab, Nancy Baillie, Margaret E. Baird, Joanne Baizer, Cynthia Baker, Therese Baker-Degler, Jean Galloway Ball, Luke Balistreri, Maureen Banks, Sherrie Barr, Roann Barris, Ghada Batrouni, Barbara Baugh, Constance M. Baugh, Judith Bay, Karen Bearor, Marty Beidler, Harold Belcher, Patricia Belknap, Joy Belluzzi, Allison Berman, Karen D. Berman, Wendy Bidstrup, Katharine Bigelow, Jenny Bilfield, Joann Bingham, Mrs. Charlotte Bird, Carol Bivins, Leslie Blakemore, Blazin, Cookie Bloom, Odette Blum, Libby Balter Blume, Diane H. Blumenthal, Sharon Kesterson Bollen, Carrie Bolster, Pat Bonner, Louise Borke, Audrey L. Bornstein, Judy Boroskin, Nahid Boustani, Jane C. Bowen, Judith B. Bowman, Diann Bowoman, Arline Boyce, Christina Katherine Anne Boyce, Barbara Boyer, Kathryn Boylan, Kathleen Boyle, Bonnie Brae, Anne M. Breen, Sarah Bro, Clara Brock, Catherine A. Broderick, Dr. Thomas R. Broker, Julia Brouhard, Lorraine Brown, Rhonda Brown, Ruth Brown, Shelagh Casey Brown, Marty Brumback, Irene Buck, Katherine Bucknell Maguire, Elaine M. Bukowicki, Eugenia Burkes, Sadie Butler, Caron Cadle and Lesley Gamble, Ms. Maurine Canarsky, Susan Carbo, Judy Card, Bonnie Carpenter, Dorothy Cartwright, Janice Cavanaugh, Carole Cavanaugh-Fettig, Blanca Cedillos, Elizabeth J. Chaldekis, Kathrin Cheema, Sharon Cherry, Lucy Childs, Elinor Christiansen, Joan and Anthony Churchill, Tamara Churns-Gilman, Mary Ellen Clark, Joan Clarke, Susan Clarke-Mahoney and Martin Mahoney, Maggie Clarkson, Robyn Clawson, Ellen Cleveland, Tara Balfe Clifford, Karen L. Clute, Mary and Jim Cook, Carol Cooke, Charles N. Cooper, Mary Cooper, Karen Cordero, Marica Cox Mitchell, Myrna Curtis, Ms. Donna J. Danielson, Jane Darby, L. Karen Darner, Charlotte M. Davis, Ed.D., Julia Dawson, Judith Degraff, Eloisa C. De Luna, Lee Ann De Reus, Sheila Delaney, Carol A. Delany, Barbara Denrich, Linda J. Derbyshire, Pam Derrham, Carol Ann Detlef, Sanna Deutsch, Anne Devaney, C. Diehl, Anne Michelle Dobrzynski, Beverly Doggrell, Dina Dorich, Pat Dorman, Ann Dougherty, Eileen Doughty, Anna Doyle, Genevieve Driver, Esther Drozner, Jacquolyn Duerr, Eileen Duggan, Janet Duggins, Gail Dunlap, Kelly and Louise Dunn, Fynnette Eaton, Amy L. Edwards, Betty Bivins Edwards, Jola Edwards, Maggie Edwards, Marion Ehrich, Loryann M. Eis, Susanne E. and Clayton W. Eisinger, Eddie and Rachel Eitches, Janet and Tom Elkins, Diane G. Elliott, Robert and Marilyn Ellsworth, MaryLe Emmett, Meron Engida, Molly Engle, Judith W. Ennis, Maria Epes, Jean Etsinger, Robert and Della Ewart, Lexie M. Evans, Noela N. Evans, Myrna Fawcett, Krayna Feinberg, Christine Fethes-Connolly, Kimberly Finger, Lois Fink, Ms. Maria C. Fiordellisi, Kristine Fisher, Mr. Brian Flaherty, Susan Fleischman, Margaret Fouse, Ms. Susan A. Fox, Nancy Fox, Wendy J. Frances, Elaine Franco, Edie Fraser, Becky Frehse, Elizabeth French, Barbara Friedell, Raymond K. Fudge, Patricia Funaro, Odelia Funke, Jane S. Gabin, Deborah Gaensbauer, Julie Galbierz, Lesley Gamble, Joyce and Roy Gamse, Barbara Gartley, Marcy Gefter, Lorna Geiler, Phyllis J. Geller, Ayanah S. George, Sheila Gershen, Maria Gharakhanian, Priscilla Gibbs, Mary C. Giglio and Peter Ciesielski, Mary Gillis, Valerie Gladwell, Gladys Glassman, Mr. and Mrs. Joseph F. Gleason, Jane Godfrey, Gwenn Goebel, Andrea Goldberg, Marilyn Goldfeather, Gailmarie Goldrick and Frank Distasio,

Gordon and Nancy Goodman, Sandi-Jo Gordon, Denise Graffeo, Cheryl Granrose, Sharon Grant, Dean A. and Lisa A. Graves, Norma L. Greene, John Griffin, Gail Group, Diane M. Gulseth, Kari Gunter-Seymour, Jane E. Gustafson, Karen Marie Gutfreund, Lawrence Simpson Guthrie, Deborah A. Haggard-Rosse, Trudi B. Hahn, Jolynda H. and David M. Halinski, Melanie E. Hall, Jo Hamby, Catherine Hamel, Linnea Hamer, John Hanks, Jennifer Hardy, Kaaren Hardy, Harriett J. Harper, Patricia Harrington, Mary Elizabeth Harwood, Jacqueline Haveman, Mary J. Hayden and Carla J. Tomaso, Betty and Tom Hays, Mrs. Gretchen L. Hays, Kathleen Hayes, Jo Ann Hearld, Joy Heaton, Mira Hecht, Lisa C. Heilman, Sara Heineke, Mary Heiss and Harold Dorenbecher, Camille Helminski, Susan Hengelsberg, Nancy Henningsen, Mariam Henson, Connie Herring, Jay Herson, Mary W. Hewlett, Delina Hickey, Gretchen Hiegel, June and George Higgins, Ms. Margaret M. Higgins, Ann Hill and Sabina Schiller, Charlotte Hill, Lucia Hill, Dorothy Hires, Stephanie Ho, Rose Hofer, Frima Fox Hofrichter, Pamela Hoiles, Elodie Holmes, Joanie and Bobby Holt, Steven Alan Honley, Elizabeth M. Hossa, Larry D. Hothem, Linda S. Houston, Dee Howard, Allyn Howlett, Suellen and Hal Hudson, Milena P. Hughes, Ms. Constance Hunter, Kathy A. Hurling, Julianne Hurst, Marie Laure Ilie, Linda M. Ingersoll, Mary Ingram, Tania Iwanowski, Jackie Jablonski, Carin Jackson, Laurie Jacobs, Lynne Jacobs, Leslie Jacobson, Kathryn K. James, Marjorie Jeanchild, Marlene E. Jefferson, Helen Jennette, Karen Jerome and Jonathan Egg, Diana S. Jester, Victoria Johnson, Howard Johnston, Christine Johnston, Rosalyn and Gary* Jonas, Carol Adaire Jones, Chanel Jones, Diane Jones Meier, Grace Kaelin, Ms. Nannette Kalani, Arnold and Marcia Kaplin, Lisa Kaplowitz, Barbara J. Kashian-Snow, Marian Katz, Dorothy Kearns, Mae Keary, Peter Kern, Cookie Kerxton, Niki Ketchman, Deborah and Bruce Klein, Sylvia Kihara, Maggie Kildee, Susan Kindelt, Catherine Kinkade, Mary Anne Kinsella, Olivia Kohler-Maga, Beverly Kohot, Barbara J. Kraft and Peter Winkler, Suzanne Stephens Kragiel, Virginia M. Krall, Davida Kristy, Ms. Margaret H. Lacey, Lisa L. Lahrman, Zoe Landers, Abbie Laskey, Suzanne Lauver, Mary Ellen Lavenberg, Melanie C. Lawrence, Rene Lawson, Karen Leggett, Suzanne Lemakis, Marcia L. Leonhardt, Ms. Patricia L. Leslie, Marjory J. Levitt, Jeanne E. Levy, Constance Lewis, Marie Leyko and Gerald Poje, Gloria



NMWA welcomed the public back into the renewed building on October 21

PHOTO BY JOHN MANIARINO

Lieberstein, JoAnn Lindstrom-Clark, Hilary M. Lips, Wendi Londner, Dianna C. Long, Annie Lopez and Jeff Falk, Mitra Mortazavi Lore, Mary Frances Lowe, Jo Lucas, Elsa Ludewig-Verdehr, Carolyn J. Lukensmeyer, Ph.D., Vilma Luther, Patrice A. Lyons, Samantha Macinnis, Velma Magill, Louise Magoon, Leah Magyary, Barbara Malatesta, Diane Mangano-Cohen and William Cohen, Susan A. Maron, Leslie Marria, Alice Martinelli, Beth and John Mayfield, Nancy McCarthy, Mary J. McCutcheon, Lorraine M. McDonnell and M. Stephen Weatherford*, Dorothea McFarland, Karen McKeen and Laura Deluc, Dorothy and Bill McSweeney, Patricia Michael, Barbara Cernik Megery, Lauri Mendenhall, Vonda Meier, Gail Brotherton Meyers, Dr. Martha Mihaly Black, PhD, C. and Stafford Miller, Ann Mirels, Anisa Mohanty, Diane L. Mooney, Judy Sutton Moore, Concetta Morales, Nancy Morrison, Marcia Morse, Carolyn M. Mulac, Nancy Jo Mullen, Colette M. Murray, Verlyn Mysak, Adele Nagelberg,

Mira Nakashima-Yamal, Kristine Napora, Dawn Nelson, Mary Nelson, Sue Nelson, Marianne L. Nesler, Christie Neuger, Robert W. Newcomb, Leslee Newton-Reed, Bonnie Nickol, Judy Noble, Barbara Norton, Katie Norton, Carla Miller Noziglia, Maureen Freeman O'Brien, Lucia O'Reilly, J. Anne O'Neil, Marie Obermann, Mary Mark and John Ockerbloom, Shirley Oliner, Madeline and Allan Olson, Linda Onderko, Norma Osborn, Mary Ott, Jacquelyn Ottman, Mary L. Owen, Jane Pacelli, Judson Parsons, Joan Patton, Paula Paul, Judith Pence, Eleanor Pendleton, Elisabeth M. Pendleton, Beverly Penn, Deborah Perry, Kate M. Perry, Kathryn Peters, Corinne Peterson, Kathleen Petty, Victoria Pfaff, Caroline Pickens, Roberta Pieczenik, Heather Pierce, Dr. Patricia Pinson, Ms. Nancy E. Pirt, Ellen Poje, Margaret R. Polson, Mrs. Oveta Hall Popjoy, Deborah Blair Porter, Jeanne Porter, Kathryn M. Pumphrey, Lynn Preis, Sabiyha Prince, Laura Provan, Beth L. Quale, Jess

Rampulla, Nora Raum, Lori M. Reagan, Sonia Redfield, Millie Redinger, William and Nina Redlin, Mary V. Rehmann, Jane Reynolds, Regina Reynolds, Myra Rhoades, Cheryl A. Richey, Catherine Rickbone, Eleanor Ridley, Marilyn Riskhowski, Gail Ritchie, Rosette M. Roat Malone, Kathleen Robel, Diane C. Robertson, Gail Robinson, Shantay Robinson, Laura Rocco, Jamie Roche, Carol L. Rogers, Ms. Patsy Rogers, Lynne Rogerson, Karen Romer, Sharon Ross, Judi Rossman, Jane Rostov, Daria A Rothe, Helen Rothman, Ms. Joanna Rotte, Ms. Geraldine T. Rottenberg, Kristin Rover, Debra Rubino, Randi Rubovits-Seitz, Joyce Runyan, LaVonne L. Ruoff, Susan and Harvey Sachs, Renee Y. Sandell, Fanny Sanin, Patricia Schantz, Artemis Schatzkin, Mary Alice Schatzle and Glendowyn Howard, Mary C. Schlosser, Gail Schneider, Eleanor Schwartz, Jill Nevius Schwartz, Stephanie Schwartz, Penelope Schwind, Ruth A. Seif, Patricia Seiler, Rimma Selutin-Reusch, Cecilia B and

Peter Sepp, Anne Serafin, Mary Ann Serra, Laine Shakerdige, Virginia Shapiro, Elisa Shearer, Carola S. Shepard, Laurel M. Sheppard, Mike Sherling, Beverly Shipko, Sydney Ann Shollenberger, Gwendolyn M. Short, Sandra Sider, Donald R. Siebert, Julia and Sam Simmons, Katrina Simmons, Sonya Singer Livingston, William Sitzer, Cyndi Slacum, Don and Tina Slater, Beryl Ramsay Smith, Christine Smith, Dawn Smith, Donna Smith, Dorothy Smith, Fran Smith, Monica Smith, R Peggy Smith, R. P. Smith, Rebecca Smith, Ruth Ann Snowden, Nan Spalding, Sue Spincic, Charlene Spretnak, Vesela Sretenovic, Janet Stanley, Ms. Victoria Stanley, Elizabeth Starkey, Anne Reynolds Stauffer, Jan Steinhauer, Maryan F. Stephens, Joy Sterling, Deborah Stevens, J Stimmel, M Stinespring, Mary Stockton, Bonnie Stone, Margaret H. Stone, Anita Stowe, Devika Strother, Ann Strand and Stephen Shapiro, Melody Suzor, Jonathan A. Swartz, Jane Swicegood*, Nancy Szalwinski, Agnes V. Szekeres, Archana Szpak, Mary Harding Talbot, Betty Taska, Ms. Nancy E. Tate, Clytie Taylor, Patricia and Stillman Taylor, Ms. Seema J. Tepper, Nena Thayer, Mary Augusta Thomas, Anne Thompson, Betty Thul, Judith Towle, Richard Tron, Linda Tully, Lynn Ubhaus, Diane Ullius, Melissa Unger, Caroline Utz, Susan A. Valley, Barbara and Thomas Van Dyke, John A. Vassallo and Mary Vassallo, Sybil Veeder, Maria Vegega, Andrew Verostek, Gladys A. Villalobos, Pauline Wahl, Marjorie Wallach, Rosemary Lab Walters, Susan Walters, Minnie Warburton, Laurie Warhol, Ashley Warren, Sandra Jean Wasko-Flood, Andrea Watkins, Kimm Watson, Dr. Elissa B. Weaver, Bobbie Weider, Hadassah Ruth Weiner, Tracy Weiser, Renée Weitzner, Alysha Westlake, Maria L. Whelan, Anne Whipple, Susan White, Ashleigh Elizabeth White, Kathleen Whitehead-Churns, Nancy Wieman, Cynthia Wilcox and Sarah Kellogg, Laura and Dale Williams, Jane H. Willis, Jean Wilson, Gladys Wingfield, Amy Winton, Terry Bryant Wise, Barbara Withers, Lynnette Woerne, Carol L. Wolchok, Kathleen Woodcock, Marianne Woods, Laura L. Wong, Leslie A. Woolley, Ruth Wright, Cindi Wynia, Rosemary Wyse, Yuriko Yamaguchi, Rivka Yerushalmi, Cecelia Yoder, Patricia Yosha, Gail Zabowski, Laurie Zastrow, Kate Zehnter, Sophia C. Zetmeir, Nancy Ziegler, Ilene Zweig

*Deceased

(list as of October 1, 2023)

Museum Events

26

Grand Reopening Celebrations

1. First Lady Jill Biden welcomes supporters to the museum

2. Ana María Martínez, soprano, and pianist Craig Terry perform for attendees in the Mars Performance Hall

3. NMWA Trustee and event chair Cindy Jones; NMWA Director Susan Fisher Sterling; NMWA Trustee and honorary campaign chair Jacqueline Badger Mars; NMWA Board Chair Winton Holladay; NMWA Board President Susan Goldberg; and Rick Fernandez of Northern Trust, sponsor of the Grand Reopening evening

4. Jim and Susan Swartz

5. Dan and Gloria Logan

6. NAB member Denise Littlefield Sobel, Jake Weiss, Karen Huang, NAB member Belinda de Gaudemar, David Stevenson, Bloum Cardenas, Roman Gronkowski, NAB member Christine Suppes, Vanessa K. Valdés, and Denise Murrell

7. NMWA Trustee/NAB member Patti White and NAB member Mary Lou Dauray

8. Monica Alford and Angie Gates of EventsDC

9. Laurie Sands Harrison, Michael Lewis, JoAnne Johnson, Jiggy Johnson, NAB member Kay Olson, NMWA Trustee Janice Adams, NMWA Trustee/NAB member Stephanie Sale, James Singleton, Mary Ann Lassiter, and Allen Lassiter, of the Texas State Committee



10. Back row: Elenore Ross, Carter Phillips, NAB member Sue J. Henry, Kenneth Grunley, NMWA Trustee Sheila Shaffer, Rick Shaffer, and front: Sheila Stinson, NMWA Trustee Pamela Gwaltney, Carol Berkin, and NAB member Clara M. Lovett

11. Jayne Visser, Graham Harper, Grace Bender, Evan Jones, NMWA Trustee and event chair Cindy Jones, Chuck Fleischman, Joan Fleischman, Kristin Smith, P. Bart Stephens, Amanda Polk, and Curtis Polk

12. Enrique Segura, NMWA Trustee and honorary campaign chair Jacqueline Badger Mars, and NMWA Trustee Alejandra Segura

13. NAB member MaryRoss Taylor and NMWA Trustee Nancy Stevenson

14. NMWA Trustee Marlene Malek, NMWA Trustee Marcia Carlucci, and Michelle Malek Olson

15. Gil Kemp and NMWA Trustee Bonnie McElveen-Hunter

16. Aaron Myers (right), director of the D.C. Commission on Arts and Humanities and musician, joins the 24K Event Band

17. NMWA Director Susan Fisher Sterling; Jed Woelfle of Morgan Stanley, sponsor of the opening reception; Board Chair Winton Holladay; and Board President Susan Goldberg

18. NMWA Trustees Anjali Gupta and Karen Sonneborn

19. *In Focus* artists Rania Matar and Ambreen Butt with NMWA Associate Curator Orin Zahra

20. Sara Wessen Chang, *The Sky's the Limit* artists Ursula von Rydingsvard and Davina Semo, and Hayley Blomquist

21. Alison Saar in the *In Focus* immersive video gallery featuring her art



Ribbon-cutting Ceremony and Reopening Day

22. D.C. Mayor Muriel Bowser; NMWA Trustee Gina F. Adams; Board Chair Winton Holladay; Board President Susan Goldberg, NMWA Director Susan Fisher Sterling; and Larry Di Rita of Bank of America of Greater Washington, sponsor of the public Grand Reopening day, cut the ribbon to open NMWA to visitors

23. Poet Alexa Patrick performs new verse inspired by the museum

24. NMWA Director Susan Fisher Sterling welcomes the first attendees, including Vanessa Elliott

25. NMWA Deputy Director/ Chief Curator Kathryn Wat leads a tour of *The Sky's the Limit*

26–28. On NMWA's opening day, visitors celebrate with art and photobooth fun

29. Participants enjoyed flash tattoos by tattoo artist Bibi Abelle

30. *Holding Ground* artist Adjoa J. Burrowes (right) and Kamala Subramanian visit NMWA's new art-making studio

31. To close the day, percussion group Batalá Washington leads a joyous march



Supporting Roles

BOARD OF TRUSTEES

Winton S. Holladay—*Chair of the Board*, Susan Goldberg—*President*, Sheila Shaffer—*Treasurer and Finance Chair*, Charlotte Buxton—*Secretary*, Nancy Duber—*Governance Chair*, Susan Fisher Sterling—*Alice West Director***, Pamela Parizek—*Audit Chair*, Marcia Myers Carlucci—*Building Chair*, Amy Weiss—*Communications Chair*, Ashley Davis—*Government Relations Chair*, Nancy Nelson Stevenson—*Works of Art Chair*, Diane Casey-Landry—*Investment Chair*, Gina Adams, Janice Adams, Lizette Corro, Deborah Dingell, Martha Dippell, Susan Dunlevy, Belinda de Gaudemar, Anjali Gupta, Pamela Gwaltney, Eliza Holladay, Cindy Jones, Sally Jones, Marlene Malek, Ann Walker Marchant, Jacqueline Mars, Juliana May, Bonnie McElveen-Hunter, Lucretia Adymy Risoleo, Stephanie Sale, Julie Sapone, Alejandra Segura, Karen Sonneborn, Kathleen Elizabeth Springhorn, Annie Totah, Sarah Treco, Sara M. Vance Waddell, Alice West, Patti White

** Ex-Officio

NMWA ADVISORY BOARD

Sarah Bucknell Treco—*Chair*, Noreen Ackerman, Kathe Hicks Albrecht, Sunny Scully Alsup, Susan M. Ascher, Jaquita Ball, Jo Ann Barefoot, Gail Bassin, Arlene Begelman, Sue Ann Berlin, Catherine Little Bert, Brenda Bertholf, Caroline Boutté, Nancy Taylor Bubes, Deborah G. Carstens, Amb. Maria Eugenia Chiozza, Barbara Cohen, Marcella Cohen, Marian Cohen, Donna Paolino Coia, Robyn D. Collins, Linda Comstock, Margaret Conklin, Elizabeth Crane, Lynn Finesilver Crystal, Elizabeth Cullen, Mary Lou Dauray, Verónica de Ferrero, Belinda de Gaudemar, Kitty de Isola, Michele De Nevers, Katy Graham Debost, Alexis Deutsch, Ellen Drew, Kenneth P. Dutter, Christine Edwards, Anne N. Edwards, Gerry Ehrlich, Elva Ferrari-Graham, Charlotte K. Forster, Rosemarie C. Forsythe, Barbara S. Goldfarb, Sally Gries, Michelle Guillermin, Anjali Gupta, Pamela Gwaltney, Jolynda Halinski, Florencia Helbling, Sue J. Henry, Imogene Jensen, Jan Jessup, Alice Kaplan, Paulette Kessler, Arlene Fine Klepper, Doris Kloster, Carol Kolsky, Robin Rosa Laub, Elizabeth Leach, Cynthia Madden Leitner, Sarah H. Lisanby, M.D., Fred M. Levin, Bonnie Loeb, Gloria and Dan Logan, Angela M. LoRé, Clara M. Lovett, Joanne Ludovici, Marcia MacArthur, Linda Mann, C. Raymond Marvin, Rebecca Matejcek-Chang,

Ellen Stirn Mavec, Dee Ann McIntyre, Cynthia McKee, Constance C. McPhee, Lorna Meyer Calas, Anu Mitra, Milica Mitrovich, Mary V. Mochary, Claudia Pensotti Mosca, Kay Woodward Olson, Nancy Olson, Monica T. O'Neill, Carol Parker, Anthony T. and Trisja Malisoff Podesta, Lucy Rhame, Helena Ribe, Barbara Richter, Elizabeth Robinson, Tara Rudman, Stephanie Sale, Consuelo Salinas de Pareja, Steven Scott, Kathy Sierra, Ann Simon, Joan Simon, Geri Skirkanich, Heidi Brake Smith, Dot Snyder, Denise Littlefield Sobel, Patti Amanda Spivey, Kathleen Elizabeth Springhorn, Judith Karlen Stein, Sara Steinfeld, Jo Stribling, Christine Suppes, Susan Swartz, Cheryl S. Tague, Mahinder Tak, Judy Spence Tate, Lisa Cannon Taylor, MaryRoss Taylor, Brooke Taylor, Deborah Dunklin Tipton, Marichu Valencia, Sara M. Vance Waddell, Minal Vazirani, Victoria Vermes, Toni G. Verstandig, Virginia Voorhees, Paula S. Wallace, Harriet L. Warm, Krystyna Wasserman, Patti White, Tamara White, Carol Winer, Rhett D. Workman

LEGACY OF WOMEN IN THE ARTS ENDOWMENT

Endowment Foundation Trustee (\$1 million+)

Anonymous, Betty B. and Rexford Dettre*, Estate of Grace A. George, Wilhelmina C. and Wallace F. Holladay, Sr.*, Carol* and Climis Lascaris, Estate of Evelyn B. Metzger, The Honorable Mary V. Mochary, Rose Benté Lee Ostapenko*, The Madeleine Rast Charitable Remainder Trust, The Walton Family Foundation

Endowment Foundation Governor (\$500,000–\$999,999)

Noreen M. Ackerman, P. Frederick Albee and Barbara E. Albee*, Catherine L. and Arthur A. Bert, M.D., J.W. Kaempfer, Jr., Nelleke Langhout-Nix*, Joe R. and Teresa L.* Long, James R. and Suzanne S. Mellor, National Endowment for the Humanities, Drs. A. Jess and Ben Shenson*, MaryRoss Taylor, Alice W. and Gordon T.* West, Jr.

Endowment Foundation Fellow (\$200,000–\$499,999)

Catharina B. and Livingston L. Biddle, Jr.*, Marcia and Frank* Carlucci Charitable Foundation, Costa del Sol Cruise, Kenneth P. Dutter, Estate of E. Louise Gaudet, Lorraine G. Grace*, William Randolph Hearst Foundation, Estate of Eleanor Heller, Fred M. Levin and Nancy Livingston*/The Shenson Foundation, in memory of Drs. Ben and A. Jess Shenson, Dorothy S. Lyddon*/Seven

Springs Foundation, Marlene McArthur and Frederic V.* Malek, Victoria J. Mastrobuono*, Sea Goddess I and II Trips, Alejandra and Enrique Segura, Sheila and Richard Shaffer, Clarice Smith*, Elzbieta Chlopecka Vande Sande

Endowment Foundation Counselor (\$100,000–\$199,999)

Gina and Eugene Adams, Janice L. and Harold L. Adams, Nunda and Prakash Ambegaonkar, Carol C. Ballard, Baltic Cruise, Charlotte Clay Buxton, Eleanor and Nicholas D. Chabreja, Clark Charitable Foundation, Hilda and William B. Clayman, Julia B. and Michael M. Connors, Martha Lyn Dippell and Daniel Lynn Korengold, Gerry E. and S. Paul* Ehrlich, Jr., Enterprise Rent-A-Car, FedEx Corporation, The Geiger Family Foundation, Barbara A. Gurwitz and William D. Hall, Caroline Rose Hunt*/The Sands Foundation, Cindy and Evan Jones, Alice D. Kaplan, Dorothy* and Raymond LeBlanc, Lucia Woods Lindley*, Gladys K. and James W. Lisanby*, Lockheed Martin Corporation, Adrienne B. and John F. Mars, Juliana and Richard E.* May, Bonnie McElveen-Hunter, Irene Natividad, The Miller and Jeanette Nichols Foundation/Jeanette T. Nichols, Nancy O'Malley*, Lady Pearman, Reinsch Pierce Family Foundation/ Lola C. Reinsch and J. Almont Pierce, Julia Sevilla Somoza, Marsha Brody Shiff, Ann Simmons*, June Speight*, Kathleen Elizabeth Springhorn, Mahinder K. and Sharad Tak, Sami and Annie Totah Family Foundation

Endowment Circle (\$50,000–\$99,999)

Linda Able Choice*, George* and Ursula Andreas, Arkansas Fifty, Lulu H. Auger*, Virginia Mitchell Bailey*, Sondra D. and Howard M. Bender*/The Bender Foundation, Inc., Patti Cadby Birch*, Laura Lee and Jack S. Blanton, Sr.*/Scurlock Foundation, Anne R. Bord*, Caroline Boutté, BP Foundation, Inc., M. A. Ruda and Peter J. P. Brickfield*, Margaret C. Boyce Brown*, Martha Buchanan, Sandra and Miles Childers, Mary and Armeane Choksi, Donna Paolino Coia and Arthur Coia, Margaret and David Cole/The Cole Family Foundation, Holland H. Coors*, Porter and Lisa Dawson, Courtenay Eversole, Suzy Finesilver*/The Hertz and Suzy Finesilver Charitable Foundation, Karen Dixon Fuller*, Alan Glen Family Trust, Peter and Wendy Gowdey, Laura L. Guarisco, Jolynda H. and David M. Halinski, Janie Hathoot, Hap and Winton Holladay, I. Michael and Beth Kasser, William R. and Christine M. Leahy, Louise C. Mino Trust, Zoe H. and James H. Moshovitis, Joan and Lucio A. Noto, Marjorie H. and Philip Odeen, Nancy Bradford Ordway, Katherine D. Ortega, Margaret H. and Jim Perkins, Ramsay D. Potts*, in honor of Veronica R. Potts, Elizabeth Pruet*, Edward Rawson*, Jane S. Schwartz Trust, Jack and Dana*

Snyder, Judith Zee Steinberg and Paul J. Hoenmans, Susan and Scott Sterling, Nancy N. and Roger Stevenson, Jr., Jo and Thomas Stribling, Susan and Jim Swartz, Elizabeth Stafford Hutchinson Endowed Internship—Texas State Committee of NMWA, Frances and William* Usher, Stuart and Chancy West, Betty Bentsen Winn and Susan Winn Lowry, Yeni Wong

Endowment Patron (\$25,000–\$49,999)

Micheline and Sean* Connery, Stephanie Fein, Sheila Ffolliott, Georgia State Committee of NMWA, New York Trip, Mississippi State Committee of NMWA, Northern Trust, Estate of Mary Marvin, Breckinridge Patterson, Chris Petteys*, Lisa and Robert Pumphrey*, Elizabeth A. Sackler, Estate of Madoline W. Shreve, Patti Amanda and Bruce Spivey, Sahil Tak/ST Paper, LLC, in honor of Alice West, In honor of Alice West, Jean and Donald M. Wolf, The Women's Committee of NMWA

Endowment Sponsor (\$15,000–\$24,999)

Deborah G. Carstens, Martha and Homer Gudelsky*, Sally L. Jones, Louise H. Matthews Fund, Lily Y. Tanaka, Liz and Jim Underhill, Elizabeth Welles, Dian Woodner

Endowment Friend (\$10,000–\$14,999)

Carol A. Anderson, Julia and George L. Argyros, Mrs. Joseph T. Beardwood, III, Catherine Bennett and Fred Frailey, Susan G. Berk, Mary Kay Blake, Booz Allen Hamilton, Lynne V. and Richard Cheney, Esther Coopersmith, Darby Foundation, Juliet De Laricheliere*, Jack J. Dreyfus, Jr.*, Patricia M. and Clifford J. Ehrlich, Mary Page and Thomas B. Evans, Lois Lehrman Grass*, Anna Stapleton Henson, Alexine C. and Aaron G. Jackson*, Jan Jessup, Pamela Johnson and Wesley King, Helga and Peter-Hans Keilbach, Howard and Michelle Kessler, Ellen U. and Alfred A. King*, Jacqueline Badger Mars, C. Raymond Marvin, Clyde and Pat Dean McCall, Edwina H. and Charles P. Milner*, Evelyn V. and Robert M. Moore*, Harriet Newbill, Estate of Edythe Bates Old, PepsiCo., Inc., Anne and Chris Reyes, Savannah Trip, Mary Anne B. Stewart, Paula Wallace/ Savannah College of Art and Design Marjorie Nohowel Wasilewski, Jean S. and Gordon T. Wells

* Deceased

(lists as of November 1, 2023)

WITH THANKS

The National Museum of Women in the Arts recognizes with gratitude the following donors who made contributions from July 1, 2022, to June 30, 2023. Your support enables NMWA to develop groundbreaking exhibitions, expand its education, library, and outreach programs, and offer special events to the public.

Your contributions are critical to the museum's success!

Although we can only list donations of \$500 and above due to space constraints, we are thankful for all of the museum's members and friends. Gifts to the Space to Soar capital campaign are listed on page 22, and gifts to the Legacy of Women in the Arts Endowment on page 29.

\$500,000+

Denise Littlefield Sobel

\$100,000–\$499,999

Anonymous, The Davis/Dauray Family Fund, DC Commission on the Arts and Humanities, Jamie S. Gorelick and Richard E. Waldhorn, Institute of Museum and Library Services, MaryRoss Taylor, U.S. Commission of Fine Arts and the National Capital Arts and Cultural Affairs Program

\$50,000–\$99,999

Anonymous (2), FedEx/Gina Adams, Geiger Family Foundation, Marlene Malek, Jacqueline Badger Mars, Martha Dippell and Daniel Korengold, RBC Capital Markets, LLC, Alice L. Walton Foundation, Patricia and George White

\$25,000–\$49,999

The Deborah Buck Foundation, Deborah G. Carstens, Marcia Myers Carlucci, Ashley Davis, Nancy and Marc Duber, Elmer and Mamdouha Bobst Foundation, Inc., Elva Ferrari-Graham, Lois Lehrman Grass*, Grunley Construction Co., The Hayes Foundation, Winton and Hap Holladay, Cindy and Evan Jones, J.W. Kaempfer, Jr., Leo Rosner Foundation, Inc., Lugano Diamonds, Marcia MacArthur, Miller Strategies LLC, The Morris and Gwendolyn Cafritz Foundation, Laurel and John Rafter, Sheila and Richard Shaffer, Share Fund, Karen and William Sonneborn, Sony Corporation of America, Toni G. and Lee L. Verstandig

\$15,000–\$24,999

Lorna Meyer Calas and Dennis Calas, Diane Casey-Landry and Brock Landry, Marcy and Neil Cohen, Robyn D. Collins, Susan and Frank Dunlevy, Augustus and Anne N. Edwards, Susan Goldberg, Pamela Gwaltney, Hobson Lucas Family Foundation, Shelley and Allan Holt, Kristen and George Lund, Dee Ann McIntyre, Milton and Dorothy Sarnoff Raymond Foundation, The National Cooperative Bank, Laurel M. Nett*, PECO Foundation,

Anthony T. and Trisja Malisoff Podesta, Lucretia Adymy Risoleo and Robert S. Risoleo, Stephanie Sale, Alejandra and Enrique Segura, Kathy Sierra, Patti Amanda and Bruce Spivey, Susan Fisher Sterling and Scott Sterling, Ayako Weissman, Carol and Michael Winer, World Bank Community Fund

\$10,000–\$14,999

Anonymous (2), Gail D. Bassin, Bernice E. Colman Trust, Diana T. and Colin H. Brown*, Charlotte and Michael Buxton, Alexis Deutsch-Adler, Ellen Drew, Rosemarie Forsythe, Sue J. Henry and Carter G. Phillips, LaVerna Hahn Charitable Trust, Bonnie Loeb, Angela LoRé, Clara M. Lovett, Joanne Ludovici, Esq., Dr. Kathleen A. Maloy and Ms. Heather L. Burns, Linda and Larry Mann, Timothy and Anita McBride, Anne McNulty, The Honorable Mary V. Mochary, Kristine Morris, Nancy Ann Neal, Alison and William Paley, Carol and Gerry Parker, Amanda and Curtis Polk, Elizabeth Robinson, Nancy N. and Roger Stevenson, Jr., Tara Rudman, Steven Scott, Dasha Shenkman OBE, Geri Skirkanich, Robert J. Task, Esq.*, Judy S. Tate and Charles Tate, Nancy Taylor Bubes and Alan Bubes, Deborah Dunklin Tipton, Annie S. Totah, Marichu C. Valencia, Paula S. Wallace

\$5,000–\$9,999

Anonymous (2), Noreen M. Ackerman, Mark and Kathe Albrecht, Susan Ascher and Paul Kalb, Sue Ann and Ken Berlin, Anne E. Branch, Arlene Begelman, Beth B. Buehlmann, Couture Circle, Lizette Corro, Edward Rubin Estate, Virginia L. Fulton, Belinda de Gaudemar, Monica Greenberg, Ilene S. and Jeffrey S. Gutman, Alan and Bonnie Hammerschlag, Horizon Kinetics LLC, Gale Anne Hurd, The Japan Committee of NMWA, Imogene Jensen, Pamela C. Johnson and Wesley King, Sally and Christopher H. Jones, Alice D. Kaplan, Kenneth and Lisa Kelley, Anne M. Larner and Robert J. Larner, Robin Rosa Laub, Nancy Livingston* and Fred M. Levin, Andrea Lowe, Jerri Mayer, The Mill Foundation, LTD, Russell and Mims Lindner, The Massachusetts State Committee of NMWA, Rebecca Matejcek-Chang, Marcia Mau and Frank Moy, Juliana and Richard E.* May, Bonnie McElveen-Hunter and Bynum* Hunter, Cynthia A. McKee, Nancy Peery Marriott Foundation, The Mississippi State Committee of NMWA, Claudia Pensotti Mosca, National Italian American Foundation, Irene Natividad, Mary B. Olch, Kay W. Olson, Nnenna Ella Peters, Sandy Pollack*, San Francisco Advocacy Group of NMWA, Kathleen Elizabeth Springhorn, Mahinder and Sharad Tak, Sara and Michelle Vance Waddell, Virginia Voorhees, Donald Zucker

\$2,500–\$4,999

Anonymous, Sunny Scully Alsup and William Alsup, Arizona Committee of NMWA, Arkansas Committee of NMWA, Jaquita Ball, Jo Ann Barefoot, Martha Bergman, Catherine Bert and Arthur Bert, M.D., Sharon K. Bigot, Bobbe J. Bridge, Caroline Boutté, Margaret C. Boyce Brown, Katherine and Richard Bruch, Yolanda Bruno, Lisa Cannon and Charles Edison Taylor, Catherine Pendola Tringali Fund, Renee Chodur, CityCenter DC, Marian Cohen, Donna Paolino Coia and Arthur Coia, Colorado State Committee of NMWA, Margaret Conklin and David Sabel, Elizabeth Crane, Lynn Finesilver Crystal, Liz Cullen, Katy Graham Debost, Kitty de Isola and Max Cambana, Pam Del Duca, Sara Jo Victors Dew, Kenneth P. Dutter, Christine Edwards, Gerry Ehrlich, Susanne E. and Clayton W. Eisinger, Barbara L. Elky, Denise J. Fiore, Barbara L. Francis and Robert Musser, Reide Garnett, Lucy Buchanan Garrett, Barbara S. Goldfarb, Greater Kansas City Area Committee of NMWA, Sally Gries, Anjali Gupta, Susan Hairston, Jolynda H. and David M. Halinski, Robin and Jay Hammer, Patricia and E. Bruce Harrison, Gwen and Stu Holliday, Michelle Howard, Susan Borkin, Marissa A. and James Huttinger, Italy Committee of NMWA, The Jane Henson Foundation, Jan V. Jessup, Sheila C. Johnson, Margaret M. Johnston, Audrey and Sheldon Katz, Paulette and David Kessler, Susan W. Klaveness, Arlene Fine Klepper and Martin Klepper, Doris Kloster, Mary Koleski, Carol Denise and Martin Paul Kolsky, P. Koshland, Lisa Koslow, The Louis J. Kuriansky Foundation, Inc., Sandra W. and James Langdon, Jr., Nelleke Langhout-Nix*, Cynthia Madden Leitner and Roger* Leitner, Dena Levy, Marc Levy, Maryann Lynch, Elizabeth Marchut Michalski, C. Raymond Marvin, Ellen Stirn Mavec, Toni Ratner Miller, Leila W. Mischer, Dr. Anu M. Mitra, Milica Mitrovich, Sherrill A. Mulhern, New Mexico State Committee of NMWA, Jeannette T. Nichols, The Ohio Advisory Group of NMWA, Jane Olin, Nancy and Eric Olson, Monica T. O'Neill, Anna Parisi-Trone and Robert Trone, Cynthia Paschen, Peru Committee of NMWA, Anna Pfeifer, Jean Porto, Sarah M Pritchard, Martha A. Prumers, Helena Ribe, Barbara Richter, Nina Richter and Glenn Shambroom, Mary Jane Rynd, Joyce E. Scafe, Jackie and Paul Schaeffer, Edwina Sebest, Dr. Cynthia M. Shewan, Lucille E. Simon*, Joan Simon, Lera Smith, Ph.D. and Steven Smith, Heidi Brake Smith, Dot Snyder, Marsha S. Soffer, Judy W. Soley, Southern California State Committee of NMWA, Alyssa K. Mertz and Susan K. Sovel, Dr. Judith K.

Stein, Sara Steinfeld, Mary Strauss, Cheryl S. Tague, Brooke Taylor, Texas State Committee of NMWA, Patt Trama, Sarah Bucknell Treco, Frances Usher, Micaëla Van Zwoll and John Green, Johan van Zyl, Harriet L. Warm, Krystyna Wasserman, Amy Weiss, Carolyn Weller, Dr. Tamara White, Karen Wilson, Betty Bentsen Winn, Jean and Donald Wolf, Wyoming State Committee of NMWA, Margot Lurie Zimmerman

\$1,000–\$2,499

Anonymous (4), Ruth and Sam Alward, Robin M. Andrews, Antonio Antonio, Therese Baker-Degler, Rita Balian, Anne Banfield, Virginia Barbato, Sandra Bass, Kyra Belan, Leslie B. Belzberg, Susan G. and Lee Berk, June Beyer, Melinda Bieber, Lynne Blei, Sandra Bloch, Marjory and William Blumenthal, Tanya Bonakdar, Carolyn Booker, The Honorable Gaylyn N. Boone, Ginger and James Bowen, Mary Boylan, Leonie M. and John R. Brinkema, Jean B. Brown, Melissa and Jason Burnett, Charlotte Anne Cameron, Brenda Daley Carr, Bonnie Carroll, Casey and Jack Carsten, Sara Carter, William Catacosinos, Laura and Guy Cecala, Janet and Maarten Chrispeels, Barbara L. Cohen, Elaine and Kenneth W. Cole, Anna Weatherly and George Contis, Josephine Cooper, Mary Lee Cooper and Robert D'Annucci, Ashley Dabbiere, Daniels Family Charitable Trust, Paul Davis, Doloras E. Davison, Barbara Douglas, Mr. and Mrs. Scott E. Dreyer, Elizabeth and Anthony Enders, Deborah and Philip English, Dawn Espinoza, Mary Evans, Mary Ann Fastook, Kaywin Feldman and Jim Lutz, Jean Fishbeck and Judith Popovich, Karen Fore, Constance S. and Joseph P.* Franklin, Sally Mott and John K. Freeman, Nancy L. Fulton, Dr. Lynn Rothschild Gagnon, Carol and William Gay, Garifaltia Georgakopoulos, Marguerite F. Godbold, Paula K. Graham, Sheila and Patrick Gross, Kathleen A. Guinn, Elizabeth and Peter Haaker, Nora Harlow, Anna-Liza and Jeff Harris, Janet Ruth Heller, Jo M. Hendrickson, Madge Green Henry, Bob and Betsy Huffman, Vicky Hughes, Karen Humphrey, Nancy Insprucker, Derek and Gillian Jackson, Diane M. Jacobs, Madelyn Jennings, Melissa Bunnan Jernigan and James Jernigan, JoAnne and Jim Johnson, Ellen Jozoff, Caroline Kaplan and Douglas Clark, Julie Karcis, Kitty Kelley, Thomas Kenan, Jim and Kristine Kennedy, Susan Kennedy and Julie Hewitt, Kathleen Knepper, Alan Kreigel, Mary Lou Laprade, William R. and Christine M. Leahy, Levenger Foundation, Claudette S. Leyden, Bryce Lingo, Joanne Lyman, Nancy Maloney, Ann Walker Marchant, Watters O. Martin, Jr., Janice Mays, Susan McCaskill, Emily Brown McCoy,

Debra McLeod, Michelle Mercer and Bruce Golden, Joanna Miller, Daniel Miller and Loreen Miller Trust, Helen Mulkeen, Lola M. Muller, Ms. Mary Murphy and Mr. Bill Lynn, Linda Myers, Melissa Nabors, The NAMASTE Foundation, Eva Neumann, Georgine Neureiter, Lynn Nicoletta, Bu Nygrens, Glenda E. Oakley, Kimberly O'Connor, Carol J. Olson, Nancy B. Ordway, Maureen A. Orth, Jeanne Paparazzo, Pamela J. Parizek, Betsy Peitz, Tenley Peterson, Anna Gunnarsson Pfeiffer, Susan Phifer, Elicia Pierro, Ann Marie Pinto, Sue Plattner-Smith, Edith and John Poertner, William Pollak, Dr. Michael and Mrs. Mahy Polymeropoulos, K. Shelly Porges and Rich Wilhelm, Miriam Ramos, Jorgen A. Rasmussen, Rebecca Ravenal, Janis S. Reed, Belinda Reusch, Sandra Riggs, Jean W. Roach, Bettye Robertson, Mary Anne Rogers, Emily G. Ross, Anya Royce, Stephanie Russo, Ryan Family Foundation, Julie and Captain David Sapone, Elizabeth Schraft, Lauren and Tim Schrager, Catherine Seibert and Frederick Wright, Dennis Siegner, Sally and John Simms, Sandra Simon, Esther Simplot, Paul and Emily Singer Family Foundation, F. Louise and Wayne Smith, Gene M. Smith and Rachel Atcheson, Linda Watkins Sorkin, Andre Spearman, Richard E. Stafford, Janet Stanley, Dr. Marjorie L. Stein, Gael Storck and Thomas Lykens, Elizabeth Talmadge, Amanda M. Termuhlen, Donna Thal, Julie Towell, Micaela A. Trumbull, Marta Van Loan, Elzbieta Vande Sande, Anne L. von Rosenberg, Laurie Weckel, Candace King Weir, Germaine Giani Weldon, Sandra and Jon Willen, Lucy and Scott Wilson, Gayle Wilson, Christopher and Beverly With, Wanda C. Wood, Ret., Dorothy and Kenneth Woodcock, Rhett D. Workman, Carolyn Young, Jan Zahrly

\$500-\$999

Anonymous (2), Diane Abeloff, Ms. Margery Al-Chalabi, Mary Augustiny, Kathy and Thom Barclay, Linda C. Barclay, Sybil Barnes, Karen Bartman, Marie A. Barton, Johanna Baruch, Susan Bass, Jameson Baxter, M. Bekkum, Thomas Beline, Kimberly Berg, Mary Ellen Bergeron, Barbara Berk, Michael Berman, Joyce Blalock, Laura Blanco, Elaine Blaylock, Deanna Boling, Jacqueline Bontemps and Alease Madden, Robert Bramlett, Phyllis Cairns, Yuri Calastro, Kathleen Carey, Ann Sanders Cargill, Ann Carlson, Constance Carter, Karen Castle, Cheryl Chase, Angelo Cicolani and Christine Blair, Sherri Cohen, Shelley Cohn, Mary and Dave Colton, Susan Connelly, Mrs. and Mr. Barbara Cox, Linda and Brad Crosby, Johanna Cummings, Dr. Linda Daniel, Rebecca Davenport, Susan A. Davis, Diana Dean-Spurgeon, Carol A. Delany, Janet L. Denlinger, Barbara Denrich,

Denise Dowd and Jill Burton, Eileen Duggan, Kelly and Louise Dunn, MaryLe Emmett, Loretta Fabricant, Sandy Falloon, Ginny Feldman, Joyce M. Flaherty, Helen H. Ford, Marcia Fortes, Brandon Fortune, Daun and Walter Frankland, Deborah Freedman, Virginia Elkin Fuller, Joseph L. Gastwirth, Gunda Georg, The Georgia Committee of NMWA, Angela Gildner, Maria Glover and Derek Ho, Barbara and Rich Gray, Catherine A. Green, Jeri Greenberg, The Greenberg Foundation, The Greene-Milstein Family Foundation, Deborah Greenstein, Ashley Greer, Linda Griggs and William Swedish, Constance Haaser, Lillian Hagen, June Hajjar, Katharine Hammond, John Hanks, Adrienne and Bill Hanna, Newell Harbin, Stephanie Harpst, Sandra Harris, Barbara Hawthorn, Michele and John Hazel, Jo Ann Hearld, Alex Heathcock, Ruth Hemming, Jill Herscot and Andrew Bartley, Lucia Hill, Nancy Hirshbein and Robert Roche, Jennefer A. Hirschberg, Marjorie Hobart, Patricia and Patricia Hoefler, Michele E. Holt, Mary Hunter, Michelle Jeschelnig, Anne and Clay Johnson, Marlene Johnson, Carol Jones, Beverly Kaplan, Linda Kaplan, Dolores Karp, R. Sue Kaufman, MaryJo Keefe, Kathleen and Thomas Kelley, Janet R. Kelly, Peaches Kempner, Lynne Kennedy and Joan Darrah, Leslie J. Kenyon, Cookie Kerxton, Jennifer E. Kiddie, Sarah Kiefer, Elizabeth Klinger, Marta Kipfmuehler and Bernard J. Theisen, Charlotte Koenigsaecker, Alice Kuzniak, Arlene Peper La Pierre, Suzanne S. La Pierre, Judy Lampert, Susan Larimer, Ruth and Edward Legum, Margaret and Emily Lenzner, Bari R. and Keith D. Levingston, Peggy Lidstad, Cathie Linton, Donna Lippman, Elizabeth and Jan Lodol, Liz Minyard Lokey, Alma Long, William Looney, David Loring, Brenda Lowe, Elizabeth Lutes, Carol MacGregor, Marcia Macharg, Anne H. Magoun, Priscilla W. and Joe R. Martin, Linda Mayer, Sally Mayer, Pamela and Michael McCarthy, Lorraine M. McDonnell and M. Stephen Weatherford*, Tracy B. McGillivray, Laurie E. McNeil and Patrick W. Wallace, Suzanne McQuaide, Arlene Meadows, Elizabeth G. Menaghan, Mr. and Mrs. Charles A. Meyer, The NMWA Advisory Board Mid-Atlantic Committee, Nora Miller, Nancy and Lawrence Moore, Twig Murray, Mike O'Connor, Madeline and Allan Olson, The Cormac and Moira O'Malley Fund, Jill Over, Judson Parsons and Diana Gardener, Rebecca J. Parsons, Mary Ann Pemberton, Marta M. Pereyma, Molly Peter, Lori Peters and Justin Bukowski, Jeanette Petite and Michael James Petite, Margie Pietz, Gabe Podesta, Margaret R. Polson, Victoria Pope, Deborah Porter, Janet Powers, Debra Price, Isabel Rauch, Margaret

Reichard, Tanya Renne and Cindy Morgan-Jaffe, Susan Resnik, H. F. Richardson, Ms. Betsy A. Ritz, Diane C. Robertson, Gary Roper, Judy Rosenberg, Allen Salyer, Christopher S. Sargent, Rita Schoeny and Mary Rieger, Anikó G. Schott, Francesca Schwartz, Karen Schwartz, Margaret Scott, Jocelyn Selig, Renee Shea, Dianna Shomaker, Jennifer L. Sigler, Andrea Roane and Michael Skehan, Kristin Smith, Monica Smith, Elizabeth and Eric Stahl, Pegge M Steele, Joy Sterling and Forrest Tancer, A. Stevens, Ann Strand and Stephen Shapiro, Douglas K. Struck, M. Elizabeth Swope, Jan Talley, Alethea Taylor, Sarah Shell Teague, Mary and Charles Teeple, Abigail B. Test, Jane Thompson, Patricia and Ellen Tice, Sofia Trumper, Donna Turlinski, Stephen Turow and Linda Blumberg, Patricia Vanderbeke, Rosa Ines Vera and Joseph Carey, HelenBeth Vilcek, Mark and Sonja Wagner, Adam Warshavsky, Carolyn L. Wheeler, Mary White, Virginia and Robert Wierman, Suzanna Wight Kelley, Britt-Mari Wisniewski, Regina Bilotta Witkin, Anne Wright-Wilson, Annmarie Zimmerman, Elizabeth Zipp

NMWA strives to ensure the accuracy of donor information. We apologize for any errors or omissions. Contact 866-875-4627 with changes or questions.

THE WILHELMINA AND WALLACE HOLLADAY LEGACY SOCIETY

We extend sincere thanks to the following donors, who have informed the museum of their commitment to support NMWA through planned giving. The Wilhelmina and Wallace Holladay Legacy Society recognizes our founders as well as dedicated friends who ensure that NMWA's mission will thrive for generations. Donors whose planned gifts are designated for the Legacy of Women in the Arts Endowment are listed separately on page 29 and for the Space to Soar Capital Campaign on page 22.

Anonymous (48), Marlene J. Adrian* and Denise R. Duarte, Susan Aitcheson and Michael Guertin, Sunny Alsup, Alyssa H. Arute, Renée Bash, Ms. Kimberley L. Boyd, Marilyn Brendel Brooks, Beth B. Buehlmann, Jan S. Carr, Shelley Carton, Diana S. Dean-Spurgeon, Sara Jo Victors Dew, Kenneth P. Dutter, Margaret Dzwilewski, Sylvia B. Fatzer, Michele Garside, PhD, Deborah Porter Glenn, Barbara Gurwitz and William Hall, Ms. Alice Haddix, Margaret Hayes, Tamara Ilasat, Jan Jessup, Suzanne Johnson, Alice D. Kaplan, Florence Katz, Charleen Kavleski, Rita Marie Kepner, PhD & John Matthiesen in memory of Lisa T. Painter, Cynthia L. Korte, Stuart and Barbara Kreisberg, Sally G. Lefter, Debra Light, Judith A.

Lindquist, Marcia MacArthur, Melody Marks, Janet Meister, Mme. Gail B. Meyers, Kristine Morris, Marcia Morse, Diane E. Mularz, Nancy Ann Neal, Yvonne S. Olson, Jill W. Over, Cathy and Bill Pastor, Roseanne Marie Peters, Anthony Podesta, Joyce D. Portnoy, Mary H. Railsback* and Joel L. Ekstrom*, Hedy M. Ratner, Markley Roberts in memory of Jeanne Addison Roberts, Synthia Saint James, Michelle and Jonathan Sales, Christopher S. Sargent, Lois Shelton, Syndi Ann Shollenberger, Sandra Sider, Linda Watkins Sorkin, Shirley A. Sparr, Carol A. Talbeck and Gale A. Townsley, Jessica Tava, Sandra Gleichman Thompson, In honor of Rose Marcus Tobey, Harriette Treloar, Barbara Burnett Vater, Gail Waechter* and Paula Mack, Harriet L. Warm, Mary Lee Wood, Margot Lurie Zimmerman

**NATIONAL AND INTERNATIONAL
OUTREACH COMMITTEES**

NMWA's national and international outreach committees share the museum's mission and champion women artists in their regions. The museum has committees in the following locations: we recognize the leaders of these groups for their special partnership.

U.S. Committees

- Arizona
Shelley Cohn and Clara M. Lovett
- Arkansas
MaryRoss Taylor
- Colorado
Cecily Cullen
- Georgia
Katie Johnson, Sara Steinfeld, and Angela West
- Greater Kansas City Area
Jan Leonard
- Massachusetts
Sarah Bucknell Treco
- Mid-Atlantic
Robyn Collins and Linda Mann
- Mississippi
Nancy Anne Branton
- New Mexico
Nancy Olson
- New York
Regina Bilotta
- Ohio
Donna Collins and Sara M. Vance Waddell
- Oregon
Elizabeth Leach
- San Francisco
Lorna Meyer Calas and Carol Parker
- Southern California
Margaret Black and Alexis Deutsch-Adler
- Texas
Jean Alexander
- Washington
Virginia Voorhees
- Wyoming
Pamela Gibson

International Committees

- Argentina
Floencia Helbling
- Canada
Alexandra Lambert
- Chile
Drina Rendic
- France
Judith de Montgolfier
- Germany
Ann Simon

- India
Minal Vazirani
- Ireland
Catherine Heaney and Catherine Marshall
- Israel
Yeala Hazut and Ifat Zamir
- Italy
Claudia Mosca Pensotti
- Japan
Noriko Kashiwagi and Ayako Weissman
- Peru
Consuelo Salinas de Pareja
- South Korea
Hyunjun Lim
- Spain
Sofia Barroso
- United Kingdom
Susan Zimny

NMWA STAFF AND VOLUNTEERS

Museum Staff

- Rebecca Ajtai, Elizabeth Ajunwa, Brittany Alexander, Neda Amouzadeh, Gregory Angelone, Gabrielle Awuma, Pamela Ayres, Catherine Bade, Michael Barreto, Doug Beaver, Shazza Berhan, Anthony Bowman, Kate Seno Bradshaw, Danielle Brogdon, Lori Brubaker Smith, Tina Burke, Orlando Caicedo, Kirstin Canner, Lindsay Canting, Traci Christensen, Angela Clexton, Gala Cude-Pacheco, Kelley Daley, James Davis, Linda Day, Laura Devereux, Grace DeWitt, Marilyn Dews, Melani N. Douglass, Falere Fagaroye, Emma Filar, Shannon Gabriel, Karina Gaytan Rivera, Deborah Gaston, Adrienne L. Gayoso, Kina Gerald, Alicia Gregory, Ilene Gutman, Laguana Harley, Knowles Harmon, Ashley W. Harris, JeNeye Hawking, Chloe Hill, Laura Hoffman, Chamar Holcomb, Quinshay Horsley, Annie Hu, Andrew Hudson, Carin Johnson, Helena Johnson, Emma Kerr, Danita Robinson, Marin Kirk, Christina Knowles, Micah Koppl, Sydney Kriek, Maria Jose Lares, Holly Ludvigsen, Elizabeth Lynch, Amy Mannarino, Martha Manrique, Dominique Manuel, Aaron McKeiver, Fiona McNally, Glenn McPhee, Elizabeth Mondragon-Groff, Alisha Negron Cruz, Gretchen Ortega, Seema Osielski, Maria Patterson, Mai Pham, Meropi Plato, Ellen Pollak, Rahmaan Rasheed, Adriana Regalado, Ralph Richardson, Herbert Richey, Courtney Robinson, Hannah Shambroom, Melissa Sheinman, Mariana Sobrero, Rachel Stein, Susan Fisher Sterling, Virginia Treanor, Gordon Umbarger, Paris Valladares, Amanda Veracruz, Maria B. Vizcaino, Brayden Voelkel, Kathryn Wat, Madison Wentela, Taylor Williams, Ashli York, Orin Zahra

Volunteers

- Carolyn Afshar, Katie Altizer, Fay Arrington, Rose Marie Barreyro, Sophie Barry, Jayne Beline, Susan Borke, Sumana Chatterjee, Sally Cho, Marilyn Cohen, Marilia Costa, Madeline Delahan, Cari DeSantis, Anne Dine, Mona El-Bayoumi, Kathy Fearnside, Christine Fisher, Erin Garland, Lucy Gregor, Meghan Hanson, Marci Hodge, Caitlin Hoffman, Marcia Hsu, Laura Hutson, Marissa Huttering, Katelyn James, Grace Knudsen, Olga Kulyk, Karen La Du, James Le, Andrew Lokay, Hope Louis, Rene Maddox, Julia Margalit, Paige Mason, Karen Matlaga, Colli McKiernan, Jazmin Mora, Genevieve Moreland, Arantza Murphy, Sandra Parsons, Christel Petermann, Victoria Pfaff, Laura Provan, Christina Reitz, Margaret Richardson, Joseph Rippin, Shelley Sams, Yasmin Tasan, Shannon Turkewitz, Lori Vitellozzi, Mary Walter, Cynthia Warshaw, Susan White, Carol Wolchok

Museum Shop

Shop NMWA online at <https://shop.nmwa.org>

33



The Sky's the Limit Exhibition Catalogue

NMWA's inaugural reopening exhibition features large-scale contemporary sculpture and installations. Giving primacy to artists' voices, this publication shares artists' essays and poetry revealing the inspirations behind their work. Softcover, 128 pages. \$32.95/Member \$29.66

Carafe and Cup Set

House of Nunu's amber-hued, hand-blown carafe and cup set brings warmth and sophistication to any table. Made from heat-resistant borosilicate glass. Dishwasher safe. Carafe: 6.4 in. high; Cup: 2.7 in. high. \$79.95/Member \$71.96



Rise and Shine Vase

Blending fun and function, this porcelain vase serves as a playful conversation starter while holding your favorite blooms. 8.5 in. high x 2.75 square. \$30/Member \$27



Glass Teapot

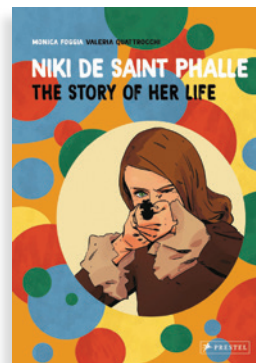
Award-winning homeware designer Sophie Lou Jacobsen teamed up with The Qi, a flower tea shop, to create this joyful handmade glass pot for your tea rituals. 22 oz., 6 in. high. Made from heat-resistant borosilicate glass. \$109/Member \$98.10



Niki de Saint Phalle:

The Story of Her Life

Writer Monica Foggia and illustrator Valeria Quattrocchi tell the story of how Saint Phalle, a self-taught feminist artist, became a promoter of gender equity and a champion of social justice. Hardcover, 128 pages. \$24.95/Member \$22.46



"It's Me" Needlepoint Pillow

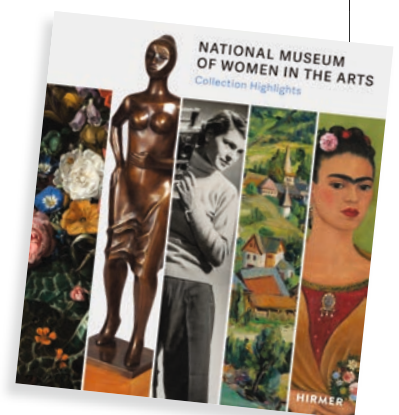
Furbish Studio's embroidered decorative pillow features the candid words of Taylor Swift. Add a dash of charm and self-awareness to your space. \$108/Member \$97.20

Color Me Happy Votive Candle Set

Candles inspired by crayons! This set of four colored wax votive candles features vetiver and cardamom scents. Each 2.5 oz. \$32.95/Member \$29.66

National Museum of Women in the Arts: Collection Highlights

The museum's new collection highlights catalogue explores the breadth of NMWA's holdings, drawing connections among more than 180 works and sharing new essays by nearly fifty artists and scholars. Hardcover, 264 pages. \$60/Member \$54



// COMING SOON

New Worlds

Women to Watch 2024

April 14–August 11, 2024

Visionary artists reimagine the past, present alternate realities, and inspire audiences to create different futures. During the past few years, our world has been transformed by a global pandemic, advocacy for social reform, and political division. How have these extraordinary times inspired artists? Works by the twenty-eight artists

featured in *New Worlds: Women to Watch 2024* explore these ideas from perspectives that shift across geographies, cultural viewpoints, and time.

New Worlds will immerse visitors in the museum's renewed spaces. It is the seventh and largest installment of the museum's *Women to Watch*

exhibition series, a dynamic collaboration between the museum and its network of outreach committees. The committees participating in *New Worlds* worked with curators in their regions to create shortlists of artists. From this list, NMWA curators selected the artists and works to exhibit at the museum in 2024.

April Banks, *Future Ancient*, 2022; Fused glass, cut metal, and LED light panel, 20 × 42 × 3 in.; Courtesy of the artist



PHOTO BY GLEN WILSON