

Women in the Arts



NATIONAL
MUSEUM
OF WOMEN
IN THE ARTS



Visitors marvel at art in *The Sky's the Limit*, including works by Petah Coyne (left), Yuriko Yamaguchi (top), and Ursula von Rydingsvard (back)

FY24 Year in Review

A New NMWA

July 1, 2023–June 30, 2024

// FROM THE CHAIR OF THE BOARD & THE DIRECTOR

Dear Members and Friends of NMWA,

As we reflect on the recent year at NMWA and reopening from our ambitious renovation, we have so much to be grateful for and proud of.

Up to the moment we reopened our doors in October 2023, we were busy preparing the building for visitors. With the support of more than 1,100 capital campaign donors, we achieved the goals of our Space to Soar campaign and welcomed crowds of thrilled guests. A year later, the beautifully renewed and re-envisioned building provides a springboard for our future.

Our warmest, most enthusiastic thanks go to the extraordinary friends who supported the renovation. As you will read in these pages, the exhibitions and programs of the recent year brought our plans to life: from large-scale sculpture in *The Sky's the Limit*, in an installation that would not have been possible before the renovation, to an immersive theater that showed off our technological upgrades, to a refurbished Mars Performance Hall, to a totally re-envisioned fourth floor with our new Logan Learning Commons. *New Worlds: Women to Watch 2024* continued a longstanding series with our national and international outreach committees, some of our most committed and dynamic partners. Meanwhile, visitors flocked to programs such as NMWA Nights, pursued research in the library, attended hands-on workshops in the Susan Swartz Studio, and so much more.

As we enthusiastically embark on a new chapter, our advocacy for gender equity in the arts always continues. Thank you for sharing our belief in NMWA's mission and bright future!

Winton S. Holladay
Chair of the Board

Susan Fisher Sterling
The Alice West Director

After a two-year, top-to-bottom renovation, the museum's transformed building opened to the public on Saturday, October 21, 2023. To ring in the occasion, the open-house weekend featured celebratory events including poetry, music, dance, and art-making. Over the opening days, our new Visitor Services team greeted more than 2,250 guests—who were awed by the reimagined space—and the weekend's energy set the tone for a lively, busy year of art and programs.

Year at a glance:

- NMWA's reopening garnered press coverage by more than 350 outlets, including the *New York Times*, *Washington Post*, *Vanity Fair*, *People*, and special segments on *PBS NewsHour*, *CBS Sunday Morning*, and NPR.
- 56,755 people visited the museum between October 2023 and June 2024, a 101% increase from before the COVID-19 pandemic and renovation.
- Visitors loved the museum's technological enhancements. A new touchscreen table in the collection galleries invites guests to discover connections between artworks across time, medium, and geography. Visitors used it to view artworks more than 15,000 times.
- More than 7,100 audience members enjoyed education programs such as tours, talks, workshops, and art-making.

There's No Place Like Home

The renovated building expanded NMWA's gallery space, adding structural capabilities and updated technology to enable impressive inaugural exhibitions. In the first-floor Teresa Lozano Long Gallery, the immersive video installation ***In Focus: Artists at Work*** greets visitors and introduces NMWA's mission through the stories of eight contemporary women artists in



PHOTO BY TONY POWELL

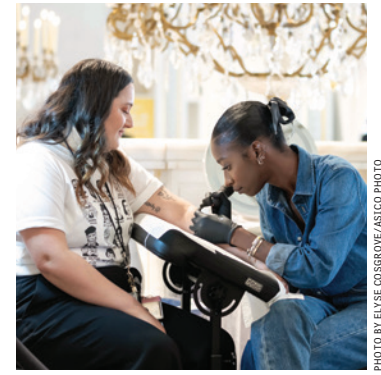


PHOTO BY ELYSE COSGROVE/ASICO PHOTO



PHOTO BY JOY ASICO-SMITH

NMWA's collection. In short, powerful videos, Ambreen Butt, Sonya Clark, Colette Fu, the Guerrilla Girls, Graciela Iturbide, Delita Martin, Rania Matar, and Alison Saar describe their artistic practices in their own words, affording viewers an intimate understanding of the work. In May, the video series, which is also available on YouTube, was named a 2024 Webby Awards Honoree, reaching an even wider audience.

Contemporary sculpture took center stage in *The Sky's the Limit*. Visitors were enthralled by large-scale works that dangled from the ceiling and cascaded down walls. This dramatic exhibition would not have been possible in the building before its renovation: new infrastructure allows curators more flexibility in planning installations. *The Sky's the Limit* debuted several collection works never before exhibited at NMWA, including a 164-foot-long abstract photograph by Mariah Robertson, a sparkling, subtly shimmering sculpture by Beatriz Milhazes, and a showstopping chandelier by Joana Vasconcelos that combines crocheted wool and Murano glass.

On the fourth floor, within the Gloria and Dan Logan Learning Commons, the brand-new MaryRoss Taylor Galleries featured three exhibitions focused on key strengths in NMWA's collection:

- **Hung Liu: Making History** presented Liu's poignant "weeping realist" portraits, through works on paper and major paintings.
- **Holding Ground: Artists' Books for the National Museum of Women in the Arts** highlighted nine new works by celebrated book artists.
- **Impressive: Antoinette Bouzonnet-Stella** featured a

fascinating series of twenty-five classical prints by the seventeenth-century French artist.

Visitors enjoyed the brand-new galleries—more space dedicated to NMWA's mission—as well as the breadth of these exhibitions.

In the third-floor galleries, the ongoing collection installation **Remix** presents familiar favorites and never-before-exhibited works. A joyous life-sized sculpture by Niki de Saint Phalle, *Pregnant Nana* (1995), greets visitors as they enter. The new floor plan features extended sightlines and open niches: gallery-goers can catch a long-distance glimpse of Deborah Butterfield's large-scale horse sculpture *Big Horn* (2006); spend time with arresting portraits by Delita Martin, May Stevens, and Gwen John; and delve into NMWA's wide-ranging collection of photography by Rania Matar, Berenice Abbott, and Yevonde, among many others. Guests enjoy discovering connections among artworks in thematic groupings, in some cases anchored by a medium and in others by a shared hue or idea.

Meanwhile, thirteen other NMWA works traveled to special exhibitions around the world, sharing the museum's holdings with new audiences. Lavinia Fontana's *Portrait of Costanza Alidosi* (ca. 1595) featured in exhibitions at the National Gallery of Ireland, Art Gallery of Ontario, and Baltimore Museum of Art. Louise Abbéma's painting *A Game of Croquet* (1872) traveled to Musée Marmottan Monet in Paris, in an exhibition—coinciding with the summer Olympics in Paris—that explored the visual history of sports.

Rooted in Place

Throughout the inaugural year, visitors enjoyed innovative programs and events connected to NMWA's mission and exhibitions. The building's revamped spaces not only hosted returning signature programs—they also inspired exciting new offerings that amplify the voices of artists.

A key addition from NMWA's renovation is the brand-new Susan Swartz Studio. This flexible classroom features sinks, movable tables, storage for art supplies, and technology for presentations. Audiences and museum educators alike enjoyed using the space to try out hands-on workshops, new programs, lectures, and more. A new Open Studio series engages visitors with drop-in art-making during Free Community Days. Nearly 1,600 guests attended sixteen sessions—making buttons, watercolor paintings, felt bowls, beaded pins, and other creations—inspired by works in the museum's collection.

The studio also enabled a reinvigorated schedule of Firsthand Experience workshops, a longstanding, popular series. Across four events, artists Adjoa Burrowes, Jamila Felton, Robin Ha, and Jen White-Johnson taught learners how to make zines, decorative papers, artists' books, and monotypes. One participant said, "I felt welcome as a beginner to a great experience where I actually made art. The instructor,

"Even for a correspondent with a keen interest in feminist art history, NMWA's inaugural shows are a revelation."

SARAH CASCONE FOR ARTNET

educators, and fellow attendees were very helpful."

Educators and docents brought NMWA's art and exhibitions to life via engaging tours:

- New daily drop-in tours engaged **1,066** people.
- More than **4,190** guests attended Collection Highlights Tours and exhibition tours. Of these, thirty-four tours were for school and youth groups comprising 771 children and 113 chaperones.

A new program series, The Bigger Picture, combined in-depth lectures with conversations in the galleries. These programs explored art from the sixteenth century to today through the museum's collection: Seventy-two participants joined across five programs.

The **Women, Arts, and Social Change** (WASC) public programs initiative also debuted new series and restarted signature favorites, welcoming more than 3,320 audience members across eighteen events. Creative's Keynote, a new

Opposite, clockwise: D.C. Mayor Muriel Bowser; NMWA Trustee Gina F. Adams; Board Chair Winton Holladay; Board President Susan Goldberg, NMWA Director Susan Fisher Sterling; and Larry Di Rita of Bank of America of Greater Washington, sponsor of the public Grand Reopening day, cut the ribbon to open NMWA to visitors

On NMWA's public reopening day, six museum staff members (including Social Media Specialist Paris Valladares, left) got NMWA-inspired tattoos from artist Bibi Abelle

The collection installation features the "Create Connections" interactive touchscreen kiosk, where visitors can discover common threads among diverse works of art

Right: In *The Sky's the Limit*, Mariah Robertson's 164-foot-long photograph 9 (2011) looped and draped through the gallery



PHOTO BY ELYSE COSGROVE/ASICO PHOTO

WOMEN IN THE ARTS



guest-speaker program celebrating high-achieving artists and creatives, featured British art historian Katy Hessel in November and curator Cecilia Alemani in March. Alemani talked about her experience curating the 2022 Venice Biennale, which included an unprecedented number of women and nonbinary artists. Discussing recent strides and struggles in efforts to advance gender equity in the arts, she said, “We should be grateful for the work that museums [like NMWA] do for our society.” Guests enjoyed the programs in NMWA’s upgraded, completely refurbished Mars Performance Hall, which features plush seats and state-of-the-art technology.

The popular Fresh Talk series returned with three forward-thinking conversations. “Digital Futures” featured artists and creators who specialize in digital art and currency. “Conscious Creators,” in tandem with NMWA’s annual Makers’ Market, focused on ethical production and sustainability by artists, business owners, and creators. “Influence and Collecting” featured collectors discussing gender equity in private and public collections.

January brought the debut of a lively and popular new monthly late-hours series, NMWA Nights, which features activities and activations throughout the museum. Each evening featured a guiding theme, appearances and events from community partners, music, art-making, creative cocktails and mocktails, and spotlight conversations in the galleries. In total, more than 1,860 attendees enjoyed the lively energy of each sold-out event. Partnerships and high-lights—drag kings, DJs, a pop-up library, a clothing swap, and more—have surprised and delighted NMWA Nights attendees.

In the beautifully redesigned **Betty Boyd Dettre Library and Research Center** (LRC), staff welcomed nearly 4,000 visitors to browse the collections, including 25,000 books

“I was thrilled to have participated in workshops led by so many professional artists, along with the phenomenal staff from NMWA, who were so generous in sharing their knowledge.”

PARTICIPANT, VIRTUAL EDUCATOR SUMMER CAMP

and print resources. The busy year featured scholarship and public engagement:

- Twenty-eight people booked special research visits, and the LRC fulfilled 191 reference requests.
- The collection continued to grow with 160 new acquisitions, including books, zines, artists’ books, and other publications.
- Curated book displays celebrate special exhibitions and the collection.

The public engaged with library resources through tours and special programs. LRC staff hosted special tours for visitors from the Smithsonian Advisory Board, Bainbridge Island Museum of Art, Museo Nacional de Arte de Cataluña, the District of Columbia Library Association, and George Washington University, among others. During the reopening celebrations, women writers from *Ars Poetica* wrote personalized typewriter poems for attendees. Programs throughout the year featured *Holding Ground* book artists,

Opposite: On social media, visitors use the hashtag #NMWAnow to share their snapshots, selfies, and stories

and a pop-up collaboration with Black Art Library was a highlight of February's NMWA Nights event.

Laying It All Online

NMWA's digital platforms amplified our art and programs to audiences near and far. In the recent year:

- The website received 1.2 million visits from 860,400 users, a more than 60% increase from the previous year.
- The percentage of digital users from Washington, D.C., increased by 287% as local audiences planned their visits.
- NMWA's social media posts received 8.7 million impressions across Instagram, Facebook, and X (formerly Twitter).
- NMWA's Instagram account gained 18,451 followers, and the museum's new TikTok account garnered 50,000 views across fifteen videos.

Guests and partner institutions alike joined in for a celebratory social media campaign, #NMWAnow. Upon the museum's reopening, NMWA held a photo contest inviting visitors to post images using the hashtag, which is now an evergreen tag for patrons to share their visits. Additional social media collaborations included partnerships with the National Gallery of Art, *Life* magazine, Metropolitan Museum of Art, New-York Historical Society, and International Spy Museum.

Above: Who is . . . Leon Trotsky? NMWA's Frida Kahlo painting, *Self-Portrait Dedicated to Leon Trotsky* (1937), was the subject of a question on *Jeopardy!* in June 2024

Right: In the brand-new Susan Swartz Studio, guests gather, learn, and make art during NMWA Nights events, workshops, and Open Studio sessions

Meanwhile, the museum's popular virtual programs—refined in recent years and beloved by far-flung NMWA fans—continued to welcome participants from around the world. Highlights included programs tailored to educators as well as broad audiences:

- In July 2023, 265 educators attended the museum's fourth annual Virtual Educator Summer Camp. Campers represented twenty-two states, Washington, D.C., and seven countries including Australia, Bahrain, Bermuda, Canada, Mexico, Qatar, and Spain. Across six sessions, educators and guest artists introduced participants to historical and contemporary women artists and enjoyed experimental making and close looking.

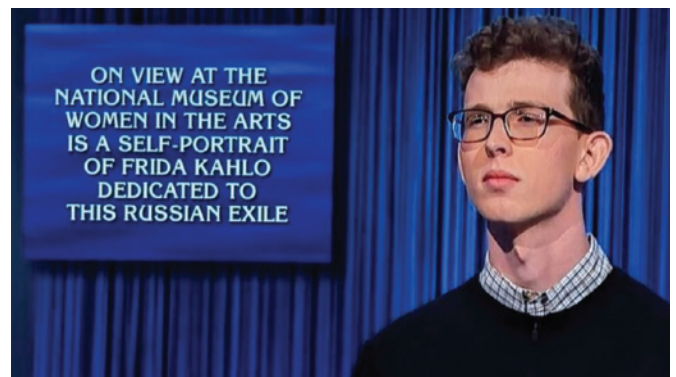


PHOTO BY JADA IMANI

“It’s hard to think of a finer example of the museum’s execution of its . . . role as the first museum in the world solely dedicated to championing women through the arts than *New Worlds*.”

BRIAN P. KELLY
FOR THE *WALL STREET JOURNAL*

At the May NMWA Nights event, a guest explores a *New Worlds* gallery with art by Alexis McGrigg (background) and Rajyashri Goody (foreground)



PHOTO BY DEREK BAKER

- Audiences adored NMWA’s longstanding Art Chat series, which held seventeen events with 470 total attendees.

In 2024, NMWA’s **#5WomenArtists** campaign focused on disability activism and advocacy in the arts. The museum’s social media channels featured local organizations centering accessibility, collection artists who have experienced a form of disability, and artists who engage in disability activism. Local photographer Sophie Lasher took over NMWA’s Instagram account to tour the museum from the perspective of a visitor with autism and ADHD. On the blog, art historians who research accessibility in art history and design shared their work. The 2024 #5WomenArtists campaign reached an estimated 33 million people, with 626,000 interactions and 3,911 mentions.

A Whole New World

In April, *New Worlds: Women to Watch 2024* opened to great fanfare. It was the largest iteration of the signature exhibition series, a dynamic collaboration between NMWA and its national and international outreach committees. *New Worlds* featured twenty-eight women artists from around the globe whose works envisioned new realities, responding to a world transformed by a global pandemic, advocacy for social reform, and political division.

Programming convened artists and engaged our audience to illuminate the exhibition:

- Six virtual artist panel discussions, open exclusively to members, featured twenty-four *New Worlds* artists. Nearly 400 members attended the programs.
- At a NMWA Nights bash in May, attendees wore costumes inspired by the exhibition’s theme.

Over the two-day committee conference coinciding with the exhibition’s opening, 110 representatives from twenty-five of the museum’s thirty-one national and international outreach committees came together at NMWA. Members toured *New Worlds* and the newly renovated building; exchanged ideas during panels focusing on programming, fundraising, and advocacy; networked with each other and NMWA stakeholders; and attended receptions at the residences of the French and British ambassadors. The formal conference program concluded with the opening reception of *New Worlds*.

Thank you!

Members and donors made our reopening year an exciting success. More than 11,000 generous supporters—from all fifty U.S. states and twenty countries—helped usher NMWA into its new era. We were thrilled to host nearly 1,200 guests during seven members-only events in the building, and we welcomed 800 more via virtual programs. During this banner year, we were proud to see that we kept the support of 3,000 charter members, who have sustained the museum for more than thirty years, as we welcomed more than 1,300 new supporters.

As we move forward with the momentum of this groundbreaking year, we are grateful for your partnership. Your support means so much in shaping NMWA’s bright future and ensures that there will always be a place for champions of gender equity in the arts.

// Alicia Gregory is assistant editor at the National Museum of Women in the Arts. Staff members across the institution contributed to this report.

Financial Statements

Statements of Financial Position

| | FY24 | FY23 |
|---|-----------------------|-----------------------|
| Assets | | |
| Cash | \$ 12,269,797 | \$ 13,869,053 |
| Other current | 4,837,978 | 3,758,886 |
| Total current assets | 17,107,774 | 17,627,939 |
| Net property and equipment | 67,002,922 | 57,386,105 |
| Investments | 108,238,977 | 94,587,499 |
| Net Pledges Receivable | 3,400,410 | 2,464,030 |
| Total Assets | \$ 195,750,083 | \$ 172,065,573 |
| Liabilities and net assets | | |
| Payables accruals and deposits | \$ 2,410,748 | \$ 6,795,201 |
| Long term liabilities | 33,232,838 | 11,006,064 |
| Total liabilities | 35,643,586 | 17,801,265 |
| Net assets | 160,106,497 | 154,264,308 |
| Total Liabilities and Net Assets | \$ 195,750,083 | \$ 172,065,573 |

Statements of Activities

| | FY24 | FY23 |
|--|----------------|----------------|
| Support and revenue: | | |
| Grants and contributions | \$ 54,943,102 | \$ 21,495,800 |
| Membership Income | 1,475,051 | 1,189,372 |
| Earned Income | 2,102,962 | 533,058 |
| Net Investment Income | 5,209,472 | 6,046,994 |
| Total support and revenue | 63,730,587 | 29,265,224 |
| Expenses: | | |
| Program services | 9,767,816 | 7,190,729 |
| Supporting services | 8,109,857 | 3,775,244 |
| Cost of sales and auxiliary activities | 494,746 | 703,698 |
| Total expenses | 18,372,419 | 11,669,671 |
| Change in net assets before other item | 45,358,168 | 17,595,553 |
| Forgiveness of Debt | - | - |
| Change in net assets | 45,358,168 | 17,595,553 |
| Net assets, beginning of year | 154,264,308 | 136,668,755 |
| Net assets, end of year | \$ 199,622,476 | \$ 154,264,308 |

Statements of Cash Flows

| | FY24 | FY23 |
|---|---------------|---------------|
| Cash flows from operating activities: | | |
| Cash received from donors | \$ 54,943,102 | \$ 23,285,936 |
| Cash received from program fees and earned income | 701,430 | 329,970 |
| Cash received from membership and dues | 1,959,737 | 1,405,101 |
| Cash payments to employees | (7,066,779) | (4,221,921) |
| Cash payments to vendors | (28,533,542) | (36,780,803) |
| Net cash (used) or provided by operating activities | 22,003,948 | (15,981,717) |
| Cash flows from investing activities | | |
| Cash received from investment income | 14,484,498 | (21,316,664) |
| Cash payments for investment costs | (414,516) | (198,590) |
| Net cash (used) or provided by investing activities | 14,069,982 | (21,515,254) |
| Cash flows from financing activities: | | |
| Cash received from borrowing | 33,308,418 | 8,427,900 |
| Cash payment of bond fees | - | - |
| Net cash (used) or provided by financing activities | 33,308,418 | 8,427,900 |
| Net increase in cash and cash equivalents | 69,382,348 | (29,069,071) |
| Cash and cash equivalents at beginning of the year | 13,869,053 | 42,938,124 |
| Cash and cash equivalents, end of year | \$ 83,251,401 | \$ 13,869,053 |

Highlights from the Past Year

// Virginia Treanor, M. G. Vallacchi, and Kathryn Wat

During NMWA's landmark reopening year, nearly one hundred acquisitions strengthened the museum's collection. In addition to the selections featured here, highlights include photographs by Berenice Abbott, Renee Cox, Ann Hamilton, Marta María Pérez Bravo, and Gillian Wearing; works on paper by Corita Kent and Nellie Mae Rowe; a painting by Hung Liu; and a sculpture by Deborah Butterfield. These works of art, donated by long-time patrons and new friends, will delight visitors and bolster NMWA's programming in the months and years to come.

Alice Austen

One of the earliest women photographers to work outside of the studio and in the public eye, Alice Austen (1866–1952) photographed people in her hometown on Staten Island and, later, on the streets of New York City. She learned the principles of photography, including how to process glass plate negatives, from an uncle who taught chemistry at Rutgers University. She also traveled widely, photographing the World's Columbian Exposition in Chicago in 1893 and the Pan-American Exposition in Buffalo in 1901.

Austen spent fifty-six years in a loving relationship with her partner Gertrude Tate, until they were evicted from their home after the stock market crash in 1929. Today, that home, Clear Comfort, is the

The museum's collection grew by 97 works during the recent year: 87 photographs, 4 prints, 3 drawings, 1 painting, 1 sculpture, and 1 mixed-media work.

site of the Alice Austen House, a museum and nationally designated site of LGBTQ+ history. *Egg Stand Group* (1895) is part of a recent gift of twenty-five works by Austen to enter NMWA's



PHOTO BY LEE STALSWORTH

collection, enabling the museum to share her art and her story.

L. C. Armstrong

L. C. Armstrong (b. 1954) is known for large-scale imaginary

landscapes with luminous colors and enormous, looming flowers. With saturated hues and dramatic shifts in scale, her twelve-foot-wide triptych *Sunset Over Sea of Bliss* (2001) depicts



PHOTO BY LEE STALSWORTH

Alice Austen, *Egg Stand Group*, 1895 (printed 1970s); Gelatin silver print, 10 ¼ x 13 ¾ in.; NMWA, Gift of Arthur B. Kennickell



a characteristic dream-like setting. Here, an awe-inspiring sunset is dominated by colossal flowers, while minute human figures blissfully swim in a distant sea.

In startling contrast to the calming view, the flowers' stems appear as jagged, dark lines, which Armstrong creates using bomb fuse. Carefully, she arranges gunpowder and lights it on fire, burning the surface of the painting to leave unruly lines. This juxtaposition highlights her desire to address the detrimental impact of humans on the natural world. Armstrong covers these paintings in resin to achieve a high shine, evoking the influence of the Southern California-based "finish fetish" movement.

Clare Rojas

In the early 2000s, Clare Rojas (b. 1976) was part of the Mission School, a group of street art- and folk art-inspired artists working in and around

San Francisco's Mission District. Combining flat planes of color with vivid patterns reminiscent of quilt work and paper-cutting, Rojas's narrative paintings and prints focus on a range of feminist themes, including gender stereotyping.

In *Boundary Lines* (2009), the artist tweaks conventional ideas about feminine gentility. The demurely styled figure in the center of the image is enticed by the red poppies just outside the arc of blue lines at her feet. Yet she suspends her right hand, refraining from reaching out further. Rojas notes that the composition exemplifies her strong instinct for self-protection: "Poisonous people, poisonous imagery, poisonous poison. You're just trying to protect yourself from it . . . no matter how alluring it may seem."

// Virginia Treanor is senior curator, M. G. Vallacchi is curatorial assistant, and Kathryn Wat is deputy director/ chief curator at the National Museum of Women in the Arts.



PHOTO BY LEE STALS WORTH

Clare Rojas, *Boundary Lines*, 2009; Color aquatint, spitbite aquatint, and sugar-tint etching on paper, 43½ x 35 in.; NMWA, Gift of Steven Scott, Baltimore, in memory of his graduate professor Dr. Elizabeth Johns

Supporting Roles

10

BOARD OF TRUSTEES

Winton S. Holladay—

Chair of the Board

Susan Goldberg—*President*

Lucretia Adymy Risoleo—

Treasurer and Finance Chair

Charlotte Buxton—*Secretary*

Karen Sonneborn—

Governance Chair

Susan Fisher Sterling—

*Alice West Director***

Pamela Parizek—*Audit Chair*

Marcia Myers Carlucci—

Building Chair

Amy Weiss—

Communications Chair

Ashley Davis—

Government Relations Chair

Nancy Nelson Stevenson—

Works of Art Chair

Diane Casey-Landry—

Investment Chair

Gina Adams, Janice Adams, Belinda de Gaudemar, Deborah Dingell, Martha Lyn Dippell, Nancy Duber, Susan Dunlevy, Anjali Gupta, Pamela Gwaltney, Eliza Holladay, Cindy Jones, Marlene Malek, Ann Walker Marchant, Jacqueline Badger Mars, Juliana May, Bonnie McElveen-Hunter, Stephanie Sale, Julie Sapone**, Alejandra Segura, Sheila Shaffer, Kathleen Elizabeth Springhorn, Annie Totah, Sarah Treco**, Sara M. Vance Waddell, Alice West, Patti White

** Ex-officio

NMWA ADVISORY BOARD

Sarah Bucknell Treco—*Chair*, Noreen Ackerman, Kathe Hicks Albrecht, Sunny Scully Alsup, Susan M. Ascher, Virginia Barbato, Jo Ann Barefoot, Gail Bassin, Arlene Begelman, Sue Ann Berlin, Catherine Little Bert, Brenda Bertholf, Caroline Boutté, Nancy Taylor Bubes, Deborah G. Carstens, Marcella Cohen, Marian Cohen, Donna Paolino Coia, Robyn D. Collins, Margaret Conklin, Lizette Corro, Elizabeth Crane, Lynn Finesilver Crystal, Elizabeth Cullen, Mary Lou Dauray, Verónica de Ferrero, Belinda de Gaudemar, Kitty de Isola, Michele De Nevers, Katy Graham Debost, Alexis Deutsch, Ellen Drew, Kenneth P. Dutter, Christine Edwards, Anne N. Edwards, Gerry Ehrlich,

Elva Ferrari-Graham, Chuck Fleischman, in honor of Lisa Claudy Fleischman, Charlotte K. Forster, Rosemarie C. Forsythe, Barbara S. Goldfarb, Sally Gries, Anjali Gupta, Ilene S. Gutman, Pamela Gwaltney, Florencia Helbling, Sue J. Henry, Katie Jacobs, Imogene Jensen, Jan Jessup, Alice Kaplan, Noriko Kashiwagi, Paulette Kessler, Arlene Fine Klepper, Doris Kloster, Carol Kolsky, Robin Rosa Laub, Elizabeth Leach, Cynthia Madden Leitner, Sarah H. Lisanby, M.D., Fred M. Levin, Bonnie Loeb, Gloria and Dan Logan, Angela M. LoRé, Clara M. Lovett, Joanne Ludovici, Marcia MacArthur, Linda Mann, C. Raymond Marvin, Rebecca Matejcek-Chang, Ellen Stirn Mavec, Dee Ann McIntyre, Cynthia McKee, Constance C. McPhee, Lorna Meyer Calas, Anu Mitra, Milica Mitrovich, Mary V. Mochary, Claudia Pensotti Mosca, Kay Woodward Olson, Nancy Olson, Monica T. O'Neill, Carol Parker, Anthony T. and Trisja Malisoff Podesta, Laurel Rafter, Lucy Rhame, Helena Ribe, Barbara Richter, Elizabeth Robinson, Tara Rudman, Stephanie Sale, Consuelo Salinas de Pareja, Steven Scott, Kathy Sierra, Ann Simon, Geri Skirkanich, Heidi Brake Smith, Dot Snyder, Denise Littlefield Sobel, Patti Amanda Spivey, Kathleen Elizabeth Springhorn, Pamela Stanger, Judith Karlen Stein, Sara Steinfeld, Jo Stribling, Christine Suppes, Susan Swartz, Cheryl S. Tague, Mahinder Tak, Judy Spence Tate, Lisa Cannon Taylor, MaryRoss Taylor, Brooke Taylor, Deborah Dunklin Tipton, Marichu Valencia, Sara M. Vance Waddell, Minal Vazirani, Victoria Vermes, Toni G. Verstandig, Virginia Voorhees, Paula S. Wallace, Harriet L. Warm, Krystyna Wasserman, Patti White, Tamara White, Carol Winer, Rhett D. Workman, Susan Zimny

SPACE TO SOAR CAPITAL CAMPAIGN

We wish to thank supporters of the Space to Soar capital campaign, whose generosity enabled the museum's major building renovation. Although we can only list donations of \$20,000 and above due to space limitations, we extend sincere gratitude to all donors.

\$15 million+

Wilhelmina C. and Wallace F. Holladay, Sr.*

\$5–\$14.9 million

Gloria and Dan Logan/Revada Foundation
Jacqueline Badger Mars

\$2–\$4.9 million

Marcia Myers Carlucci
Betty Boyd Dettre*
Events DC
Ann M. Farley Trust
Denise Littlefield Sobel
MaryRoss Taylor

\$1–\$1.9 million

Winton and Hap Holladay
Clara M. Lovett
Marlene A. Malek
Estate of Evelyn B. Metzger
Sue J. Henry and Carter G. Phillips
J. Christopher and Anne N. Reyes Foundation
San Francisco Advocacy Group
Dr. Alejandra Segura
Susan and Jim Swartz
The Texas Committee
Estate of Susan Wisherd

\$500,000–\$999,999

David Boies and Jonathan Schiller,
Mary Lou Dauray, DC Commission on the Arts and Humanities,
Martha Lyn Dippell and Daniel L. Korengold, Cindy and Evan Jones, Fred M. Levin in memory of Nancy Livingston Levin, The Honorable Mary V. Mochary, Sarah and Ross Perot Jr., Lucy S. Rhame, George and Patti White

\$250,000–\$499,999

Nancy and Marc Duber, Elva Ferrari-Graham, Jamie Gorelick and Richard Waldhorn, Institute of Museum and Library Services, Gloria Pieretti* in honor of the Testolin Pieretti Family, Linda Rabbitt and John Whalen Family Foundation, Sheila and Rick Shaffer, Geri O'Toole Skirkanich, Christine Suppes, Alice and Gordon* West Jr.

\$101,000–\$249,999

M. A. Ruda and Peter J. P. Brickfield*, Charlotte Forster,

Georgia Committee of NMWA, Anjali and Arun Gupta, Nancy Wood Moorman, Amanda and Curtis Polk, Laurel and John Rafter, Tara Rudman, Stephanie Wyndam Sale, Jayne Visser and Kristin Smith, Dana* and Jack Snyder, Susan and Scott Sterling

\$100,000

Janice and Harold L.* Adams, Arkansas State Committee, Amy and Bret Baier, Grace Bender, Charlotte Clay Buxton and Michael Buxton, The Morris and Gwendolyn Cafritz Foundation, Lorna Meyer Calas and Dennis Calas, Andrea and Richard Catania, Evonne C. and Robert T. Connolly, II, Ashley Davis and Joel Frushone, Lisa and Porter Dawson, Anne N. Edwards, FedEx/Gina Adams, Charles and Lisa Claudy Fleischman Family Fund, Helen Frankenthaler Foundation, Belinda de Gaudemar, Pamela Gwaltney, Laurie Sands Harrison, The Hayes Foundation, Diane Casey-Landry and Brock Landry, Mary Ann and Allen Lassiter, Lugano Diamonds, Kristen and George Lund, Bonnie McElveen-Hunter, Morgan Stanley, Northern Trust Company, Ohio Advisory Group, Kay Woodward Olson, Anthony T. and Trisja Malisoff Podesta, Lucretia Adymy Risoleo and Robert Risoleo, Jordan Schnitzer Family Foundation in Memory of Arlene Schnitzer, Karen and William Sonneborn, Kathleen Elizabeth Springhorn, Christoph and Pamela Stanger, Roger and Nancy Nelson Stevenson, Josephine L. and Thomas D.* Stribling, Leo Rosner Foundation/Bill Robbins, Judy and Charles Tate, Deborah Dunklin Tipton

\$50,000–\$99,999

Bank of America of Greater Washington, Deborah G. Carstens, Susan Goldberg and Geoffrey Etnire, Robin and Jay Hammer, Mr. and Mrs. Michael Reed Miller, Julie Packard, Sharon Rockefeller, Jean Hall and Thomas D. Rutherford, Jr., Beth W. Newburger Schwartz, Patti Amanda and Bruce Spivey, UK Friends of NMWA, Marichu C. Valencia and Donald J. Puglisi, Amy Weiss and Peter J. Kadzik

\$20,000–\$49,999

Gail D. Bassin, Joan Bialek and Louis Levitt, Katherine and David Bradley, Deborah Buck, Rose and Paul Carter, Marcy and Neil Cohen,

Robyn D. Collins, Liz and Tim Cullen, Karyn Frist, Jan Jessup, Alice D. Kaplan, Mr. and Mrs. Jim C. Langdon, Marcia MacArthur, Priscilla W. and Joe R. Martin, Robin Rosa Laub, Bonnie Loeb, Angela M. LoRé, Lowe Foundation, Dee Ann McIntyre, Mid-Atlantic Committee of NMWA, Monica O'Neill, Laura Perkins, Margaret H. and Jim Perkins, Mary Poetzlbauer, Dorothy and Ned Snyder, Alice M. Starr, Brooke and Heyward Taylor, Frances Luessenhop Usher, Sara M. and Michelle Vance Waddell, Courtney Johnson Walker, Velda Warner, Daisy Sloan White, Emily Gay* and Neville Gay Williams, Carol and Michael Winer, Carolyn and John Young

WITH THANKS

*The National Museum of Women in the Arts recognizes with gratitude the following donors who made contributions from July 1, 2023, to June 30, 2024. Your support enables NMWA to develop groundbreaking exhibitions, expand education, library, and outreach programs, and offer special events to the public. **Your contributions are critical to the museum's success!***

Although we can only list donations of \$500 and above due to space limitations, we are thankful for all of the museum's members and friends. Gifts to the Space to Soar capital campaign are listed

separately on page 26, and gifts to the Legacy of Women in the Arts endowment on page 30.

\$1 million+
Anonymous

\$500,000–\$999,999

Anonymous
In memory of S. Antoinette Hopkins

\$100,000–\$499,999

DC Commission on the Arts and Humanities
Jamie S. Gorelick and Richard E. Waldhorn
Denise Littlefield Sobel
U.S. Commission of Fine Arts and the National Capital Arts and Cultural Affairs Program
Patricia and George White

\$50,000–\$99,999

Anonymous, Alice L. Walton Foundation, Martha Lyn Dippell and Daniel L. Korengold, Anne N. Edwards, FedEx/Gina Adams, Institute of Museum and Library Services, Sarah Kennedy, Jacqueline Badger Mars, Revada Foundation of the Logan Family, Sharon and John Rockefeller, Ms. Cynthia Sears, Sheila and Richard Shaffer

\$25,000–\$49,999

Marcia Myers Carlucci, Carol Brown Goldberg and Henry Goldberg, Grunley Construction Co., The Hayes Foundation, Sue J. Henry and Carter G. Phillips, Winton and Hap Holladay, Japan Committee of NMWA, Leo Rosner Foundation, Inc., Clara M. Lovett,

Linda and Larry Mann, Milton and Dorothy Sarnoff Raymond Foundation, The Morris and Gwendolyn Cafritz Foundation, Diane E. Mularz*, National Endowment for the Arts, PECO Foundation, RBC Capital Markets, LLC, Stephanie Sale, Corey Sauer, Alejandra and Enrique Segura, Share Fund, Southern California State Committee of NMWA, Patti Amanda and Bruce Spivey, Susan Fisher Sterling and Scott Sterling, Paula S. Wallace/Savannah College of Art and Design, Wyoming State Committee of NMWA

\$15,000–\$24,999

Susan Ascher and Paul Kalb, Gail D. Bassin, Charlotte and Michael Buxton, Lorna Meyer Calas and Dennis Calas, Diane Casey-Landry and Brock Landry, Daniels Family Charitable Trust, Ashley Davis, Susan and Frank Dunlevy, Christine Edwards, The Gladys Krieble Delmas Foundation, Susan Goldberg, Pamela Gwaltney, June and Mike Beyer, Dee Ann McIntyre, Nancy Ann Neal, Carol and Gerry Parker, Amanda and Curtis Polk, Lucretia Adymy Risoleo and Robert S. Risoleo, Kathy Sierra, Karen and William Sonneborn, Mahinder and Sharad Tak, Carol and Michael Winer

\$10,000–\$14,999

Anonymous (4), Arizona Committee of NMWA, Jo Ann Barefoot, John and Karen Bates, Nancy Taylor Bubes and Alan Bubes, Deborah G.

Carstens, Maureen Chelius, Chile Committee of NMWA, Robyn D. Collins, Michele de Nevers, Nancy and Marc Duber, Alexine C. Jackson*, Elva Ferrari-Graham, Lisa Claudy Fleischman*, Michelle and Joshua Freeman, Robin and Jay Hammer, Hobson Lucas Family Foundation, Imogene Jensen, Cindy and Evan Jones, Rosalyn Levy Jonas, Sally and Christopher H. Jones, Carlene Carrasco Laughlin, LaVerna Hahn Charitable Trust, Bonnie Loeb, Angela M. LoRé, Marcia MacArthur, Marlene Malek, Dr. Kathleen A. Maloy and Ms. Heather L. Burns, Amanda Minami and the Minami Legacy Fund for the Arts, New York Committee of NMWA, Kay W. Olson, Alison and William Paley, Pennsylvania State Committee of NMWA, Laurel and John Rafter, Elizabeth S. Ray, Elizabeth Robinson, Tara Rudman, S&P Global, Samuel H. Kress Foundation, Geri Skirkanich, Marsha S. Soffer, Sony Corporation of America, Christoph and Pamela Stanger, Roger and Nancy Nelson Stevenson, Lucretia D. and William H.* Tanner, Judy S. Tate and Charles Tate, MaryRoss Taylor, Deborah Dunklin Tipton, UK Friends of NMWA, Marichu C. Valencia, Sara and Michelle Vance Waddell

\$5,000–\$9,999

Anonymous (3), Noreen M. Ackerman, Janice L. and Harold L. Adams, Mark and Kathe Albrecht, Argentina Committee of NMWA,



Guests were wowed by the inaugural exhibition *The Sky's the Limit*, which included art (pictured) by Rina Banerjee and Davina Semo

Anne E. Branch, Canada Committee of NMWA, Mary C. and Armeane M. Choksi, Marcy and Neil Cohen, Margaret Conklin and David Sabel, Katherine Conover-Keller and Fred Keller, Lizette Corro, Couture Circle, Sara Fagen, Sarah Farr, Stephanie Fein, Reide Garnett, Monica Graham, Ilene S. and Jeffrey S. Gutman, Carla Hay, Eliza and Addison Holladay, India Committee of NMWA, JM Zell Partners, Ltd., Pamela C. Johnson and the late Wesley King, Alice D. Kaplan, Kenneth and Lisa Kelley, Paulette and David Kessler, Sandra W. and James Langdon, Jr., Anne M. Larner and Robert J. Larner, Les Amis du NMWA, Fred M. Levin, The Shenson Foundation, Tabitha Soren Lewis, Kristen and George Lund, Marcia Mau and Frank Moy, Juliana E. May, Bonnie McElveen-Hunter and Bynum* Hunter, Alyssa K. Mertz and Susan K. Sovel, The Mill Foundation, LTD, Toni Ratner Miller, Leila W. Mischer, Barbara Mitchell, Sherrill A. Mulhern, Nancy Peery Marriott Foundation, Irene Natividad, Melanie Nussdorf, James O'Donnell and Ann Okerson, Regina M. Oxley-Burley*, Nnenna Ella Peters, Planet Saffron, Inc., Dr. Michael and Mrs. Mahy Polymeropoulos, Thierry Georges Porte, Sarah M. Pritchard, Martha A. Prumers, Barry R. Feirstein Rhinebeck, Kim Ross, San Francisco Advocacy for NMWA, Joyce E. Scafe, Patricia Schade, Sunny Scully Alsup and William Alsup, Esther Simplot, Judy W. Soley, Kathleen Elizabeth Springhorn, Sara Steinfeld, Christine Suppes, Annie S. Totah, Amy Weiss, Marie Wilkie, Karen Lerohl Wilson in honor of Kathryn Keany, Bridgit Wolf, Mr. and Mrs. Donald Wolf, Robin Young

\$2,500–\$4,999

Arkansas Committee of NMWA, Arlene Begelman, Martha Bergman, Sue Ann and Ken Berlin, Catherine Bert and Arthur Bert, M.D., Sharon K. Bigot, Elizabeth Birka-White, Susan Borkin, Bobbe J. Bridge, Katherine and Richard Bruch, Yolanda Bruno, Lisa Cannon and Charles Edison Taylor, Dr. Mary A. Carnell and Dr. Agnes Guyon, Bonnie Carroll, Marian Cohen, Donna Paolino Coia and Arthur Coia, Colorado State Committee of NMWA, Elizabeth Crane, Lynn Finesilver Crystal,

Liz Cullen, Doloras E. Davison, Kitty de Isola and Max Cambana, Katy Graham Debost. Carol Denise and Martin Paul Kolsky, Sara Jo Victors Dew, Kenneth P. Dutter, Gerry Ehrlich, Barbara L. Elky, Dawn Marie Espinoza, Ginny Feldman, Joyce M. Flaherty, Charlene Fergie, Charlotte K. Forster, Barbara S. Goldfarb, Greater Kansas City Area Committee of NMWA, Sally Gries, Akhilesh Gupta, Susan Hairston, Jean Hall and Thomas D. Rutherford, Jr., Florencia Helbling, Colleen Hess, Michelle Howard, Marsha Renee Jespersen, Jan V. Jessup, Kristina Johnson, Margaret M. Johnston, Susan W. Klaveness, Daniel Harold Klebes, Arlene Fine Klepper and Martin Klepper, Doris Kloster, Rupal Lamorena, Nelleke Langhout-Nix*, Robin Rosa Laub, Margaret and Emily Lenzner, Sandy Liotta, Sarah H. Lisanby, M.D., The Louis J. Kuriansky Foundation, Inc., Joanne Lyman, C. Raymond Marvin, Rebecca Matejcek-Chang, Ellen Stirn Mavec, Cynthia A. McKee, Maria Luisa Martin McLean, Mississippi State Committee of NMWA, Dr. Anu M. Mitra, The Honorable Mary V. Mochary, Sally Mott and John K. Freeman, Lola M. Muller, New Mexico State Committee of NMWA, Julie A. O'Halloran, Ohio Advisory Group of NMWA, Mary B. Olch, Jane Olin, Nancy and Eric Olson, Monica T. O'Neill, Rebecca Owen, P. Koshland, Erika Pearsall and Edgar Jannotta, Ann Marie Pinto, Drina Rendic, Helena Ribe, Barbara Richter, Sandi Riggs, SMBC Global Foundation, Inc, Ann and Steve Ryan, Scanlan Theodore Americas, LLC, Dr. Cynthia M. Shewan, Carolyn Sunny Shine, Lucille Ellis Simon Foundation, Heidi Brake Smith, Lera Smith, Ph.D. and Steven Smith, Dot Snyder, Linda Watkins Sorkin, Dr. Judith K Stein, Susan and Jim Swartz, Cheryl S. Tague, Brooke Taylor, Sarah Bucknell Treco, Elzbieta Vande Sande, Victoria Vermes, Virginia Voorhees, Harriet L. Warm, Washington State Committee of NMWA, Krystyna Wasserman, Carolyn Weller

\$1,000–\$2,499

Anonymous (3), Diane Abeloff, Ms. Margery Al-Chalabi, Priscilla A. Andre-Colton, Gary Arlen, Joyce Atleson and Paul Davis,

Leigh Bailey, Therese Baker-Degler, Jaquita Deann Ball, Virginia Barbato, Linda C. Barclay, Sandra Bass, Linda Beers, Suzanne and Stanley Bergen, Sydney Bergen, Brenda Bertholf, Joyce Blalock, Lynne Blei, Sandra Bloch, Veronica Brady, Alexandra Brookshire and Bert Green, Katherine S. Brooks, Annalee M. Bundy, Charlotte Anne Cameron, Brenda Daley Carr, Susan Kennon Carruth, Casey and Jack Carsten, Catherine Pendola Tringali Fund, Bailey Childers, Janet and Maarten Chrispeels, Mary and James Clark, Barbara L. Cohen, Elinor Coleman and David Sparkman, Ana and Paul Collins, Carolyn L. Collins, Wylene R. Commander, Savannah Conheady, Deborah W. Cowan, Kristi West Craig, Beverly Dale, Dr. Linda Daniel, Joan Danziger, Peggy and Kirk Davenport, Paul Davis, Belinda de Gaudemar, Pam Del Duca, Audrey Demas, Nancy Donovan, Barbara Douglas, Mary Evans, Kaywin Feldman and Jim Lutz, Jill Ferrera, Jean Fishbeck and Judith Popovich, Joan Fleischman, Karen K. Fore, Barbara L. Francis and Robert Musser, Daun and Walter Frankland, Susan S. French, The French-American Cultural Foundation, Nancy Fulton, Carol and William Gay, Pamela and

Scott Gibson, Sandy Gold, William and Linda Goldman, Jim Goldschmidt, Tom and Bobbie Gottschalk, Paula K. Graham, The Greene-Milstein Family Foundation, Anisha K. Gupta, Lorraine Gyauch, Elizabeth and Peter Haaker, June Hajjar, Alan and Bonnie Hammerschlag, Katharine Hammond, Barbara and Greg Hanselman, Jeannine Audrey Hascall, Jo M. Hendrickson, Patti Henshel, Vicki S Heyman, Anne Higonnet, Michele Hilmes and Bruce Croushore, Nancy Hirshbein and Robert Roche, Gwen and Stu Holliday, Lisa Hsia, Karen M. Humphrey, Marissa A. and James Huttinger, Italy Committee of NMWA, ITO EN, Madelyn Jennings, Nancy L. Johnson, Elisabeth Joung, Junior League of Washington, Inc., Ann Kaplan, MaryJo Keefe, Laura E. Kennedy, Susan Kennedy and Julie Hewitt, Arthur Kennickell, Idaclaire Kerwin, Carrie Kirkpatrick, Kathleen Knepper, Carole Kunstadt, Ms. Leanne Lachman, Kay Lachter, Laura Ladd, Mary Lou Laprade, Ruth and Edward Legum, James H. Lemon, Jr., Marta Van Loan, Liz Minyard Lokey, Sandra L. Mabry, Marcia L. MacHarg, Esq, Linda L. Mayer, Diane McGrory, Laurie E. McNeil and Patrick W. Wallace,



Helen McNiell and Antonio Alcalá, Elizabeth Marchut Michalski, Jacqui Michel, Joanna Miller, Seema Mishra, Janet Mohle-Boetani, Kristine Morris, Marcia Morse, Helen Mulkeen, Patrick Myers, Linda Myers, Melissa Nabors, Suzanne S. Naples, Lynn Nicoletta, Linda P. Nortillo, Jill Marie Norton, Bu Nygrens, Jane Oberwager, Mike O'Connor, Yvonne S. Olson, Carol J. Olson, Margaret G. Orlett, Maureen A. Orth, Martha Farish Oti, Sophia Jessica Pantelis, Pamela J. Parizek, Elizabeth Ragland Park, Daniel J. Pattenden, Lori Peters and Justin Bukowski, Simona Petrova-Vassileva, Susan Phifer, Yvonne Pine, Jacquelyn Pogue, William Pollak, Miriam Ramos, Linda J. Ravdin, Jean Renfield-Miller, Susan Resnik, Akeila Richter, Eleanor Ridley, Nina Righter and Glenn Shambroom, Jean W. Roach, Mr. Markley Roberts, Mary Anne Rogers, Grace Roman, Lady Blanka A. Rosenstiel, Irene Roth and Vicken Poochikian, Victoria Ruehlin, Julie and Captain David Sapone, Christopher S. Sargent, Anna Scalamogna, Sandra K. Schlachtmeyer, Anikó G. Schott, Elizabeth Schrafft, Edwina Sebest, Catherine Seibert and Frederick Wright, Emily and Paul Singer, Linda M. Skare, F. Louise and Wayne Smith, Ann M. Stack, Richard E. Stafford, Elizabeth and Eric Stahl, Dorothy W. Stapleton, Alice and Ken* Starr, Lauren States and Kenneth Creary, Anne Stetson, Gael Storck and Thomas Lykens, Douglas K. Struck, Henry and Virginia Sweatt, Roselyne Chroman Swig, Vivien Szu-Tu, Elizabeth Taylor, Amanda M. Termuhlen, Abigail B. Test, Demara Titzer, Julie Towell, Patt Trama, Micaela A. Trumbull, Kathryn Turley-Sonne, Olimpia Velez, HelenBeth Vilcek, Candace King Weir, Elizabeth Weitzman, Carolyn L. Wheeler, B. Joan White, Dr. Tamara White, Diana Whitney, Virginia and Robert Wierman, Sandra and Jon Willen, Gayle Wilson, Lucy and Scott Wilson, Marcia Wilson, Britt-Mari Wisniewski, Christopher and Beverly With, Wanda C. Wood, Ret., Dorothy and Kenneth Woodcock, Rhett Workman, Soon-Young Yoon, Donna York, Carolyn and John Young, Arlene K. Zimny in honor of Ilene Gutman and Susan Zimny, Claudia Zucker

\$500–\$999

Anonymous, Luanne Adams, Erika Adkins and Joseph Giulianielli, Adstra, Inc., Adventures in Art, Francesca Anderson, Sara J. Anderson, Antonio Antonio, Jamie Austin, Eve Bachrach, Linda W. Banton, Rosamond A. Barber, Rebecca A. Barclay, Marie A. Barton, Johanna Baruch, Lori Lennon Bassman, Mary Lynn Bergman-Rallis, Michael Berman, Elizabeth S. Blake, Judith Block, Terrence Dale Bogard, Deanna Boling, Jacqueline Bontemps and Alease Madden, Kelly Bransome, Gwen Brewer, Margo A. Brinton and Eldon E. Park, Meredith M. Broadbent, Victoria T. Broadie, Kathleen Buckley, Beth B. Buehlmann, Moyra Byrne, Wendyn Cadden, Phyllis Cairns, Juan Cameron and Martha Richardson, Anne and Denis Cardone, Kathleen Carey, Ann Carlson, Patrwicia Carlton and Margaret Detwiler, Cynthia Carr and Mark Scherer, Karen Castle, CHS Fund, Tracy Cichy, Mary G. Clark, Richard H. Cleva, Lynn F. H. Cline, Elizabeth and Todd Clist, The Cormac and Moira O'Malley Fund, Shelley Cohn, Josephine C. Conlon, Coleman J. Conroy, Claire Cook, James Cowlin, Sally Cox, Tina Curtis, Emilie David, Charlotte M. Davis, EdD, Susan A. Davis, Barbara Denrich, Karen R. Detweiler, Jerry and Carol Doctrow, Denise Dowd and Jill Burton, Susanne E. and Clayton W. Eisinger, Donna L. Elliott, Renata Engler and J.D. Nichols, Deborah and Philip English, Loretta Fabricant, Sandy Falloon, Jill Fatzler, Joyce Itkin Figel and Brad Figel, Denise J. Fiore, Nancy Forbes, Constance S. and Joseph P.* Franklin, Deborah S. Freedman, Helene Freeman, Linda Frey, Virginia Elkin Fuller, Joseph L. Gastwirth, Gather RI, Judith Gibble, Elisa B. Glazer, Marilyn E. Goldfeather, Ruth Goldstein, Synnove Granholm and Dan Richard, Barbara and Rich Gray, Catherine A. Green, Deborah Greenstein, Kathleen Grossman, Mary Augustiny, Constance Haaser, Carolyn J. Hall, Thomas Hammerstrom, Barbara Harsha, Jeanne Harvey, Janet Ruth Heller, Jo Hamby, Elizabeth Hemminger, Madge Green Henry, Lois Herr, Ann Hill and Sabina Schiller, Lucia M. Hill, Lee Hills, Lisa Hisel, Heather Hoell, Lannie Hoglund, Louisa Hollman,

Roberta A. Houston, Lois A. Howlin, M. E. Huggins, Mary Hunter, Ashley Hunter, Linda M. Ingersoll, G. Jaffe, Margot and Deepak Jain, Margaret Jandl, Christie Johnson, Karen Johnson, Marlene Johnson, Carol Jones, Linda A. Joseph, Julie Karcis, Helen Kavanagh, Catherine Kehr, Anne M. Kelleher, Suzanna Wight Kelley, Peaches Kempner, Cookie Kerxton, Kristy Gertsen Keteltas, Iris Fabius Kiesling, Sarah J. Kilpatrick, Joyce Kirk, Steven F. Knell, Charlotte Koenigsaecker, Frank Konhaus, Yvette Kraft, Lynne S. Kraus, W. Bruce Krebs, Christina H. Kreutziger, Alice Kuzniak, Suzanne S. La Pierre, Wayne P. Lawson, PhD*, Elaine Leavenworth and David Phinney, Arlene Leis, Canice K. Levin, Bari R. and Keith D. Livingston, Michele Dandrea Lowell, Anne H. Magoun, Gary and Phoebe Mallard, Maggie Malloy, Nancy Maloney, Karen Komai Margolis, Maria Teresa Martínez, Anna Mastroianni, Jane McAllister, Laura McAuliffe, Mr. William McDonald, Lorraine M. McDonnell and M. Stephen Weatherford*, Tracy B. McGillivary, Gail McGinn, Sandy McKenzie, Iris McWilliams, Janet Meister, Rona Mendelsohn, Althea L. Miller, Gail Miller, Susan Miller and Kenneth Kendler, Donna Murasky, Carolynne Myall, Sondra and Morey Myers, Janice Mynchenberg, Robin and Jeremiah Nelson, Maryam Newman, Nancy Nolting, Caroline Hooff Norman, Betty Nordwind, Madeline and Allan Olson, Marcia Benbow O'Neal, Donna Orgeron, Mary Orr, Susan Page, Lawley Paisley-Jones and Kathy Peyman, Shirley Parks, Judson Parsons and Diana Gardener, Cynthia Paschen, Veena Peediyyakkal, Patricia Pelizzari, Mary Ann Pemberton, Marta M. Pereyma, Suzanne Perkins-Gordon, Molly Peter, Jeanette Petite and Michael James* Petite, Francine H. Phillips, Esq., Elicia M. Pierno, Annette L. Polan, J. A. Pollard, Deborah Porter, Jackie Radford, Marigold Randall, Isabel Rauch, Janis S. Reed, Sara Reichard, Ann Rhodes, H. F. Richardson, Bettye Robertson, Diane C. Robertson, Janessa Robinson, Frances Anne Root, Gary Roper, Jane Rosenbaum, Barbara Rosenberg, Esther Rosenthal, Anya Royce, Maria E. Rubio, Stephanie Russo, Nancy Saathoff, Michele Saither,

Irene and Lawrence S. Schaffner, Karen Schwartz, Margaret Scott, Thomas P. Sculco, William R. Seabrook, Gregory Shaw, Pamela and Tom Sheffield, Helen Joan Shepard, Marjorie Sherwin and Rose Walton, Dianna Shomaker, Laurie Sieminski, Pamela Simontone, Gene M. Smith and Rachel Atcheson, Jane B. Smith, Walter R. Smith, Linda D. Spanier, Mary Speyer, Laura Stack, Sharon Stayin, Pegge M. Steele, Joan and Edward Stemmler, Maryan F. Stephens, Patricia M. Strickland, Patricia Sylvester, Jan Talley and Robin Talley Vaughn, Nancy E. Tate, Ellen Taubman, Alethea Taylor, Sarah Shell Teague, Linda J. Thompson, Rosa Ines Vera and Joseph Carey, Loraine Vitellozzi and Richard Ireland, Anne L. von Rosenberg, Melanie E. Vracas, Sarah Vradenburg, Alison Wachstein, Courtney Walker, Laurie Ann Weckel, Nancy L. Weiss, Richard Werling, Debbie West, Ann Renee Wingate, Regina Bilotta Witkin, Margaret K. Wolf, Judy Wolgast, Edith Wyss, Mary Zaks, David Zeller, Annmarie Zimmerman

NMWA strives to ensure the accuracy of donor information. We apologize for any errors or omissions. Contact 866-875-4627 with changes or questions.

WILHELMINA AND WALLACE HOLLADAY LEGACY SOCIETY

We extend sincere thanks to the following donors, who have informed the museum of their commitment to support NMWA through planned giving. The Wilhelmina and Wallace Holladay Legacy Society recognizes our founders as well as dedicated friends who ensure that NMWA's mission will thrive for generations. Donors whose planned gifts are designated for the Legacy of Women in the Arts Endowment are listed separately on page 30 and for the Space to Soar capital campaign on page 26.

Anonymous (55), Marlene J. Adrian* and Denise R. Duarte, Susan Aitcheson and Michael Guertin, Sunny Alsup, Alyssa H. Arute, Renée Bash, Ms. Kimberley L. Boyd, Marilyn Brendel Brooks, Beth B. Buehlmann, Jan S. Carr, Shelley Carton, Diana S. Dean-Spurgeon, Sara Jo Victors Dew, Kenneth P. Dutter,

Margaret Dzwilewski, Sylvia B. Fatzler, Lisa Claudy Fleischman*, Michele Garside, PhD, Deborah Porter Glenn, Barbara Gurwitz and William Hall, Ms. Alice Haddix, Margaret Hayes, Tamora Ilasat, Jan Jessup, Suzanne Johnson, Alice D. Kaplan, Florence Katz, Charleen Kavleski, Rita Marie Kepner, PhD & John Matthiesen in memory of Lisa T. Painter, Cynthia L. Korte, Stuart and Barbara Kreisberg, Sally G. Lefter, Debra Light, Judith A. Lindquist, Marcia MacArthur, Melody Marks, Janet Meister, Mme. Gail B. Meyers, Kristine Morris, Marcia Morse, Diane E. Mularz*, Nancy Ann Neal, Yvonne S. Olson, Jill W. Over, Cathy and Bill Pastor, Roseanne Marie Peters, Joyce D. Portnoy*, Mary H. Railsback* and Joel L. Ekstrom*, Hedy M. Ratner, Markley Roberts in memory of Jeanne Addison Roberts, Synthia Saint James, Michelle and Jonathan Sales, Christopher S. Sargent, Lois Shelton, Syndi Ann Shollenberger, Sandra Sider, Linda Watkins Sorkin, Shirley A. Sparr, Carol A. Talbeck and Gale A. Townsley, Jessica Tava, Sandra Gleichman Thompson, In honor of Rose Marcus Tobey, Harriette Treloar, Barbara Burnett Vater, Gail Waechter* and Paula Mack, Harriet L. Warm, Mary Lee Wood, Margot Lurie Zimmerman

LEGACY OF WOMEN IN THE ARTS ENDOWMENT

Endowment Foundation Trustee (\$1 million+)

Anonymous, Betty B. and Rexford Detre*, Estate of Grace A. George, Wilhelmina C. and Wallace F. Holladay, Sr.*, Carol* and Climis Lascaris, Estate of Evelyn B. Metzger, The Honorable Mary V. Mochary, Rose Benté Lee Ostapenko*, The Madeleine Rast Charitable Remainder Trust, The Walton Family Foundation

Endowment Foundation Governor (\$500,000–\$999,999)

Noreen M. Ackerman, P. Frederick Albee and Barbara E. Albee*, Catherine L. and Arthur A. Bert, M.D., J.W. Kaempfer, Jr., Nelleke Langhout-Nix*, Joe R. and Teresa L.* Long, James R. and Suzanne S. Mellor, National Endowment for the Humanities, Drs. A. Jess and Ben Shenson*,

MaryRoss Taylor, Alice W. and Gordon T.* West, Jr.

Endowment Foundation Fellow (\$200,000–\$499,999)

Catharina B. and Livingston L. Biddle, Jr.*, Marcia and Frank* Carlucci Charitable Foundation, Costa del Sol Cruise, Kenneth P. Dutter, Estate of E. Louise Gaudet, Lorraine G. Grace*, William Randolph Hearst Foundation, Estate of Eleanor Heller, Fred M. Levin and Nancy Livingston*/The Shenson Foundation, in memory of Drs. Ben and A. Jess Shenson, Dorothy S. Lyddon*/Seven Springs Foundation, Marlene McArthur and Frederic V.* Malek, Victoria J. Mastrobuono*, Sea Goddess I and II Trips, Alejandra and Enrique Segura, Sheila and Richard Shaffer, Clarice Smith*, Elzbieta Chlopecka Vande Sande

Endowment Foundation Counselor (\$100,000–\$199,999)

Gina and Eugene Adams, Janice L. and Harold L. Adams, Nunda and Prakash Ambegaonkar, Carol C. Ballard, Baltic Cruise, Charlotte Clay Buxton, Eleanor and Nicholas D. Chabraja, Clark Charitable Foundation, Hilda and William B. Clayman, Julia B. and Michael M. Connors, Martha Lyn Dippell and Daniel Lynn Korengold, Gerry E. and S. Paul* Ehrlich, Jr., Enterprise Rent-A-Car, FedEx Corporation, The Geiger Family Foundation, Barbara A. Gurwitz and William D. Hall, Caroline Rose Hunt*/ The Sands Foundation, Cindy and Evan Jones, Alice D. Kaplan, Dorothy* and Raymond LeBlanc, Lucia Woods Lindley*, Gladys K. and James W. Lisanby*, Lockheed Martin Corporation, Adrienne B. and John F. Mars, Juliana E. May, Bonnie McElveen-Hunter, Irene Natividad, The Miller and Jeanette Nichols Foundation/Jeannette T. Nichols, Nancy O'Malley*, Lady Pearman, Reinsch Pierce Family Foundation/Lola C. Reinsch and J. Almont Pierce, Julia Sevilla Somoza, Marsha Brody Shiff, Ann Simmons*, June Speight*, Kathleen Elizabeth Springhorn, Mahinder K. and Sharad Tak, Sami and Annie Totah Family Foundation

Endowment Circle (\$50,000–\$99,999)

Linda Able Choice*, George* and Ursula Andreas, Arkansas Fifty, Lulu H. Auger*, Virginia Mitchell Bailey*, Sondra D. and Howard M.

Bender*/The Bender Foundation, Inc., Patti Cadby Birch*, Laura Lee and Jack S. Blanton, Sr.*/Scurlock Foundation, Anne R. Bord*, Caroline Boutté, BP Foundation, Inc., M. A. Ruda and Peter J. P. Brickfield*, Margaret C. Boyce Brown*, Martha Buchanan, Sandra and Miles Childers, Mary and Armeane Choksi, Donna Paolino Coia and Arthur Coia, Margaret and David Cole/The Cole Family Foundation, Holland H. Coors*, Porter and Lisa Dawson, Courtenay Eversole, Suzy Finesilver*/The Hertz and Suzy Finesilver Charitable Foundation, Karen Dixon Fuller*, Alan Glen Family Trust, Peter and Wendy Gowdey, Laura L. Guarisco, Jolynda H. and David M. Halinski, Janie Hathoot, Hap and Winton Holladay, I. Michael and Beth Kasser, William R. and Christine M. Leahy, Louise C. Mino Trust, Zoe H. and James H. Moshovitis, Joan and Lucio A. Noto, Marjorie H. and Philip Odeen, Nancy Bradford Ordway, Katherine D. Ortega, Margaret H. and Jim Perkins, Ramsay D. Potts*, in honor of Veronica R. Potts, Elizabeth Pruet*, Edward Rawson*, Jane S. Schwartz Trust, Jack and Dana* Snyder, Judith Zee Steinberg and Paul J. Hoenmans, Susan and Scott Sterling, Nancy N. and Roger Stevenson, Jr., Jo and Thomas Stribling, Susan and Jim Swartz, Elizabeth Stafford Hutchinson Endowed Internship—Texas State Committee of NMWA, Frances and William* Usher, Stuart and Chancy West, Betty Bentsen Winn and Susan Winn Lowry, Yeni Wong

Endowment Patron (\$25,000–\$49,999)

Micheline and Sean* Connery, Stephanie Fein, Sheila ffolliott, Georgia State Committee of NMWA, New York Trip, Mississippi State Committee of NMWA, Northern Trust, Estate of Mary Marvin, Breckinridge Patterson, Chris Petteys*, Lisa and Robert Pumphrey*, Elizabeth A. Sackler, Estate of Madoline W. Shreve, Patti Amanda and Bruce Spivey, Sahil Tak/ST Paper, LLC, in honor of Alice West, In honor of Alice West, Jean and Donald M. Wolf, The Women's Committee of NMWA

Endowment Sponsor (\$15,000–\$24,999)

Deborah G. Carstens, Martha and Homer Gudelsky*, Sally L. Jones, Louise H. Matthews Fund,

Lily Y. Tanaka, Liz and Jim Underhill, Elizabeth Welles, Dian Woodner

Endowment Friend (\$10,000–\$14,999)

Carol A. Anderson, Julia and George L. Argyros, Mrs. Joseph T. Beardwood, III, Catherine Bennett and Fred Frailey, Susan G. Berk, Mary Kay Blake, Booz Allen Hamilton, Lynne V. and Richard Cheney, Esther Coopersmith, Darby Foundation, Juliet De Laricheliere*, Jack J. Dreyfus, Jr.*, Patricia M. and Clifford J. Ehrlich, Mary Page and Thomas B. Evans, Lois Lehrman Grass*, Anna Stapleton Henson, Alexine C. and Aaron G. Jackson*, Jan Jessup, Pamela Johnson and Wesley King, Helga and Peter-Hans Keilbach, Howard and Michelle Kessler, Ellen U. and Alfred A. King*, Jacqueline Badger Mars, C. Raymond Marvin, Clyde and Pat Dean McCall, Edwina H. and Charles P. Milner*, Evelyn V. and Robert M. Moore*, Harriet Newbill, Estate of Edythe Bates Old, PepsiCo., Inc., Anne and Chris Reyes, Savannah Trip, Mary Anne B. Stewart, Paula Wallace/Savannah College of Art and Design, Marjorie Nohowel Wasilewski, Jean S. and Gordon T. Wells

* Deceased
(all lists as of October 15, 2024)

NATIONAL AND INTERNATIONAL OUTREACH COMMITTEES

NMWA's national and international outreach committees share the museum's mission and champion women artists in their regions. The museum has committees in the following locations, and we recognize the leaders of these groups for their special partnership.

U.S. Committees

Arizona
Shelley Cohn

Arkansas
MaryRoss Taylor

Colorado
Cecily Cullen

Georgia
Katie Johnson, Sara Steinfeld,
and Angela West

Greater Kansas City Area
Jan Leonard

Massachusetts
Sarah Bucknell Treco

Mid-Atlantic
Robyn Collins and Linda Mann

Mississippi
Nancy Anne Branton

New Mexico
Nancy Olson

New York
Regina Bilotta

Ohio
Donna Collins and Anu Mitra

Oregon
Elizabeth A. Leach

San Francisco
Lorna Meyer Calas and
Carol Parker

Southern California
Margaret Black and
Alexis Deutsch-Adler

Texas
Jean Alexander

Washington
Virginia Voorhees

Wyoming
Kristen Broeder and
Pamela Gibson

International Committees

Argentina
Florencia Helbling

Canada
Alexandra Lambert

Chile
Drina Rendic

France
Fabienne Flanigan-Ohl

Germany
Ann Simon

India
Minal Vazirani

Israel
Ifat Zamir and Yeala Hazut Yanuka

Ireland
Catherine Heaney
and Catherine Marshall

Italy
Claudia Pensotti Mosca

Japan
Noriko Kashiwagi and
Ayako Weissman

Peru
Consuelo Salinas de Pareja

South Korea
Hyun Jun Lim

Spain
Sofía Barroso

United Kingdom
Maria Bell-Salter and Susan Zimny

NMWA STAFF AND VOLUNTEERS

Museum Staff

Rebecca Ajtai, Elizabeth
Ajunwa, Elyssa Alexander,
Neda Amouzadeh, Marion
Anderson, Gregory Angelone,
Gabrielle Awuma, Pamela
Ayres, Catherine Bade, Michael

Barreto, Doug Beaver, Shazza
Berhan, Leila Bloomingdale,
Anthony Bowman, Kate Seno
Bradshaw, Dani Brogdon, Lori
Brubaker, Rebecca Bryant, Tina
Burke, Orlando Caicedo, Kirstin
Canner, Lindsay Canting, Traci
Christensen, Gala Cude, Julia
Cunningham, Kelley Daley,
Linda Day, Laura Devereux,
Grace DeWitt, Marilyn Dews,
Sarah Dunn, Falere Fagaroye,
Emma Filar, Shannon Gabriel,
Liliana Garcia, Deborah Gaston,
Adrienne L. Gayoso, Karina Gaytan
Rivera, Kina Gerald, Adja Gningue,
Alicia Gregory, Ilene Gutman,
Katie Guzman, Laguana Harley,
Knowles Harmon, Ashley W.
Harris, JeNaye Hawkins, Chloe
Hill, Laura Hoffman, Chamar
Holcomb, Quinshay Horsley,
Annie Hu, Andrew Hudson,
Carin Johnson, Helena Johnson,
Emma Kerr, Marin Kirk, Christina
Knowles, Micah Koppl, Celine
Krempp, Sydney Krieck, Maria
Lares, Holly Ludvigsen, Elizabeth
Lynch, Amy Mannarino, Martha
Manrique, Dominique Manuel,
Aaron McKeiver, Glenn McPhee,
Elizabeth Mondragon-Groff,
Spencer Morgan, Alisha Negron
Cruz, Gretchen Ortega, Seema
Osielski, Maria Pattison, Rhoni
Pavia, Mia Pehlivanlar, Alicia
Perkovich, Mai Pham, Meropi Plato,
Ellen Pollak, Rahmaan Rasheed,
Adriana Regalado, August
Renshaw, Ralph Richardson,

Herbert Richey, Courtney
Robinson, Danita Robinson,
Hannah Shambroom, Melissa
Sheinman, Jummy Siwajuola,
Mariana Sobrero, Rachel Stein,
Susan Fisher Sterling, Virginia
Treason, Gordon Umbarger, Paris
Valladares, Maria Belen Vizcaino,
Brayden Voelkel, Berkley Vollino,
Kathryn Wat, Madison Wentela,
Taylor Williams, Christina Wilson,
Ashli York, Maya Younes, Susan
Yun, Orin Zahra, Cheyenne
Zimmerman

Volunteers

Helen Anthony, Fay Arrington,
Sophie Barry, Jayne Beline, Susan
Borke, Sumana Chatterjee, Claire
Chu, Marilia Costa, Madeline
Delahan, Anne Dine, Kathy
Fearnside, Christine Fisher, Erin
Garland, Lucy Gregor, Stephen
Greenberg, Meghan Hanson,
Rashonda Harris, Marci Hodge,
Laura Hutson, Marissa Huttinger,
Emily Katz, Grace Knudsen, Olga
Kulyk, James Le, Brigid Leavy,
Andrew Lokay, René Maddox, Paige
Mason, Colli McKiernan, Emma
McMorran, Jazmin Mora, Sarah
Morgan, Arantza Murphy, Sandy
Parsons, Victoria Pfaff, Laura
Provan, Christina Reitz, Joe Rippin,
Shelley Sams, Elena Skiouris,
Yasmin Tasan, Patricia Tuohy,
Shannon Turkewitz, Lori Vitellozzi,
Mary Walter, Sarah Wampler,
Cindy Warshaw, Susan White,
Carol Wolchok, Katie Woodfin



NMWA staff cheer for the museum's reopening

PHOTO BY ELYSE COSGROVE/ASICO PHOTO